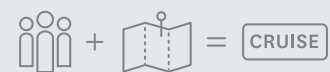


# 2019 Odyssey

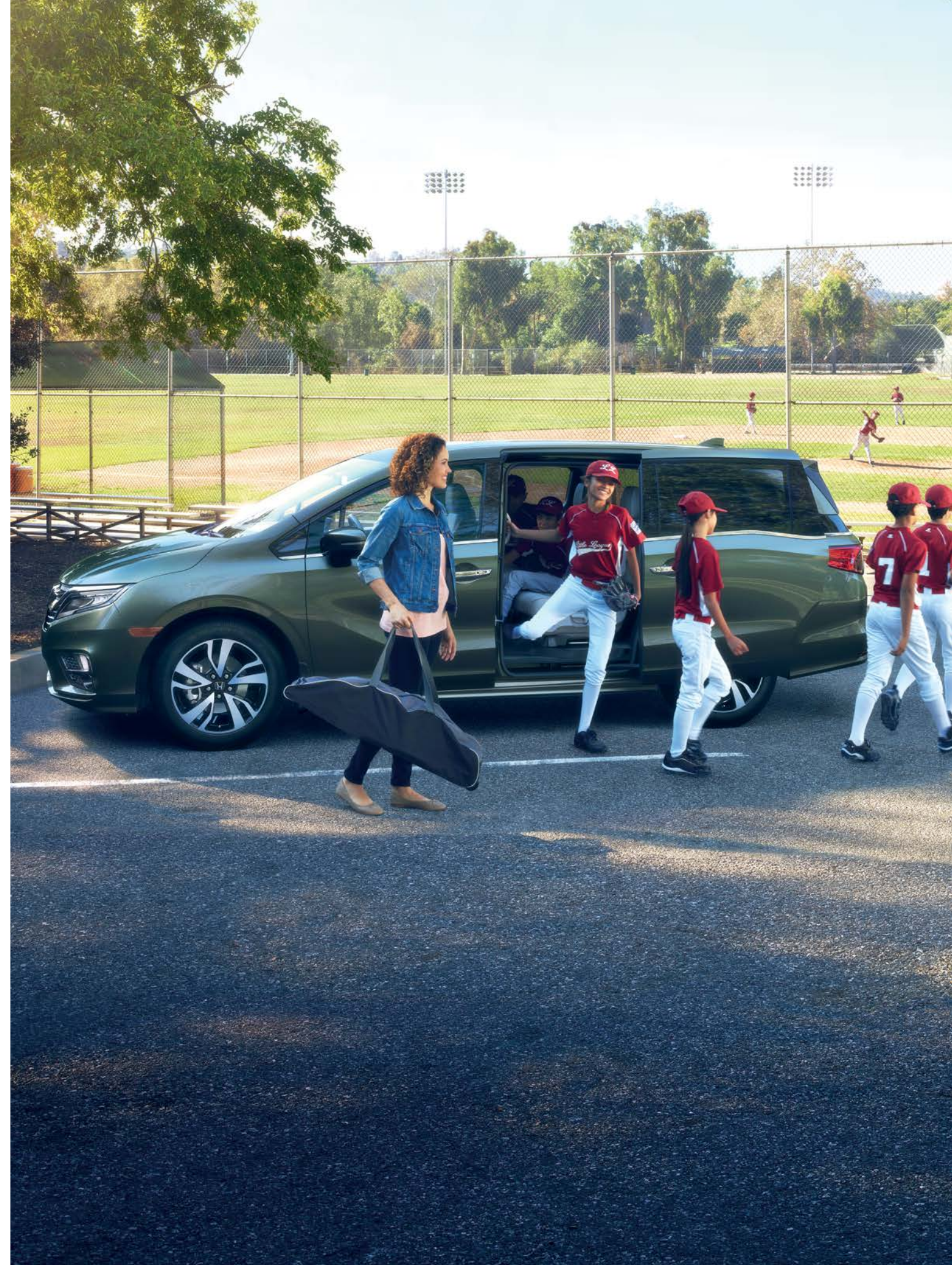


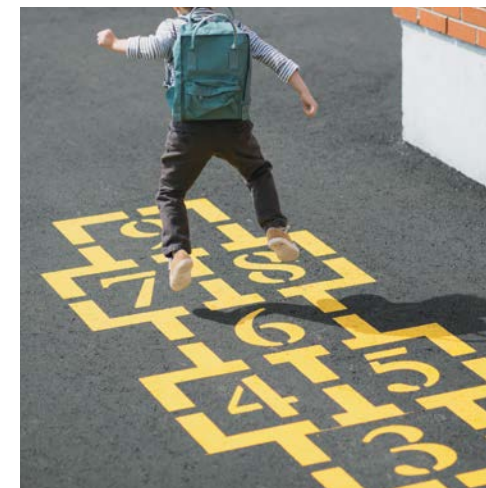


Whoever said life moves fast nailed it.  
One minute, they're crawling towards you.  
The next, they're running away.  
It's not you – it's just the way things go.  
Maybe it's best to kick things into cruise  
control, and enjoy as this journey unfolds.



- Overview 02
- Exterior / Styling 04
- Interior 06
- Versatility / Performance 08
- Entertainment / Technology 10
- HondaLink™ and Advanced Connectivity 12
- Honda Sensing™ Technologies 14
- Safety 16
- Accessories 20
- Colour and Trim 24
- Specifications 26
- Warranty 30
- The Power of Dreams 32





## Family ever after.

The 2019 Odyssey is here and it's mighty impressive. Loaded with innovative features and technologies, the Odyssey is your source for convenience, connectivity and tons of fun. With the versatile Magic Slide 2<sup>nd</sup>-Row Seats,<sup>™</sup> passenger accessibility and comfort is maximized. To keep everyone on board happy, the Odyssey impressively offers available AT&T Wi-Fi hotspot<sup>2,3</sup> and an available advanced Rear Entertainment System with streaming capability. With the available CabinWatch<sup>™</sup> and CabinTalk<sup>™</sup> features, it's easy to see and communicate with passengers in the rear seats. From information and entertainment to navigation and trip-enhancing convenience, this is one minivan that aims to impress you and any passengers on board.

1. None of the features we describe are intended to replace the driver's responsibility to exercise due care while driving. Drivers should not use handheld devices or operate certain vehicle features unless it is safe and legal to do so. Some features have technological limitations. For additional feature information, limitations and restrictions, please visit [www.honda.ca/disclaimers](http://www.honda.ca/disclaimers) and refer to the vehicle's Owner's Manual.  
2. Only compatible with certain devices and operating systems. Operation may be dependent upon: 1. GPS satellite signal reception and available cellular data and/or voice connection; or 2. connection to vehicle's built-in Wi-Fi hotspot, if applicable. Associated charges (incl. data plans, roaming charges or other amounts charged by your wireless carrier) may apply.  
3. New vehicles are equipped with a complimentary time or data trial period, whichever comes first. After the trial period, contact AT&T or visit [att.com/honda](http://att.com/honda) to purchase available data plans. 4G LTE connection speeds may vary by region.



Fold them down and pack it up. With rear split-folding seats, the Odyssey has the space to take cargo wherever you go.

## Up-to-date and up to the task.

The 2019 Odyssey is a perfect accessory for any family. It sports a sophisticated design with bold, available 19" aluminum-alloy wheels to match. Up front, the Odyssey shines bright with available LED daytime running lights, headlights and fog lights, with LED taillights at the rear. You can also enjoy hands-free convenience with available power sliding doors and an available hands-free power tailgate with programmable height. Late or early, you'll always arrive fashionably.

**Key features:** LED taillights, Available LED fog lights, Available 19" aluminum-alloy wheels, Available LED daytime running lights and available LED headlights, Available hands-free power tailgate with programmable height, Available power sliding doors





Messes won't mess with you. The available HondaVAC™ keeps your ride clean, no matter what the kids throw its way.



## A superior interior.

The versatile interior of the Odyssey is perfect for your unpredictable lifestyle. It comes standard with a proximity key entry system with pushbutton start and remote engine starter so you can quickly get on your way. Once inside, the standard 8-passenger seating and cavernous cargo room with plenty of storage prove this minivan is far from mini. And if the kids start to fight, don't fret. In the 2019 Odyssey, you can easily slide them apart with the Magic Slide 2<sup>nd</sup>-Row Seats™. These seats easily reconfigure for enhanced passenger comfort, cargo-hauling flexibility and easy access to third-row seating. In the back, simply pull on the seatback strap of the One-Motion 60/40 Split 3<sup>rd</sup>-Row Magic Seat® and it effortlessly folds away to create even more cargo space in seconds.

While the Magic Slide™ seats help keep the peace, the available HondaVAC™ helps keep your Odyssey looking clean. You'll love being in the driver's seat with standard heated front seats, and an available heated leather-wrapped steering wheel will help keep you cozy on cold mornings.



## Keep the kids well-adjusted.

Say hello to your new favourite seat. Well, besides the driver's seat, of course. The Magic Slide 2<sup>nd</sup>-Row Seats™ on the 2019 Odyssey enhance the cabin seating flexibility with four, easily reconfigurable modes to keep you and your passengers happy.



### Standard Seating

In Standard Seating Mode, with the centre seat in place, you can comfortably seat 8 passengers.

### Easy Access Mode

With the centre seat removed in Easy Access Mode, the outboard seats slide laterally through five selectable positions, allowing for easy access to the third row even with one or two rear-facing child seats installed in the second row.

### Buddy Mode

In Buddy Mode with the centre seat removed, you can put two passengers together and within easier reach of the front seats.

### Separation Mode

With the centre seat removed, Separation Mode allows the two outboard seats to slide to their outer-most positions.





## Check the tech.

Gone are the days of worrying what the kids are getting up to in the back rows. With available CabinWatch™, you can monitor the second row (even with a child in a rear facing car seat) and third row on the 8" centre display, both day and night. Get used to hearing "Are we there yet?" a lot less with the available Honda Blu-ray™ Rear Entertainment System with streaming capability, which will keep your passengers amused with the ceiling-mounted, 10.2" display. With the available CabinTalk™ feature, you can get everyone's attention by broadcasting your voice to the 2<sup>nd</sup>- and 3<sup>rd</sup>-row speakers and headphones.

The 2019 Odyssey is designed to make the guesswork outside of the vehicle a lot easier, too, with features like the available Blind Spot Information (BSI) system<sup>1</sup> with Rear Cross Traffic Monitor<sup>1</sup> system and the multi-angle rearview camera<sup>1</sup> with dynamic guidelines. From front to back, the 2019 Odyssey has stunning available tech to help keep everyone on board connected, in control, and happy.

**Key Features:** Apple CarPlay™<sup>2</sup>/Android Auto™<sup>2</sup>, Remote engine start, Available CabinWatch™ rear seat monitor, Available CabinTalk™ in-car PA, Available Display Audio System<sup>1</sup> with Honda Satellite-Linked Navigation System™<sup>3</sup>, Available wireless charging

1. None of the features we describe are intended to replace the driver's responsibility to exercise due care while driving. Drivers should not use handheld devices or operate certain vehicle features unless it is safe and legal to do so. Some features have technological limitations. For additional feature information, limitations and restrictions, please visit [www.honda.ca/disclaimers](http://www.honda.ca/disclaimers) and refer to the vehicle's Owner's Manual.  
 2. Only compatible with certain devices and operating systems. Operation may be dependent upon: 1. GPS satellite signal reception and available cellular data and/or voice connection; or 2. connection to vehicle's built-in Wi-Fi hotspot, if applicable. Associated charges (incl. data plans, roaming charges or other amounts charged by your wireless carrier) may apply.  
 3. Map database covers major metropolitan areas in Canada and the 48 contiguous U.S. states.



Multi-angle rearview camera<sup>1</sup> with dynamic guidelines



Available Honda LaneWatch™ blind spot display<sup>1</sup>



Available CabinWatch™ rear seat monitor



Available CabinTalk™ in-car PA



Available Blind Spot Information (BSI) system<sup>1</sup> with Rear Cross Traffic Monitor<sup>1</sup> system



Available Honda Rear Entertainment System

# Work those connections.

The Odyssey is just as tech-savvy as you. The available HondaLink™<sup>1,2,3</sup> helps connect you to a world of features both inside and outside of your vehicle, while other available apps and features are designed to entertain and inform.

## HondaLink™<sup>1,2,3</sup>



### Remote Start

Enjoy getting into a comfortable car with automatically adjusted climate control.



### Remote Door Lock/Unlock

Whether you're locked out or forgot to lock up, count on quick, keyless entry and remote assurance from almost anywhere.



### Geofence Alert

Get notified when your car enters or leaves a designated region.



### Stolen Vehicle Locator

Designed to help recover your stolen vehicle faster. The system uses sophisticated technology to assist the authorities with attempting to find your vehicle.



### Auto Collision Notification (ACN)

In the event of an accident, a response agent automatically checks in and helps send emergency care, even when passengers aren't able to respond.

## Advanced Connectivity



### AT&T Wi-Fi Hotspot

Connect up to 7 compatible devices with your vehicle's built-in Wi-Fi hotspot.<sup>2,4</sup> Enjoy up to 4G LTE speeds on multiple devices. From the open road, you'll be able to stream hours of videos, play games, get real-time email access and surf the web. You'll be able to stay connected up to 50 feet away from your Odyssey.



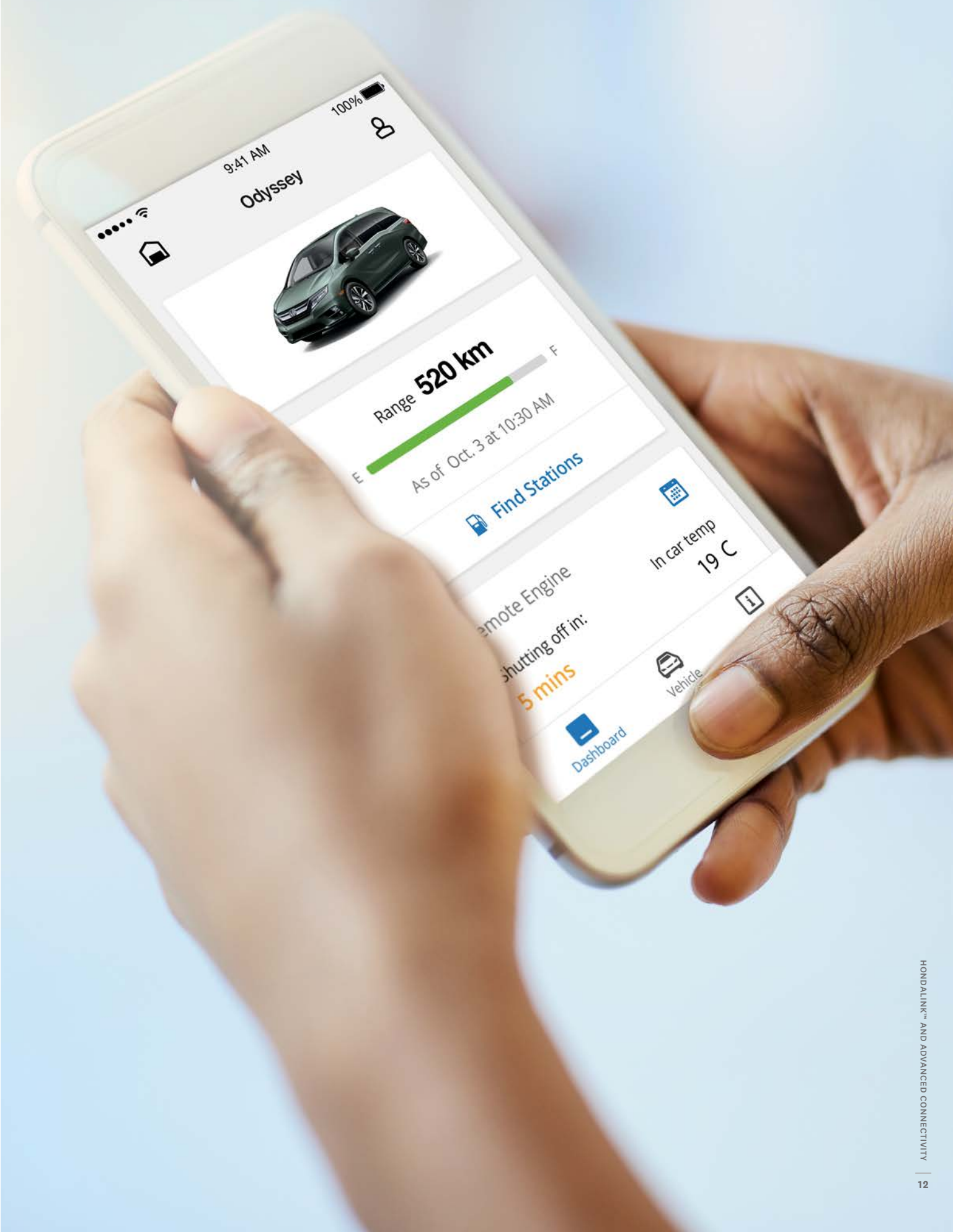
### CabinControl™ app

CabinControl™<sup>1,2</sup> gives everyone the opportunity to control the rear temperature, add music to a playlist and send an address to the available Honda Satellite-Linked Navigation System.<sup>7,15</sup>



### "How Much Farther?™" app

The available "How Much Farther?™" app<sup>5</sup> is a child-friendly navigation tracking App built in to the Rear Entertainment System. Using multiple background themes with animation, your passengers can track the trip's progress in a fun and interactive way.



1. None of the features we describe are intended to replace the driver's responsibility to exercise due care while driving. Drivers should not use handheld devices or operate certain vehicle features unless it is safe and legal to do so. Some features have technological limitations. For additional feature information, limitations and restrictions, please visit [www.honda.ca/disclaimers](http://www.honda.ca/disclaimers) and refer to the vehicle's Owner's Manual.  
2. Only compatible with certain devices and operating systems. Operation may be dependent upon: 1. GPS satellite signal reception and available cellular data and/or voice connection; or 2. connection to vehicle's built-in Wi-Fi hotspot, if applicable. Associated charges (incl. data plans, roaming charges or other amounts charged by your wireless carrier) may apply.  
3. Subscription to HondaLink™ services is required. HondaLink™-equipped vehicles come with complimentary time-limited trial subscriptions; fees, taxes and other charges will apply in order to continue subscription services upon trial expiry. The availability of certain GPS satellite and/or cellular networks is required for HondaLink™ to operate properly. Service interruptions may occur and/or vehicle system upgrades may be required if cellular network availability is compromised. Some restrictions may apply. For additional HondaLink™ information, please visit [www.honda.ca/hondalink](http://www.honda.ca/hondalink) and [www.honda.ca/privacy](http://www.honda.ca/privacy).  
4. New vehicles are equipped with a complimentary time or data trial period, whichever comes first. After the trial period, contact AT&T or visit [att.com/honda](http://att.com/honda) to purchase available data plans. 4G LTE connection speeds may vary by region.  
5. Map database covers major metropolitan areas in Canada and the 48 contiguous U.S. states.





## Your crystal ball on wheels.

Honda Sensing™ technologies are designed to help make your drive safer. With intuitive technology and design, we've created a way forward that we can all feel good about. Whether you're driving or sitting in the passenger seat, feel confident in the latest in safety innovation from Honda.



### Forward Collision Warning (FCW) system

The FCW system<sup>1</sup> is designed to detect the presence of vehicles in front of you and issue audible, visual and tactile alerts if you're approaching with too much speed. If you fail to respond, CMBS<sup>®</sup> is triggered into operation.



### Collision Mitigation Braking System™ (CMBS<sup>®</sup>)

To help reduce the likelihood or severity of a frontal impact, CMBS<sup>®</sup> is engineered to apply light brake pressure if you don't respond to FCW system alerts. If it still senses an imminent collision, CMBS<sup>®</sup> is designed to brake forcefully.



### Lane Departure Warning (LDW) system

The LDW system<sup>1</sup> is designed to monitor vehicle lane position and issue visual and tactile alerts if your vehicle drifts into another detected lane without signaling.



### Lane Keeping Assist System (LKAS)

The LKAS<sup>1</sup> is engineered to gently correct your steering if you begin to leave a detected lane without signaling, applying torque progressively to the steering to help guide you back to the centre of the lane.



### Road Departure Mitigation (RDM) system

The RDM system<sup>1</sup> is designed to help steer and even apply the brakes if it detects that your vehicle may leave the road.



### Adaptive Cruise Control (ACC)

The ACC system<sup>1</sup> is designed to keep a constant speed and set following interval behind a vehicle detected in front of you.

<sup>1</sup> None of the features we describe are intended to replace the driver's responsibility to exercise due care while driving. Drivers should not use handheld devices or operate certain vehicle features unless it is safe and legal to do so. Some features have technological limitations. For additional feature information, limitations and restrictions, please visit [www.honda.ca/disclaimers](http://www.honda.ca/disclaimers) and refer to the vehicle's Owner's Manual.

# Solid on safety.

At Honda, we strive to provide a high level of standard safety features to help ensure the safety of occupants, other drivers and even pedestrians. This added peace of mind helps our drivers maintain the confidence to enjoy every road to the fullest.

## Passive Safety

### Advanced Compatibility Engineering™ (ACE™) body structure

The highly innovative, next-generation Advanced Compatibility Engineering™ (ACE™) body structure is engineered to help disperse frontal impact energy to enhance occupant protection, while more effectively controlling it in a severe collision to help prevent intrusion into the passenger cabin.

### Child safety

Standard Lower Anchors and Tethers for Children (LATCH) offer three secure childseat restraint positions in the second row, while the third row has two positions. The Odyssey also features childproof rear sliding door locks.

### Pedestrian safety

Innovative pedestrian safety features include an energy-absorbing hood and front fenders and deformable wiper pivots.

### Seat belt safety

The Odyssey helps prepare you for the unexpected with 3-point height-adjustable front seat belts with an automatic tensioning system, and 3-point rear seat belts in the second and third rows.

### Eight standard airbags

The cabin of the Odyssey contains eight standard airbags. It features an i-SRS front airbag system, knee airbags and three-row side curtain airbags with a rollover sensor system designed to deploy if a rollover is detected. Plus, it has SmartVent™ side airbags, which are designed to deploy safely in a manner that mitigates the risk of injury to out-of-position or smaller occupants.

### Solid frame structure

Like all Honda trucks, the Odyssey is built with a rigid unit-body frame for added strength, stability and vehicle handling.



## Active Safety

### Controlled Braking

To assist with safe stopping, the 4-wheel Anti-lock Braking System<sup>1</sup> (ABS) is designed to help you maintain control under hard braking conditions, while Electronic Brakeforce Distribution (EBD) helps to optimize braking power based on weight distribution inside the vehicle. In addition, Brake Assist is engineered to help improve braking performance by applying brake pressure when a panic stop is detected.

### Vehicle Stability Assist (VSA®) with Traction Control

Vehicle Stability Assist<sup>1</sup> is designed to sense and help correct oversteer and understeer scenarios to enhance handling and cornering stability, while Traction Control is designed to minimize wheel spin when accelerating on loose or slippery surfaces, helping to inspire greater driver confidence.

### Tire Pressure Monitor System (TPMS)

To promote enhanced safety and fuel efficiency, the Tire Pressure Monitoring System<sup>2</sup> continually checks the air pressure in each tire. If pressure drops in any tire, the driver receives a dashboard alert.

### Hill Start Assist<sup>1</sup>

If you take your foot off the brake when stopped on an incline, this feature is engineered to temporarily maintain brake pressure to help prevent your Odyssey from starting to roll backwards.

### Auto high beam<sup>1</sup>

The auto high beam feature automatically changes the low beam headlights to high beam headlights in certain circumstances to help improve your vision.

1. None of the features we describe are intended to replace the driver's responsibility to exercise due care while driving. Drivers should not use handheld devices or operate certain vehicle features unless it is safe and legal to do so. Some features have technological limitations. For additional feature information, limitations and restrictions, please visit [www.honda.ca/disclaimers](http://www.honda.ca/disclaimers) and refer to the vehicle's Owner's Manual.  
2. For optimal tire wear and performance, the pressure should be checked regularly with a tire gauge. Do not rely solely on the monitor system.

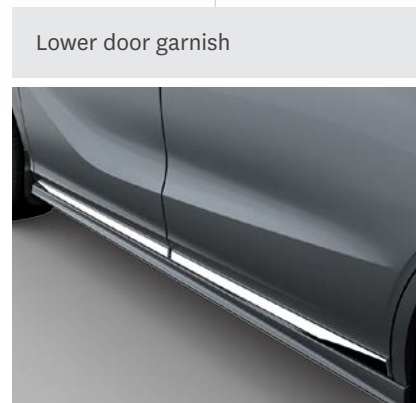
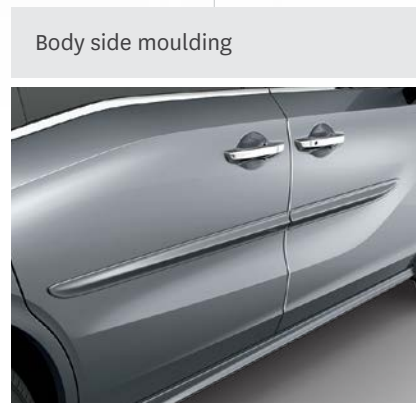
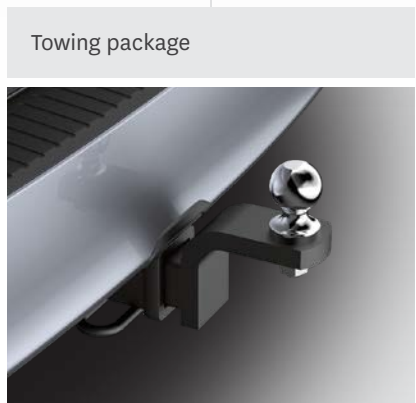
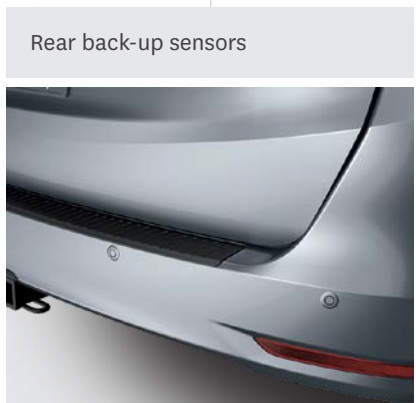
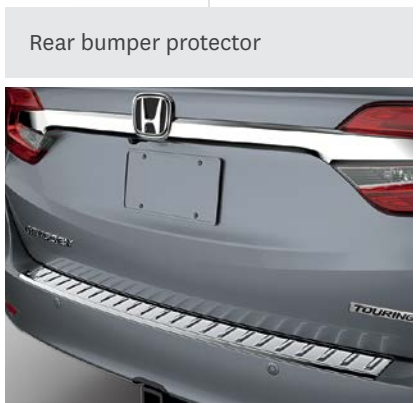
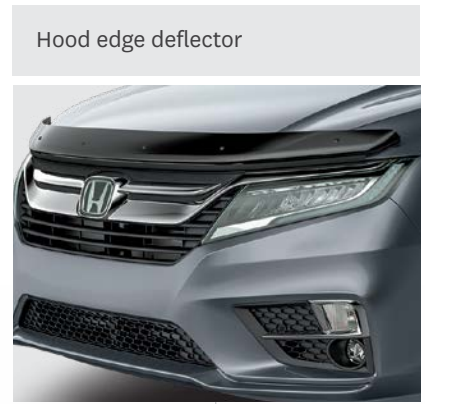
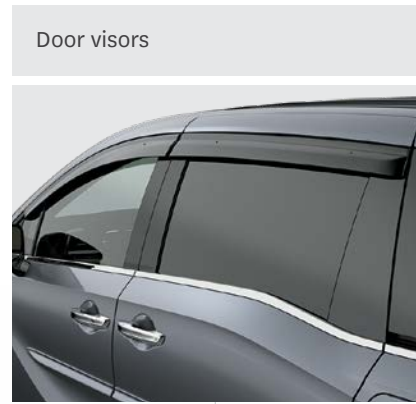
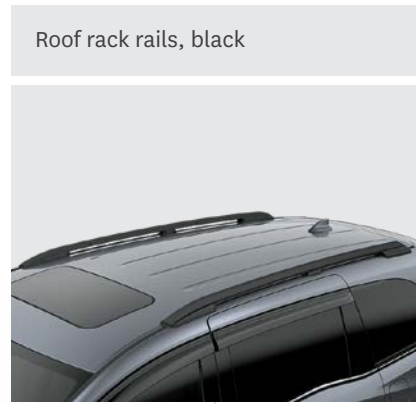


## Make it your Honda.

With countless customizable accessories and configurations, let the Odyssey show off what you're all about.



Give common sense  
some fashion sense.



**Other Accessories Available**

- 19" Alloy wheel
- Roof rack rails, chrome
- Moonroof visor
- Rear splash guards
- Roof rack box attachments
- Tailgate kick sensor

Accessories and packages are subject to inventory availability.

Take pride in your ride.

Heated steering wheel



Rear seat cover, 2nd row



Cargo net



Cargo liner



Ambient lighting



Wireless charger



Door sill trim, illuminated



Cargo bin, custom fit



Cargo tray, folding



**Other Accessories Available**

- All-season floor mats
- Cargo tray
- Illuminated door sill kit
- Rear seat cover, 3rd row

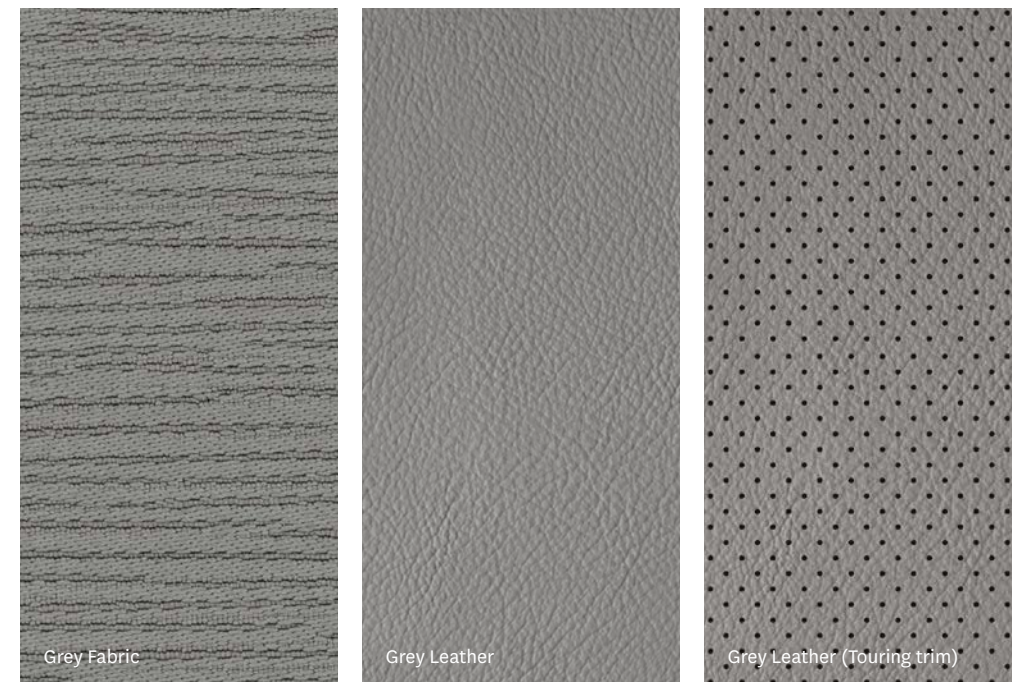
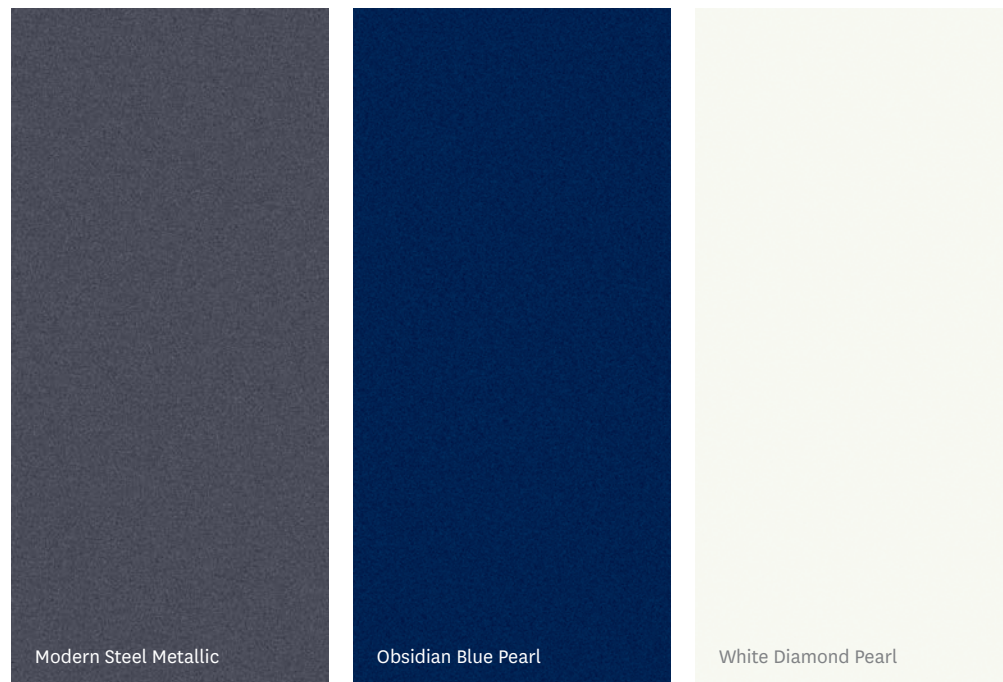
Accessories and packages are subject to inventory availability.

# Colour & Trim

When it comes to your Honda, we keep the options wide open. From the impressive range of exterior colours to the refined leather or fabric interior options, achieving the perfect balance for your Honda is easier than ever.

ODYSSEY	LX	EX	EX-RES	EX-L RES	EX-L NAVI	TOURING
Crystal Black Pearl	Brown Fabric	Brown Fabric	Brown Fabric	Brown Leather	Brown Leather	Brown Leather*
Deep Scarlet Pearl						Grey Leather*
Forest Mist Metallic						Beige Leather*
Lunar Silver Metallic		Brown Fabric	Brown Fabric	Brown Leather	Brown Leather	Grey Leather*
Modern Steel Metallic	Grey Fabric	Grey Fabric	Grey Fabric	Grey Leather	Grey Leather	Grey Leather*
Obsidian Blue Pearl				Grey Leather	Grey Leather	Grey Leather*
White Diamond Pearl	Brown Fabric	Brown Fabric	Brown Fabric	Brown Leather	Brown Leather	Brown Leather*

\*Perforated



# Trims

## ODYSSEY LX

### KEY FEATURES:

- 280-hp<sup>1</sup>, 262 lb.-ft<sup>1</sup>, 3.5-litre, 24-valve, Direct Injection SOHC, i-VTEC<sup>®</sup> V6 engine
- 18" aluminum-alloy wheels
- 150-watt AM/FM/CD audio system with MP3/Windows Media<sup>®</sup> Audio playback capability and 7 speakers including subwoofer
- 4-wheel Anti-lock Braking System<sup>2</sup> (ABS), Brake Assist and Electronic Brake-force Distribution (EBD)
- 8-passenger seating with Magic Slide 2nd-Row Seats<sup>™</sup> and One-Motion 60/40 Split 3rd-Row Magic Seat<sup>®</sup>
- 9-speed automatic transmission with Grade Logic Control
- Active shutter grille
- Apple CarPlay<sup>™2,3</sup> / Android Auto<sup>™2,3</sup>
- Auto high beam<sup>2</sup>
- Body-coloured heated power door mirrors
- Chrome door handles
- Display Audio System<sup>2</sup>
- Dual-zone automatic climate control system with air-filtration system
- Electronic Parking Brake (EPB) with automatic brake hold
- HandsFreeLink<sup>™</sup>-bilingual Bluetooth<sup>®</sup> wireless mobile phone interface<sup>2,3</sup>
- Heated driver's seat with 8-way power adjustment
- Heated front passenger's seat with 4-way power adjustment
- HondaLink<sup>™2,3,4</sup>
- Honda Sensing<sup>™</sup> Technologies
- LED taillights
- Lower Anchors and Tethers for Children (LATCH) x5
- Multi-angle rearview camera with dynamic guidelines<sup>2</sup>
- Next-Generation Advanced Compatibility Engineering<sup>™</sup> (ACE<sup>™</sup>) body structure
- Projector-beam halogen headlights with auto-on/off
- Proximity key entry system with pushbutton start and remote engine start
- Wi-Fi tethering<sup>2</sup>

## ODYSSEY EX

### ADDS TO OR REPLACES LX FEATURES

- 2nd-row armrest
- Auto-dimming rearview mirror
- Body-coloured heated power door mirrors with integrated turn indicators
- Fog lights
- Heated driver's seat with 12-way power adjustment including 4-way power lumbar support
- HomeLink<sup>®</sup> remote system<sup>5</sup>
- Honda LaneWatch<sup>™</sup> blind spot display<sup>2</sup>
- HondaVAC<sup>™</sup> in-car vacuum system
- Integrated 2nd-row sunshades
- LED daytime running lights
- Near field communication (NFC)
- One-touch power moonroof with tilt feature
- Power sliding doors
- Tri-zone automatic climate control with air-filtration system

## ODYSSEY EX-RES

### ADDS TO OR REPLACES EX FEATURES

- Advanced Rear Entertainment System with 10.2-inch, high-resolution WSVGA (1024x600) screen, Blu-ray<sup>™</sup> player and embedded streaming media apps
- CabinTalk<sup>™2</sup> in-car PA

## ODYSSEY EX-L RES

### ADDS TO OR REPLACES EX-RES FEATURES

- Acoustic windshield
- Body-coloured parking sensors (front/rear)
- Driver's seat position memory
- HD Radio<sup>™6</sup>
- Heated leather-wrapped steering wheel
- Leather-trimmed seating surfaces (front and outboard 2nd row)
- Memory-linked side mirrors with reverse gear tilt-down
- Power tailgate with programmable height
- SiriusXM<sup>™2,7</sup>

## ODYSSEY EX-L NAVI

### ADDS TO OR REPLACES EX-L RES FEATURES

- Display Audio System<sup>2</sup> with Honda Satellite-Linked Navigation System<sup>™2,2</sup> and bilingual Voice Recognition (replaces Advanced Rear Entertainment System) (EX-L Navi trim does not feature CabinTalk<sup>™2</sup>)

## ODYSSEY TOURING

### ADDS TO OR REPLACES EX-L NAVI FEATURES

- 19" aluminum-alloy wheels
- 10-speed automatic transmission with Grade Logic Control
- 550-watt AM/FM/CD audio system with MP3/Windows Media<sup>®</sup> Audio playback capability and 11 speakers including subwoofer
- Acoustic front and rear door glass
- Advanced Rear Entertainment System with 10.2-inch, high-resolution WSVGA (1024x600) screen, Blu-ray<sup>™</sup> player and embedded streaming media apps
- Ambient lighting (instrument panel, front door handles, footwell)
- AT&T Wi-Fi hotspot<sup>3,9</sup>
- Blind Spot Information (BSI) system<sup>2</sup> with Rear Cross Traffic Monitor<sup>2</sup> system (replaces Honda LaneWatch<sup>™</sup> blind spot display<sup>2</sup>)
- CabinTalk<sup>™2</sup> in-car PA
- CabinWatch<sup>™2</sup> rear seat monitor
- HondaLink<sup>™2,3,4</sup> Subscription Services
- "How much Farther?<sup>2™</sup>" app<sup>8</sup>
- Idle-stop
- LED fog lights
- LED headlights (High and low beam) with auto-on/off
- Power folding door mirrors with integrated turn indicators
- Power tailgate with programmable height with hands-free access
- Rain-sensing windshield wipers
- Ventilated front seats
- Wireless charging

ENGINE	LX	EX	EX-RES	EX-L RES	EX-L NAVI	TOURING
3.5-litre, 24-valve, Direct Injection, SOHC, i-VTEC <sup>®</sup> V6	•	•	•	•	•	•
Horsepower @ rpm <sup>1</sup>	280 @ 6000	280 @ 6000	280 @ 6000	280 @ 6000	280 @ 6000	280 @ 6000
Torque (lb.-ft. @ rpm) <sup>1</sup>	262 @ 4700	262 @ 4700	262 @ 4700	262 @ 4700	262 @ 4700	262 @ 4700
Displacement (cc)	3471	3471	3471	3471	3471	3471
Emissions rating	Tier 3 Bin 125	Tier 3 Bin 125	Tier 3 Bin 125	Tier 3 Bin 125	Tier 3 Bin 125	Tier 3 Bin 125
Bore and stroke (mm)	89 x 93	89 x 93	89 x 93	89 x 93	89 x 93	89 x 93
Compression ratio	11.5:1	11.5:1	11.5:1	11.5:1	11.5:1	11.5:1
Direct injection	•	•	•	•	•	•
Eco Assist <sup>™</sup> system	•	•	•	•	•	•
Idle-stop	•	•	•	•	•	•
Variable Cylinder Management <sup>®</sup> (VCM <sup>®</sup> )	•	•	•	•	•	•
Recommended fuel	Regular	Regular	Regular	Regular	Regular	Regular

DRIVETRAIN	LX	EX	EX-RES	EX-L RES	EX-L NAVI	TOURING
9-speed automatic transmission with Grade Logic Control	•	•	•	•	•	•
10-speed automatic transmission with Grade Logic Control	•	•	•	•	•	•
Steering wheel-mounted paddle shifters	•	•	•	•	•	•
Front-wheel drive (FWD)	•	•	•	•	•	•
ECON mode button	•	•	•	•	•	•
Snow mode	•	•	•	•	•	•
Towing capacity <sup>2</sup> (kg)	1360	1360	1360	1360	1360	1587

BODY/SUSPENSION/CHASSIS	LX	EX	EX-RES	EX-L RES	EX-L NAVI	TOURING
18" aluminum-alloy wheels	•	2-tone	2-tone	2-tone	2-tone	•
19" aluminum-alloy wheels	•	•	•	•	•	2-tone
All-season tires	P235/60 R18 103H	P235/60 R18 103H	P235/60 R18 103H	P235/60 R18 103H	P235/60 R18 103H	P235/55 R19 101H
Capless fueling system	•	•	•	•	•	•
Compact spare tire	•	•	•	•	•	•
Electric power-assisted rack-and-pinion steering (EPS)	•	•	•	•	•	•
Electronic Parking Brake (EPB) with automatic brake hold	•	•	•	•	•	•
MacPherson strut front suspension	•	•	•	•	•	•
Multi-link rear suspension with trailing arms	•	•	•	•	•	•
Power-assisted, ventilated front disc/solid rear disc brakes	•	•	•	•	•	•
Stabilizer bar – front/rear (mm)	26/20	26/20	26/20	26.5/20	26.5/20	26.5/20
Steering wheel turns, lock-to-lock	2.97	2.97	2.97	2.97	2.97	2.97

ACTIVE SAFETY	LX	EX	EX-RES	EX-L RES	EX-L NAVI	TOURING
4-wheel Anti-lock Braking System <sup>3</sup> (ABS)	•	•	•	•	•	•
Brake Assist	•	•	•	•	•	•
Electronic Brake-force Distribution (EBD)	•	•	•	•	•	•
Auto high beam <sup>3</sup>	•	•	•	•	•	•
Collision Mitigation Braking System <sup>™3</sup> (CMBS <sup>®</sup> ) (HS*)	•	•	•	•	•	•
Forward Collision Warning <sup>2</sup> (FCW) system (HS*)	•	•	•	•	•	•
Lane Departure Warning <sup>3</sup> (LDW) system (HS*)	•	•	•	•	•	•
Road Departure Mitigation <sup>3</sup> (RDM) system (HS*)	•	•	•	•	•	•
Hill Start Assist <sup>3</sup>	•	•	•	•	•	•
LED daytime running lights	•	•	•	•	•	•
Daytime running lights	•	•	•	•	•	•
Tire Pressure Monitoring System <sup>4</sup> (TPMS) with tire fill assist	•	•	•	•	•	•
Vehicle Stability Assist <sup>3</sup> (VSA <sup>®</sup> ) with Traction Control	•	•	•	•	•	•

HS\* = Feature is a component of the Honda Sensing<sup>™</sup> suite of safety and driver assist features.

PASSIVE SAFETY	LX	EX	EX-RES	EX-L RES	EX-L NAVI	TOURING
3-point rear seat belts	•	•	•	•	•	•
Front 3-point seat belts with automatic tensioning system	•	•	•	•	•	•
Next-Generation Advanced Compatibility Engineering <sup>™</sup> (ACE <sup>™</sup> ) body structure	•	•	•	•	•	•
Childproof rear door locks	•	•	•	•	•	•
HondaLink <sup>™</sup> Assist Automatic Emergency Response System <sup>3,5,6</sup>	•	•	•	•	•	•
i-SRS airbag system (front)	•	•	•	•	•	•
SmartVent <sup>™</sup> side airbags	•	•	•	•	•	•
Front knee airbags	•	•	•	•	•	•
Lower Anchors and Tethers for Children (LATCH)	5	5	5	5	5	5
Side curtain airbags with rollover sensor system	•	•	•	•	•	•

DRIVER ASSIST TECHNOLOGY	LX	EX	EX-RES	EX-L RES	EX-L NAVI	TOURING
Adaptive Cruise Control <sup>3</sup> (ACC) (HS*)	•	•	•	•	•	•
Blind Spot Information (BSI) system <sup>3</sup> with Rear Cross Traffic Monitor <sup>2</sup> system	•	•	•	•	•	•
Honda LaneWatch <sup>™</sup> blind spot display <sup>3</sup>	•	•	•	•	•	•
Lane Keeping Assist System <sup>3</sup> (LKAS) (HS*)	•	•	•	•	•	•

HS\* = Feature is a component of the Honda Sensing<sup>™</sup> suite of safety and driver assist features.

1. Horsepower and torque calculations reflect SAE net, Rev. 08/04, SAE J1349 procedures.

2. None of the features we describe are intended to replace the driver's responsibility to exercise due care while driving. Drivers should not use handheld devices or operate certain vehicle features unless it is safe and legal to do so. Some features have technological limitations. For additional feature information, limitations and restrictions, please visit [www.honda.ca/disclaimers](http://www.honda.ca/disclaimers) and refer to the vehicle's Owner's Manual.

3. Only compatible with certain devices and operating systems. Operation may be dependent upon: 1. GPS satellite signal reception and available cellular data and/or voice connection; or 2. connection to vehicle's built-in Wi-Fi hotspot, if applicable. Associated charges (incl. data plans, roaming charges or other amounts charged by your wireless carrier) may apply.

4. Subscription to HondaLink<sup>™</sup> services is required. HondaLink<sup>™</sup>-equipped vehicles come with complimentary time-limited trial subscriptions; fees, taxes and other charges will apply in order to continue subscription services upon trial expiry. The availability of certain GPS satellite and/or cellular networks is required for HondaLink<sup>™</sup> to operate properly. Service interruptions may occur and/or vehicle system upgrades may be required if cellular network availability is compromised. Some restrictions may apply. For additional HondaLink<sup>™</sup> information, please visit [www.honda.ca/hondalink](http://www.honda.ca/hondalink) and [www.honda.ca/privacy](http://www.honda.ca/privacy).

5. HomeLink<sup>®</sup> can be programmed with codes of up to three remote-control devices (e.g., garage-door opener, home security system, etc.). Additional control devices not provided by Honda may be required.

6. Coverage varies by market.

7. Only available in certain areas. Includes a no-charge trial of three months.

8. Map database covers major metropolitan areas in Canada and the 48 contiguous U.S. states.

9. New vehicles are equipped with a complimentary time or data trial period, whichever comes first. After the trial period, contact AT&T or visit [att.com/honda](http://att.com/honda) to purchase available data plans.

4G LTE connection speeds may vary by region.

EXTERIOR	LX	EX	EX-RES	EX-L RES	EX-L NAVI	TOURING
Acoustic windshield				•	•	•
Acoustic front and rear door glass						•
Active shutter grille	•	•	•	•	•	•
Body-coloured heated power door mirrors	•	With integrated turn signal indicators	With integrated turn signal indicators	With integrated turn signal indicators	With integrated turn signal indicators	With integrated turn signal indicators
Body-coloured parking sensors (front/rear)				•	•	•
Chrome door handles	•	•	•	•	•	•
Fog lights		•	•	•	•	LED
Front splash guards	•	•	•	•	•	•
Front wiper de-icer	•	•	•	•	•	•
Folding door mirrors	•	•	•	•	•	Power
Intermittent rear window wiper/washer	•	•	•	•	•	•
LED headlights (High and low beam)						With auto-on/off
LED taillights	•	•	•	•	•	•
Memory-linked side mirrors with reverse gear tilt-down				•	•	•
One-touch power moonroof with tilt feature		•	•	•	•	•
Power sliding doors		•	•	•	•	•
Power tailgate with programmable height				•	•	Hands-free access
Projector-beam halogen headlights	With auto-on/off	With auto-on/off	With auto-on/off	With auto-on/off	With auto-on/off	
Rain-sensing windshield wipers						•
Rear privacy glass	•	•	•	•	•	•
Rear roofline spoiler with integrated brakelight	•	•	•	•	•	Body-coloured
Rear window defroster	•	•	•	•	•	•
Variable intermittent windshield wipers	•	•	•	•	•	•
COMFORT & CONVENIENCE	LX	EX	EX-RES	EX-L RES	EX-L NAVI	TOURING
12-volt power outlets (Front: 1; cargo area: 1)	•	•	•	•	•	•
12-volt power outlet (3rd row)				•	•	•
115-volt power outlet, front			•	•		•
Ambient lighting (instrument panel, front door handles, footwell)						•
Auto-dimming rearview mirror		•	•	•	•	•
Beverage holders (15)	•	•	•	•	•	•
CabinTalk™ in-car PA			•	•	•	•
CabinWatch™ rear seat monitor						•
Centre console storage with utility tray	•	•	Illuminated	Illuminated	Illuminated	Illuminated
Conversation mirror with sunglasses holder	•	•	•	•	•	•
Display Audio System <sup>3</sup> with Honda Satellite-Linked Navigation System™ <sup>3,7</sup> and bilingual Voice Recognition					•	•
Door-pocket storage bins	•	•	•	•	•	•
Driver's and front passenger's illuminated vanity mirrors	•	•	•	•	•	•
Dual-zone automatic climate control with air-filtration system	•					
Exterior temperature indicator	•	•	•	•	•	•
Floor mats	1st/2nd row	1st/2nd/3rd row	1st/2nd/3rd row	1st/2nd/3rd row	1st/2nd/3rd row	1st/2nd/3rd row
Front bag hook	•	•	•	•	•	•
Front passenger's seatback pocket	•	•	•	•	•	•
HandsFreeLink™-bilingual Bluetooth® wireless mobile phone interface <sup>3,5</sup>	•	•	•	•	•	•
HomeLink® remote system <sup>8</sup>		•	•	•	•	•
HondaVAC™ in-car vacuum system		•	•	•	•	•
Immobilizer theft-deterrent system	•	•	•	•	•	•
Integrated 2nd-row sunshades		•	•	•	•	•
Integrated 3rd-row sunshades						•
Maintenance Minder™ system	•	•	•	•	•	•
Map lights	•	•	•	•	•	•
Multi-angle rearview camera <sup>9</sup> with dynamic guidelines	•	•	•	•	•	•
Near field communication (NFC)		•	•	•	•	•
One-touch turn signals	•	•	•	•	•	•
Power door locks	•	•	•	•	•	•
Power windows with auto-up/down	Front only	•	•	•	•	•
Proximity key entry system and pushbutton start	•	•	•	•	•	•
Rear air vents	•	•	•	•	•	•
Rear-seat heater ducts	•	•	•	•	•	•
Remote engine start	•	•	•	•	•	•
Seatback pockets (front-row)	Passenger-side	Passenger-side	•	•	•	•
Seatback pockets (front-row, upper)			•	•	•	•
Security system	•	•	•	•	•	•
Steering wheel-mounted controls (cruise control, audio, telephone and Multi-Information Display)		•	•	•	•	•
Tilt and telescopic steering column	•	•	•	•	•	•
Tri-zone automatic climate control with air-filtration system		•	•	•	•	•
Walk-away door lock	•	•	•	•	•	•
Wireless charging						•

SEATING & TRIM	LX	EX	EX-RES	EX-L RES	EX-L NAVI	TOURING
Driver's seat armrest	•	•	•	Adjustable	Adjustable	Adjustable
Passenger's seat armrest	•	•	•	•	•	Adjustable
2nd-row armrest		•	•	•	•	•
Driver's seat position memory				•	•	•
Driver's seat with 8-way power adjustment	•					
Driver's seat with 12-way power adjustment including 4-way power lumbar support		•	•	•	•	•
Front passenger's seat with 4-way power adjustment	•	•	•	•	•	•
Heated front seats	•	•	•	•	•	•
Heated leather-wrapped steering wheel				•	•	•
Magic Slide 2nd-Row Seats™	•	•	•	•	•	•
One-Motion 60/40 Split 3rd-Row Magic Seat®	•	•	•	•	•	•
Seating capacity	8	8	8	8	8	8
Ventilated front seats						•

ENTERTAINMENT	LX	EX	EX-RES	EX-L RES	EX-L NAVI	TOURING
150-watt AM/FM/CD audio system with MP3/Windows Media® Audio playback capability and 7 speakers including subwoofer	•	•	•	•	•	
550-watt AM/FM/CD audio system with MP3/Windows Media® Audio playback capability and 11 speakers including subwoofer						•
Bluetooth® Streaming Audio <sup>3,5</sup>	•	•	•	•	•	•
Apple CarPlay™ <sup>3,5</sup> / Android Auto™ <sup>3,5</sup>	•	•	•	•	•	•
Display Audio System <sup>3</sup>	•	•	•	•	Including Navigation <sup>3,7</sup>	Including Navigation <sup>3,7</sup>

Advanced Rear Entertainment System with 10.2-inch, high-resolution WSVGA (1024x600) screen, Blu-ray™ player and embedded streaming media apps			•	•		
HondaLink™ <sup>3,5,9</sup>	•	•	•	•	•	
HondaLink™ <sup>3,5,9</sup> Subscription Services						•
AT&T Wi-Fi hotspot <sup>5,10</sup>						•
"How much Farther?"™ app <sup>7</sup>						•
CabinControl™ app <sup>3,5</sup>	•	•	•	•	•	•
HD Radio™ <sup>11</sup>				•	•	•
USB device connector <sup>5</sup>	2	2	3	3	3	3
Siri Eyes Free compatibility <sup>3,5</sup>	•	•	•	•	•	•
Speed-sensitive Volume Control (SVC)	•	•	•	•	•	•
SiriusXM™ <sup>3,12</sup>				•	•	•
Wi-Fi tethering <sup>5</sup>	•	•	•	•	•	•

FUEL ECONOMY <sup>13</sup> (L/100 KM)	LX	EX	EX-RES	EX-L RES	EX-L NAVI	TOURING
9AT (City/Hwy/Combined)	12.6/8.4/10.7	12.6/8.4/10.7	12.6/8.4/10.7	12.6/8.4/10.7	12.6/8.4/10.7	
10AT (City/Hwy/Combined)						12.2/8.5/10.6

DIMENSIONS	LX	EX	EX-RES	EX-L RES	EX-L NAVI	TOURING
Cargo volume behind 1st row (L)	4103	3984	3984	3984	3984	3973
Cargo volume behind 2nd row (L)	2526	2452	2452	2452	2452	2452
Cargo volume behind 3rd row (L)	929	929	929	929	929	929
Curb weight (kg)	2004	2026	2040	2046	2038	2086
Fuel tank capacity (L)	73.8	73.8	73.8	73.8	73.8	73.8
Ground clearance (mm)	148	148	148	148	148	148
Headroom – front/2nd row design mode/3rd row (mm)	1035/1003/973	983/995/973	983/995/973	983/995/973	983/995/973	983/995/973
Height (mm)	1767	1767	1767	1767	1767	1767
Hip room – front/2nd row/3rd row (mm)	1488/1646/1229	1488/1646/1229	1488/1646/1229	1488/1646/1229	1488/1646/1229	1488/1646/1229
Legroom – front/2nd row/3rd row (mm)	1040/1038/967	1040/1038/967	1040/1038/967	1040/1038/967	1040/1038/967	1040/1038/967
Length (mm)	5161	5161	5161	5161	5161	5161
Passenger volume (L)	4633	4534	4534	4534	4534	4534
Shoulder room – front/2nd row/3rd row (mm)	1603/1564/1525	1603/1564/1525	1603/1564/1525	1603/1564/1525	1603/1564/1525	1603/1564/1525
Turning radius (m)	6.05	6.05	6.05	6.05	6.05	6.05
Wheelbase (mm)	3000	3000	3000	3000	3000	3000
Width – including mirrors/mirrors folded (mm)	2345/2110	2345/2110	2345/2110	2345/2110	2345/2110	2345/2110

- Horsepower and torque calculations reflect SAE net, Rev. 08/04, SAE J1349 procedures.
- With the required accessory towing package. See your Owner's Manual for proper towing operation.
- None of the features we describe are intended to replace the driver's responsibility to exercise due care while driving. Drivers should not use handheld devices or operate certain vehicle features unless it is safe and legal to do so. Some features have technological limitations. For additional feature information, limitations and restrictions, please visit [www.honda.ca/disclaimers](http://www.honda.ca/disclaimers) and refer to the vehicle's Owner's Manual.
- For optimal tire wear and performance, the pressure should be checked regularly with a tire gauge. Do not rely solely on the monitor system.
- Only compatible with certain devices and operating systems. Operation may be dependent upon: 1. GPS satellite signal reception and available cellular data and/or voice connection; or 2. connection to vehicle's built-in Wi-Fi hotspot, if applicable. Associated charges (incl. data plans, roaming charges or other amounts charged by your wireless carrier) may apply.
- Operation requires wireless mobile phone to be paired with the vehicle. Operation is dependent upon cellular data and/or voice connection availability and GPS satellite signal reception.
- Map database covers major metropolitan areas in Canada and the 48 contiguous U.S. states.
- HomeLink® can be programmed with codes of up to three remote-control devices (e.g., garage-door opener, home security system, etc.).
- Subscription to HondaLink™ services is required. HondaLink™-equipped vehicles come with complimentary time-limited trial subscriptions; fees, taxes and other charges will apply in order to continue subscription services upon trial expiry. The availability of certain GPS satellite and/or cellular networks is required for HondaLink™ to operate properly. Service interruptions may occur and/or vehicle system upgrades may be required if cellular network availability is compromised. Some restrictions may apply. For additional HondaLink™ information, please visit [www.honda.ca/hondalink](http://www.honda.ca/hondalink) and [www.honda.ca/privacy](http://www.honda.ca/privacy).
- New vehicles are equipped with a complimentary time or data trial period, whichever comes first. After the trial period, contact AT&T or visit [att.com/honda](http://att.com/honda) to purchase available data plans. 4G LTE connection speeds may vary by region.
- Coverage varies by market.
- Only available in certain areas. Includes a no-charge trial of three months.
- Estimated fuel consumption based on Government of Canada's 5-cycle testing method. Your actual fuel consumption will vary based on driving habits and other factors – use for comparison only. For more information on 5-cycle testing, visit <http://vehicles.nrcan.gc.ca>



**We're Here.** At Honda, assistance and support are always available. The team of trained technicians at your Honda dealership will help keep your vehicle in terrific shape. If you need more information or assistance relating to your warranty, call us at 1-888-9-HONDA-9. For all of the latest Honda information, including product specifications, pricing, photos and more, visit [honda.ca](http://honda.ca). It has everything you need to "design" your Honda and personalize it with items from a list of quality accessories.

**We're Ready to Help.** When you purchase a new Honda, you automatically receive Honda Plus Roadside Assistance. This service is available to you, or any authorized driver, 24 hours a day, 7 days a week, anywhere in Canada or the United States (including the lower 48 states, the District of Columbia, Alaska, Hawaii, and Puerto Rico). Coverage is for 3 years over an unlimited distance and includes a 24-hour toll-free Honda Plus Roadside Assistance number, mechanical breakdown towing, emergency roadside service and many other helpful features. Ask your dealer for more information.

**Honda Plus Extended Warranty.** Experience added protection with Honda Plus coverage that is behind you for the road ahead. With available coverage options of up to 8 years/200,000 km, you can choose the one that best suits your needs. With a plan this wide-ranging, the only thing that's uncertain is where it will take you.

**Honda Financial Services.** Whether you buy or lease a Honda, Honda Financial Services can assist you with the process. Ask your dealer which lease or purchase plan best suits your needs.

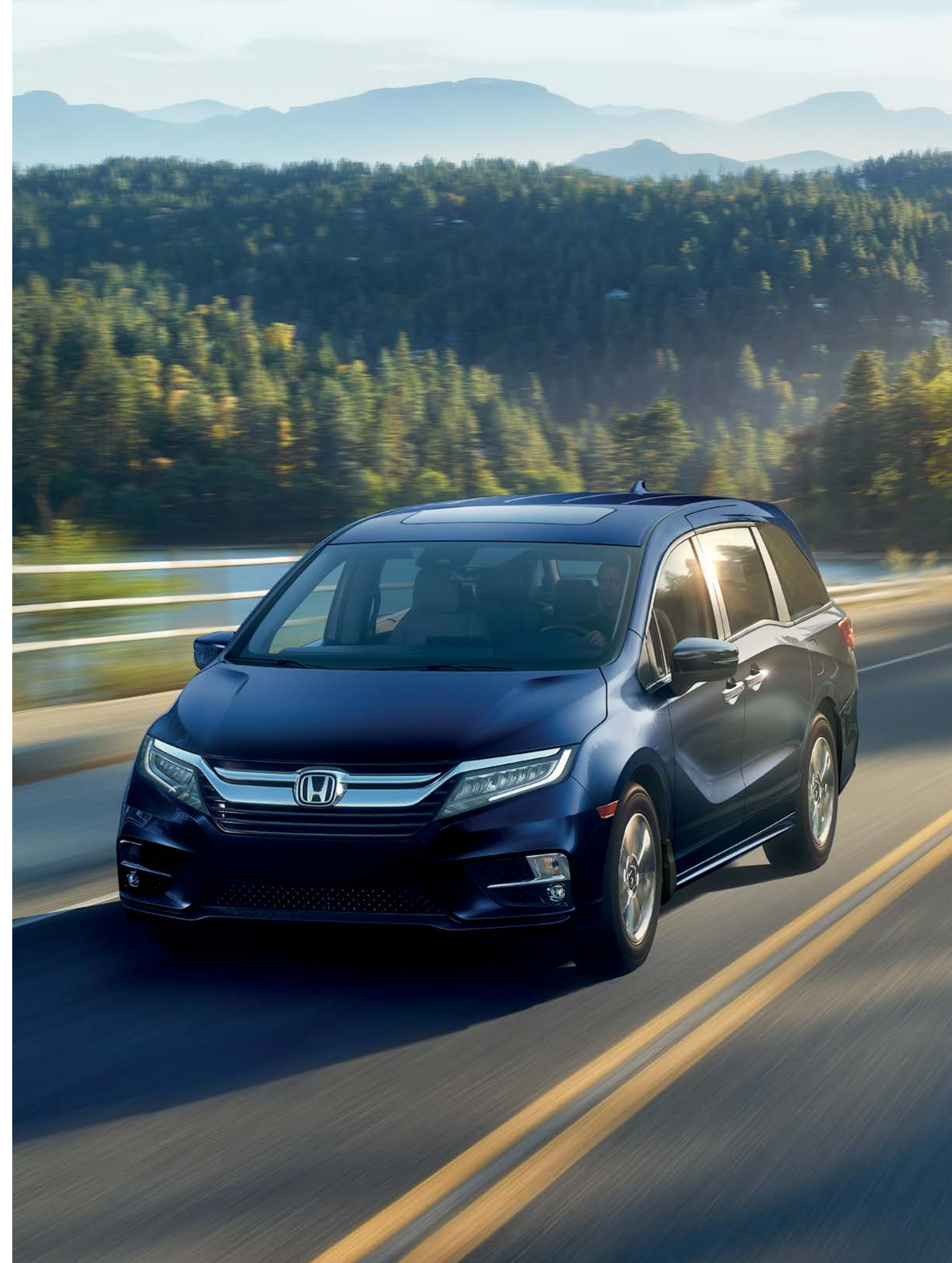
**New Honda Vehicle Warranty.** The Honda warranty protection makes Power Train components a minor concern with the Honda 5-year/100,000-km No Nonsense Warranty. In addition to the Honda 5-year/100,000-km No Nonsense Warranty, you and your new Honda are protected by a Honda 3-year/60,000-km Distributor's Warranty as well as an additional series of warranties for such items as emission controls, body corrosion and more.

**Genuine Honda Accessories** give you the opportunity to fine-tune your new Honda just how you like it. Whether you want to turn up the style, the versatility or the exclusivity, every accessory is designed and built to adhere to the strictest Honda standards. See your dealer for full details.

**Genuine Honda Replacement Parts** are made to the same exacting standards as original Honda components and are guaranteed by the Genuine Honda Parts Warranty. Using Genuine Honda Parts will help to maintain the quality, reliability and performance of your vehicle.

**Always use seat belts and appropriate child seats. Children 12 and under are safest when properly restrained in a rear seat. Properly secure all items stored in cargo areas. Always read the vehicle owner's manual for detailed vehicle operation and feature information.**

Honda reserves the right to terminate or change any of the services and/or features listed in this brochure at any time, for any reason. Some features require registration. Certain features may transmit to Honda and/or other service providers a vehicle's location, operating conditions or other information that may be tied to the vehicle identification number (VIN) and can be combined to track a vehicle. For Honda's data use and Privacy Policies, see [www.honda.ca/privacy](http://www.honda.ca/privacy). Specifications, features, illustrations and equipment shown in this brochure are based upon the latest available information at the time of publication. Although descriptions are believed to be correct, accuracy cannot be guaranteed. Honda reserves the right to make changes at any time, without notice or obligation, in colours, specifications, accessories, materials, models and trim availability. Some vehicles may be shown with optional equipment. Some vehicles shown may be U.S. models. Canadian specifications may vary. For Android Auto™ data use and privacy policy, see Terms and Privacy Policy for Android Auto™ app or contact Google Inc. at [www.google.com](http://www.google.com). Android Auto is a trademark of Google Inc. For Apple CarPlay™ data use and privacy policy, see Terms and Privacy Policy for Apple CarPlay™ or contact Apple Inc. at [www.apple.com](http://www.apple.com). Apple CarPlay, Siri and iPhone are trademarks of Apple Inc., registered in the U.S. and other countries. Bluetooth is a registered trademark of SIG Inc. Blu-ray is a trademark of Blu-ray Disc Association. HomeLink and HandsFreeLink are registered trademarks or trademarks of Johnson Controls Technology. HD Radio™ is a proprietary trademark of iBiquity Digital Corp. HDMI is a registered trademark of HDMI Licensing LLC. Windows Media is a registered trademark of Microsoft Corporation. LEED® is a registered trademark of the U.S. Green Building Council, licensed to the Canada Green Building Council for use in Canada. © 2018 Sirius XM Canada Inc. "SiriusXM", the SiriusXM logo, channel names and logos are trademarks of SiriusXM Radio Inc. and are used under licence. Honda and all other marks used herein are trademarks or registered trademarks of Honda Motor Co., Ltd. Honda Canada Inc., 180 Honda Boulevard, Markham, ON, Canada L6C 0H9. 1-888-9-HONDA-9. [www.honda.ca](http://www.honda.ca).



# Here's to the dreamers.

## The Power of Dreams

At Honda, The Power of Dreams drives us to create intelligent products that enhance mobility and increase the joy in people's lives. It is the mindset that guides us to help move people forward and protect the future we all share.

How do we do it? We never stop dreaming. In the 70s, we were the first automaker in the industry to voluntarily adhere to emissions standards. Now, we're advancing robotics and aviation, harnessing solar power and releasing a car that emits only water.

Through it all, our goal never changes: create a safer, smarter world in which people experience the joy of mobility.

## The Honda Canada Foundation

The Honda Canada Foundation enables the realization of dreams by supporting people and organizations across the country that focus on four pillars: Family, Education, Environment and Engineering. Since 2005, more than 5.5 million Canadians have benefited from charitable programs funded by the Honda Canada Foundation.

## Blue Skies for Our Children

We believe everything we do must exist in harmony with nature. That's where "Blue Skies for Our Children" was born. It's more than a mantra – it's an environmental pledge to the Earth and our future generations. And we're practicing what we preach.

## Leading the LEED® certifications

Our sales offices also strive for environmental efficiencies. Honda's LEED® (Leadership in Energy and Environmental Design) Gold Certified Head Office campus in Markham, Ontario, includes green features such as a storm water management system, heat-reflective materials

on the roof and bio swales for natural filtration. The facility uses 89 percent less litres of water per square foot and 38 percent less kilowatt hours of energy annually than the average office facility.

## Zero Waste-to-Landfill

We don't waste time. Or anything else for that matter. Our goal is to increase our recycling efforts, reduce overall waste and divert materials from landfill sites. In fact, last year we sent less than one percent of waste to landfills from our office and parts distribution facilities combined.

## One Honda. One Tree.

We're pretty obsessed with fresh air. For every lawn and garden or ATV product sold between April 1 and July 31 annually, the Honda Canada Foundation plants one tree. In the last 12 years, we've helped plant more than 160,000 trees in Canada.

## Environmental Vehicles & Technology

Blending style, efficiency and a serious amount of thrill, the Accord Hybrid makes environmental responsibility feel almost rebellious. Combining a lithium-ion battery with a 2.0-litre engine, this Hybrid lets you go more and stop less on the way. The Honda Insight sets a new standard of hybrid efficiency, powered by a 1.5-litre Atkinson Cycle engine, electric motor and lithium-ion battery. And the future looks brighter with Honda advancing Fuel Cell technology that emits zero emissions.

## Honda Clarity Plug-in Hybrid

Whoever said an eco-conscience came with compromise was sorely mistaken. This advanced plug-in hybrid vehicle lets you tap into electric power alongside the gas engine to create extra efficiency.



HondaJet



Motorcycles



Side By Side



ASIMO



Honda Campus



Marine



Power Equipment



ATVs



Blue Skies for Our Children

