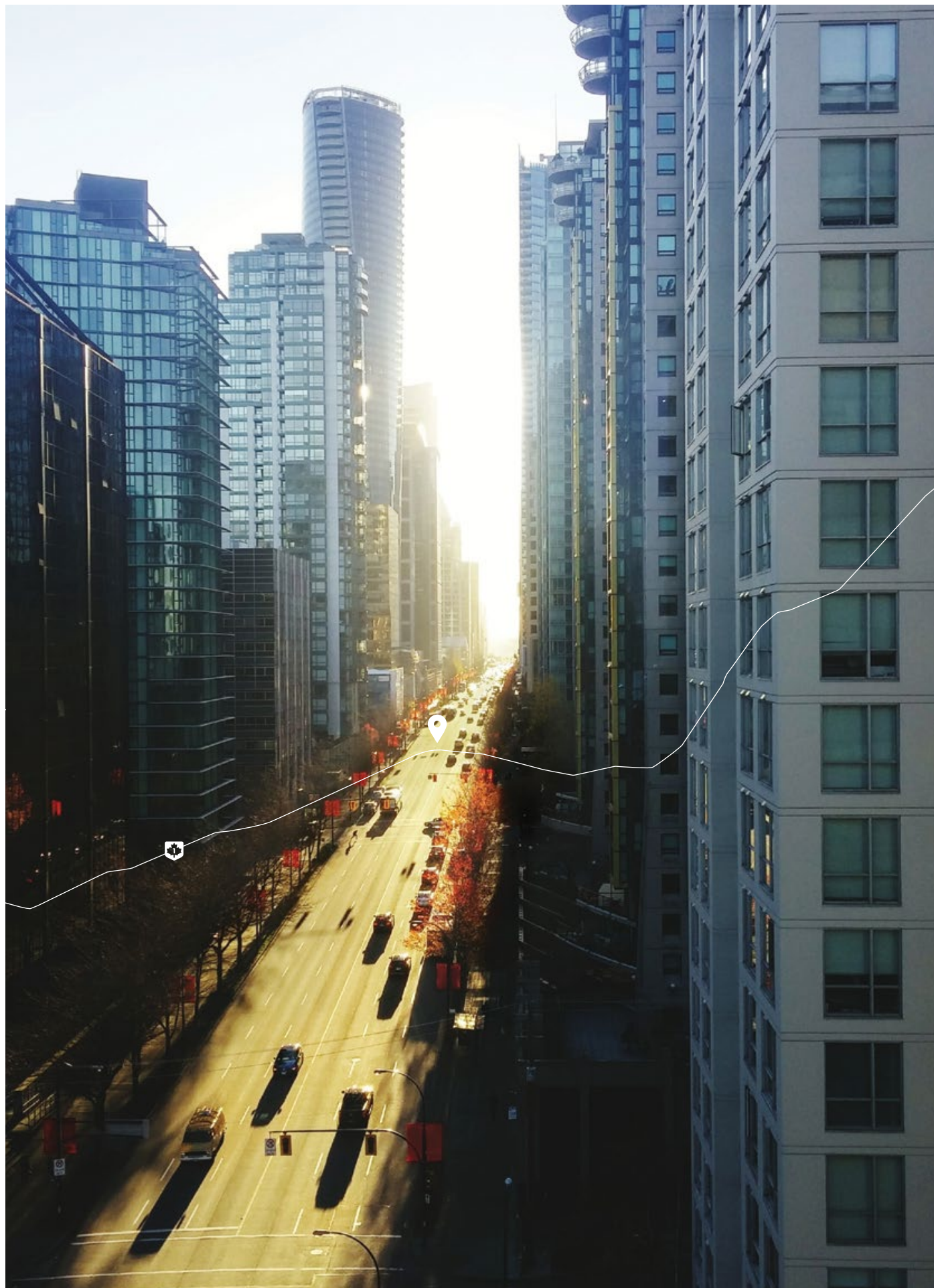


2017 Civic





There's no membership card for Civic Nation. You just need to go with the flow and roll with the punches. One night, it's a fancy dinner with way too many forks. Next night, it's microwave popcorn on the couch. Sometimes, you're hitting the gym at 5am. Others, you're hitting the snooze button over and over and over. There are so many roads in Civic Nation. Be sure to drive them all.

Overview 01

Sedan 03

Coupe 05

Interior 07

Performance & Efficiency 09

Hatchback 11

Technology 17

Honda Sensing™ Technologies 19

Safety 21

Accessories 22

The Power of Dreams 27

Warranty 29

Specs 30-36

Colours & Trims 37



Accessorized model shown.



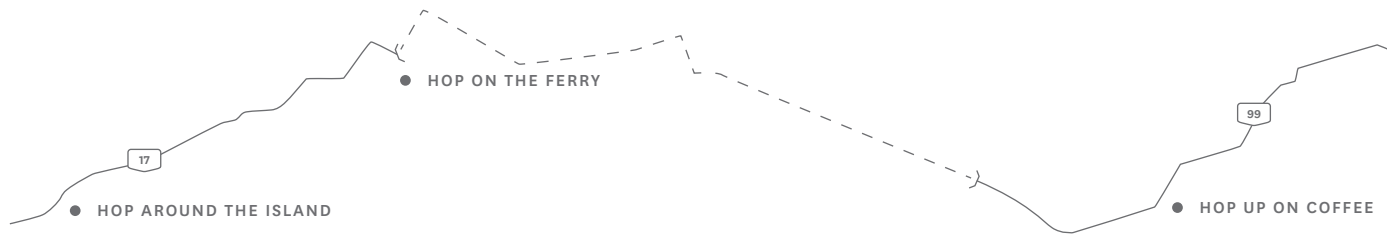
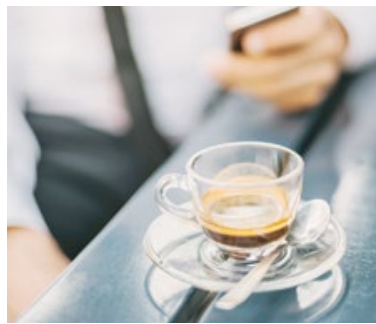
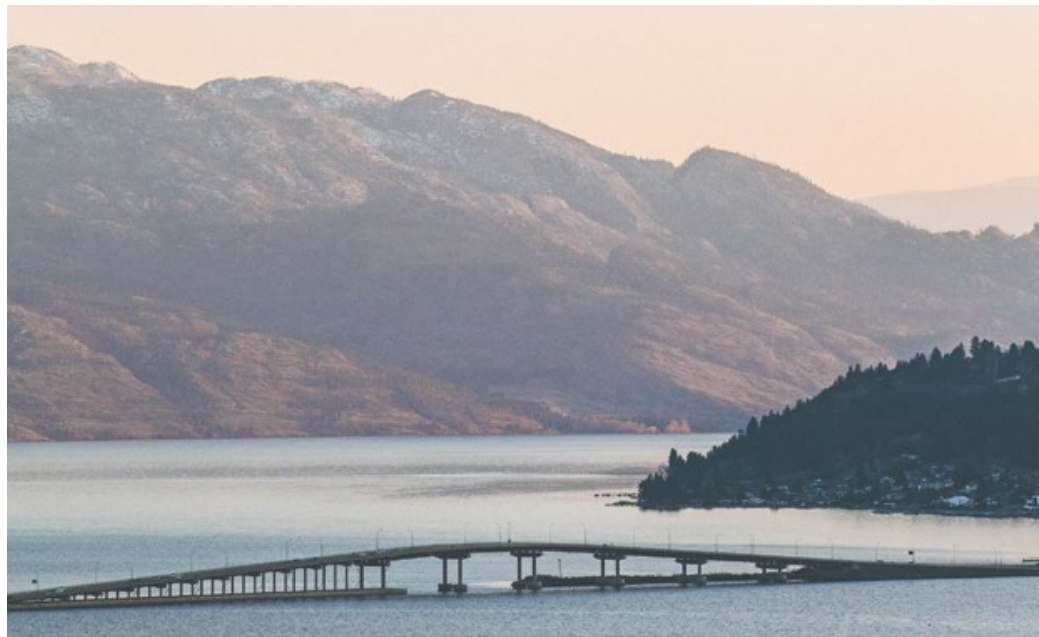
● MORNING WALK

● AFTERNOON JOG

● LATE NIGHT FOOD RUN

You are now entering Civic Nation.

The Civic has come a long way, and it keeps getting better. Since 1998, the Civic has been Canada's best-selling car and it's no wonder. The stunning exterior and impressive performance of the 2017 Civic are clear examples of its exciting evolution. Its progressive look is perfectly complemented by a sophisticated interior designed with your comfort and safety in mind. If you're looking for greatness, we've got a seat for you.



Room for everything but compromise.

Turns out, looks can get you everywhere. With an aggressive stance and sporty, sleek lines, the Civic Sedan looks great from every angle. Up front, LED daytime running lights and available LED headlights give it a distinctive presence that lets everyone know you're coming. When you're in it, you'll sit pretty on its available fashionable 17" aluminum-alloy wheels. If you want a fresh view, lower the windows, tap a button and open up the available power moonroof with tilt feature. Plus, available fog lights up front and available mirror-integrated LED turn signal indicators help you stand out on the road. Be proud. Confidence looks good on you.

Key Features: Standard LED daytime running lights and available LED headlights | Available 17" aluminum-alloy wheels | Available rear deck lid spoiler

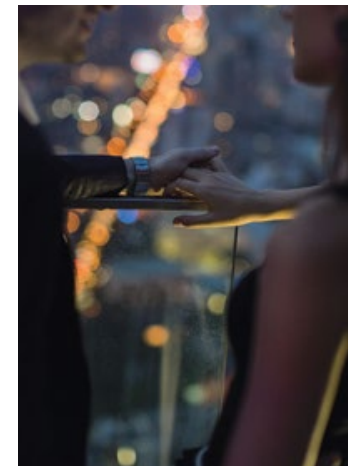
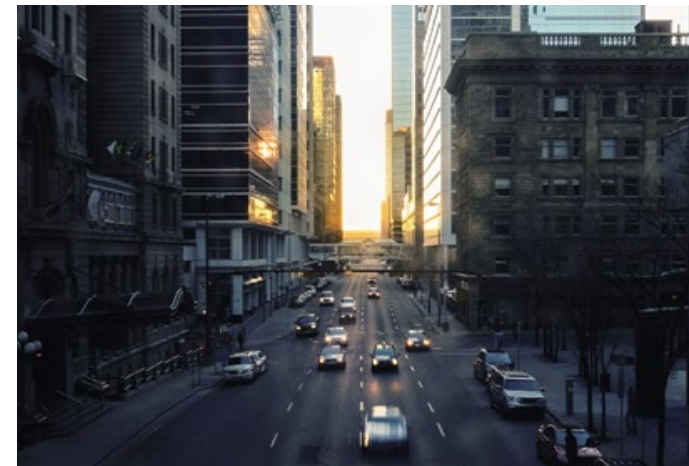




● START WITH DINNER

20

Accessorized model shown.



● END UP AT A MOVIE

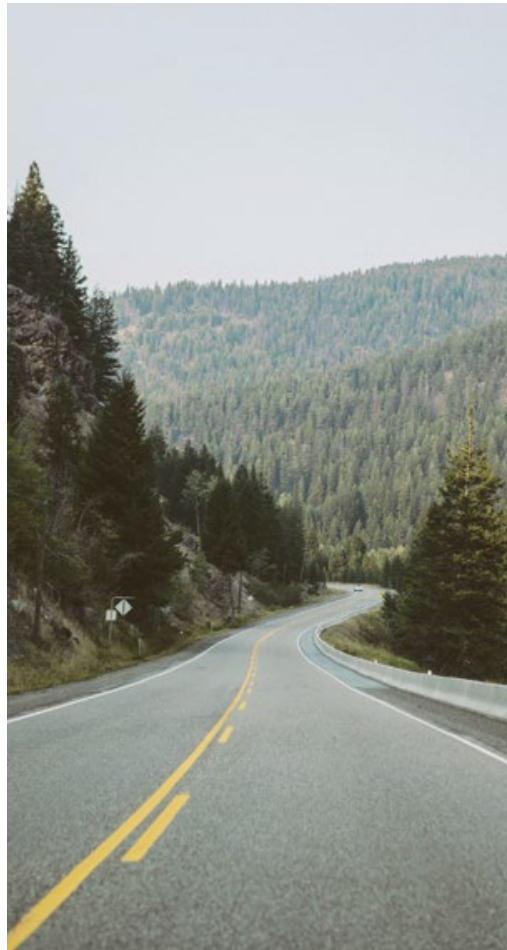
● DISCUSS IT OVER DESSERT

20

Two doors. One of a kind.

The Coupe's jaw-dropping exterior is bound to make you do a double take. With a low-slung, aggressive stance and sleek, clean lines hugging the Coupe's exterior, it stands out from the crowd wherever it goes. Below its tough-looking shell sit standard 16" aluminum-alloy wheels. To satisfy the edgier side of you, 17" aluminum-alloy wheels are available as well. Around the back, you'll catch yourself admiring the view thanks to the signature LED taillights and taillight-integrated rear spoiler. If you think the Civic Coupe looks like fun, just wait until you get behind the wheel.

Key Features: Available power moonroof with tilt feature | Available fog lights and mirror-integrated LED turn signal indicators | Standard LED daytime running lights and available LED headlights | Available 17" aluminum-alloy wheels



● SELFIE WITH GIRLFRIEND

400

● SELFIE WITH DOG

● SELFIE WITH SELF

400

Beauty really does come from the inside.

If you thought the Civic looked good outside, wait until you get in. Available heated front and rear seats (rear available on Sedan only), plus available leather trimmed seating surfaces, make it look like a hot ride that's extremely easy to warm up to. Plus, the available dual-zone automatic climate control lets you and your passenger choose your own temperatures. Up front, the sleekly-designed, available leather-wrapped steering wheel with mounted audio and available cruise control helps keep control at your fingertips. Plus, the available 60/40 split fold-down seatback helps you accommodate larger or bulky items. And the available proximity key entry system with pushbutton start makes it even easier to get in and get going. For the full experience, just hit the accelerator and find some open roads.

Key Features: Available heated front and rear seats (rear available on Sedan only) | Available leather trimmed seating surfaces | Available dual-zone automatic climate control | Available 60/40 split fold-down rear seatback



Sedan model shown.



Sedan model shown.



● HIT THE ROAD

403

● HIT HEAVY TRAFFIC

403

● HIT THE DRIVE-THRU

Runs on fuel, fun and adventure.

Whether it's a long drive or short haul, an open road or rush hour traffic, you'll look forward to powering through it all with the Civic. The 1.5-litre turbocharged direct-injected 4-cylinder engine is available on every Civic model. The 2.0-litre, 16-valve, DOHC, i-VTEC® engine is standard on the Sedan and Coupe. If you're the type who loves control, you'll love the standard 6-speed manual transmission (MT) on the Sedan (DX and LX) and Coupe (LX and EX-T). But if you simply want to pop it in drive and go, the available continuously variable transmission (CVT) is your golden ticket. Plus, thanks to Eco Assist™ with ECON mode, the Civic is designed to help keep you on the road longer, and away from gas stations.



Coupe model shown.





● SING IN THE SHOWER

● SING IN THE CAR

● SING WITH THE BAND

The Hatchback is back.

The Civic Hatchback is back and it's better than ever. With a uniquely sporty design and innovative silhouette, the Hatchback is guaranteed to get attention on the road and in your driveway. Its aggressive stance is boldly complemented by a distinctive body-coloured rear roofline spoiler and an available dual centre exhaust with chrome finisher. With the available 18" aluminum-alloy wheels and the sporty skirt package, you'll stand out even more. Plus, with the available LED headlights and a standard multi-angle rearview camera,¹ you'll keep a close watch on your surroundings. With the all-new Civic Hatchback, just step in and you'll stand out.

Key Features: Available LED headlights | Available 18" aluminum-alloy wheels with dark finish | Available dual centre exhaust with chrome finisher | Standard body-coloured rear roofline spoiler

1. None of the features we describe are intended to replace the driver's responsibility to exercise due care while driving. Drivers should not use handheld devices or operate certain vehicle features unless it is safe and legal to do so. Some features have technological limitations. For additional feature information, limitations and restrictions, please visit www.honda.ca/disclaimers and refer to the vehicle's Owner's Manual.





● FULL CARGO AREA

15

● FULL HOUSE AT VENUE

● FULLY LOSE YOUR VOICE

15

All Civic. More cargo.

If you're impressed with its look, just wait until you see what's inside. Not only does the Hatchback boast a striking exterior, it also offers progressive versatility with best-in-class cargo space.¹ With the convenient 60/40 split fold-down rear seatback, packing in whatever you need will be a breeze. The Hatchback comes equipped with heated front seats and available heated rear seats that help make the sometimes unbearable Canadian winters a little more, well, bearable. In addition, the cargo cover can be easily retracted to give you more options when filling up the back. Who knew practicality could look so good?

Key Features: Class-leading seat up cargo volume¹ | 60/40 split-fold down rear seatback | Heated front seats | Available heated rear seats | Retractable cargo cover

1. Rear cargo volume with the rear seats up. Based on information available to Honda Canada Inc. as of September 29, 2016.



8
● ESCAPE OFFICE EARLY

8
● TRAPPED IN GRIDLOCK

Turbocharged. Manual. And for your third wish?

In the Civic Hatchback, getting there is way more than half the fun. The 1.5-litre, 16-valve, Direct Injection, DOHC, turbocharged 4-cylinder engine makes any drive a joy ride. If you're looking for great power and control, the 6-speed manual transmission comes standard on all trims. If you'd rather skip the shift and drive, the available continuously variable transmission (CVT) and available steering wheel-mounted paddle shifters are perfect for you. With the Civic Hatchback, you'll have more room, more power and absolutely more fun than ever before.

Key Features: 1.5-litre, 16-valve, Direct Injection, DOHC turbocharged 4-cylinder engine | 6-speed manual transmission | Available continuously variable transmission (CVT) | Available steering wheel-mounted paddle shifters

8
● FINALLY FREE TILL MONDAY MORNING



Beauty is nothing without brains.

1

Available Honda LaneWatch™ blind spot display.

Keep more of your right side in sight with available Honda LaneWatch™ blind spot display¹. It's engineered to send a live video feed from a camera mounted under your passenger-side mirror to your Display Audio System¹, providing close to four times more visibility than a side view mirror alone.

2

Available Apple CarPlay™/Android Auto.™

Your Civic has the soul of a smartphone. Teamed up with the available Display Audio System¹, Apple CarPlay™^{1,2} and Android Auto™^{1,2} seamlessly connect your compatible smartphone to let you use some of your apps. It'll make staying in touch with family and friends more convenient and your drive more entertaining.

3

7" Display Audio System.

The available state-of-the-art Display Audio System¹ is technology worthy of a keynote address. Intuitive and easy to use, it features a 7" touch-screen and works just like a tablet. This means you can swipe, pinch and tap to navigate through the audio system, display settings and advanced features. It's innovation you can touch.

4

Available wireless charging.

Just drop any Qi wireless charging compatible smartphone or accessory case into the available wireless charging pad and the Civic will keep your phone juiced.

5

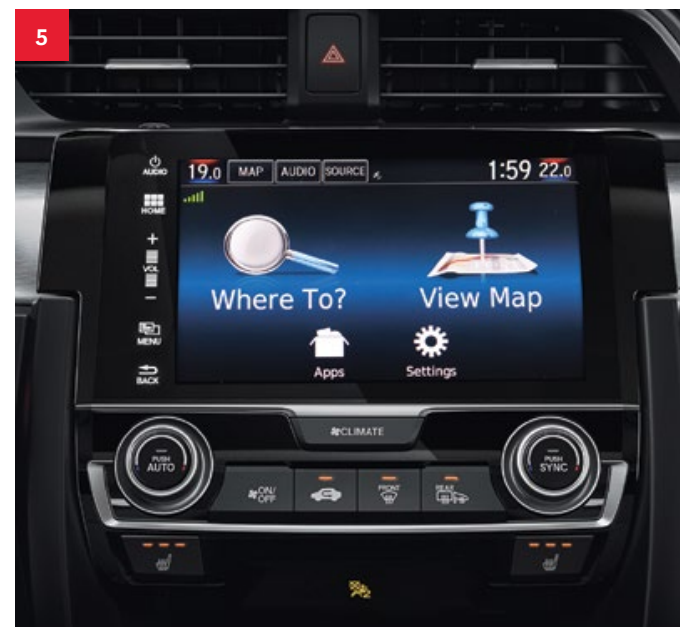
Available Honda Satellite-Linked Navigation System™ with bilingual Voice Recognition.

The available Honda Satellite-Linked Navigation System™^{1,3} comes with bilingual Voice Recognition, and uses the Display Audio System¹ to plan your route. It's like asking someone for directions who actually knows where they're going.

6

Multi-angle rearview camera.

In the Civic, you'll feel like you've got eyes on the back of your head. Once you swing it into reverse, a live feed from a rear camera¹ is shown right on the Display Audio System¹. What's behind you is no longer a mystery.



1. None of the features we describe are intended to replace the driver's responsibility to exercise due care while driving. Drivers should not use handheld devices or operate certain vehicle features unless it is safe and legal to do so. Some features have technological limitations. For additional feature information, limitations and restrictions, please visit www.honda.ca/disclaimers and refer to the vehicle's Owner's Manual.
 2. Only compatible with certain devices and operating systems. Cellular data and/or voice charges may apply, including roaming charges and/or other amounts charged by your wireless carrier.
 3. Map database covers major metropolitan areas in Canada and the 48 contiguous U.S. states.

See more than the road ahead.

The Honda Sensing™ technologies are designed to help make your drive safer. With intuitive technology and design, we've created a way forward that we can all feel good about. Whether you're driving or sitting in the passenger seat, feel confident in the latest in safety innovation from Honda.



Forward Collision Warning (FCW) system.

The available FCW system¹ that is integrated with CMBS[®] is designed to detect the presence of vehicles in front of you and issue alerts if you're approaching with too much speed. If you fail to respond to the alerts, the CMBS[®] is triggered into operation.



Collision Mitigation Braking System™ (CMBS[®]).

To help reduce the likelihood or severity of a frontal impact, the available CMBS[®] is engineered to apply brake pressure if you don't slow down when it senses you're at risk of a collision. If it still senses an imminent collision, CMBS[®] is designed to brake firmly.



Lane Departure Warning (LDW) system.

The available LDW system¹ is designed to monitor vehicle lane position and alert you if your vehicle drifts into a new lane when you haven't signaled.



Lane Keeping Assist System (LKAS).

The available LKAS¹ is engineered to gently correct your steering if you begin to leave a detected lane without signaling, applying torque progressively to the steering to help guide you back to the centre of the lane.



Road Departure Mitigation (RDM) system.

The available Road Departure Mitigation system¹ is designed to help steer and even apply the brakes to help keep the vehicle from leaving the road.



Adaptive Cruise Control (ACC) with Low-Speed Follow (LSF)².

The available ACC system¹ is designed to keep a set speed and set following interval behind the vehicle detected ahead of yours, including the ability to start and stop the vehicle with the flow of traffic.



1. None of the features we describe are intended to replace the driver's responsibility to exercise due care while driving. Drivers should not use handheld devices or operate certain vehicle features unless it is safe and legal to do so. Some features have technological limitations. For additional feature information, limitations and restrictions, please visit www.honda.ca/disclaimers and refer to the vehicle's Owner's Manual.
2. Low-Speed Follow is not applicable on MT trims with Honda Sensing™ safety and driver assist features.



Solid on safety.

At Honda, we strive to provide a high level of standard safety features to help ensure the safety of occupants, other drivers and even pedestrians. This added peace of mind helps our drivers maintain the confidence to enjoy every road to the fullest.

PASSIVE SAFETY



Advanced Compatibility Engineering™ (ACE™) body structure

The highly innovative, next generation Advanced Compatibility Engineering™ (ACE™) body structure is engineered to help disperse frontal impact energy to enhance occupant protection, while more effectively controlling it in severe collisions to help prevent intrusion into the passenger cabin.



Child safety

The Civic features childproof rear door locks (Sedan and Hatchback only), as well as rear seat Lower Anchors and Tethers for Children (LATCH), which give you a simple and convenient method to install compatible child safety seats without using the vehicle's seat belt system.



Pedestrian safety

Innovative pedestrian safety features include an energy-absorbing hood and front fenders and deformable wiper pivots.



Seat belt safety

The Civic helps prepare you for the unexpected with 3-point height-adjustable (Sedan and Hatchback only) front seat belts with automatic tensioning system and 3-point rear seat belts.



Six standard airbags

The cabin of the Civic contains six standard airbags. It features dual-stage, multiple-threshold front airbags as well as side curtain airbags with rollover sensors, which are designed to deploy the side curtain airbags in the event of a rollover. Plus, it has SmartVent™ side airbags, which are designed to deploy in a manner that mitigates the risk of injury to out-of-position or smaller occupants.



HondaLink™ Assist Automatic Emergency Response System

The available HondaLink Assist Automatic Emergency Response System^{1,2,3} helps you get the help you need when you need it most. If the airbags deploy, your Display Audio System¹ is designed to automatically attempt to put you on a call with an operator who will forward your location to first responders if needed. It works with any compatible Bluetooth®-paired phone as long as it has reception, does not require a subscription and gives you added peace of mind while you're on the road.

ACTIVE SAFETY



Controlled Braking

To assist with safe stopping, the 4-wheel Anti-lock Braking System¹ (ABS) is designed to help you maintain control under hard braking conditions, while Electronic Brake-force Distribution (EBD) helps to optimize braking power based on weight distribution inside the vehicle. In addition, Brake Assist is engineered to help improve braking performance by applying brake pressure when a panic stop is detected.



Vehicle Stability Assist (VSA®) with Traction Control

Vehicle Stability Assist¹ with Traction Control is designed to sense and help correct oversteer and understeer scenarios to enhance handling and cornering stability, while Traction Control is designed to minimize wheel spin when accelerating on loose or slippery surfaces, helping to inspire greater driver confidence.



Hill Start Assist¹

When you take your foot off the brake, this feature is engineered to temporarily maintain brake pressure to help prevent your Civic from starting to roll backwards when stopped on an incline.

1. None of the features we describe are intended to replace the driver's responsibility to exercise due care while driving. Drivers should not use handheld devices or operate certain vehicle features unless it is safe and legal to do so. Some features have technological limitations. For additional feature information, limitations and restrictions, please visit www.honda.ca/disclaimers and refer to the vehicle's Owner's Manual.
 2. Only compatible with certain devices and operating systems. Cellular data and/or voice charges may apply, including roaming charges and/or other amounts charged by your wireless carrier.
 3. Operation requires wireless mobile phone to be paired with the vehicle. Operation is dependent upon cellular data and/or voice connection availability and GPS satellite signal reception.



Rear splash guards



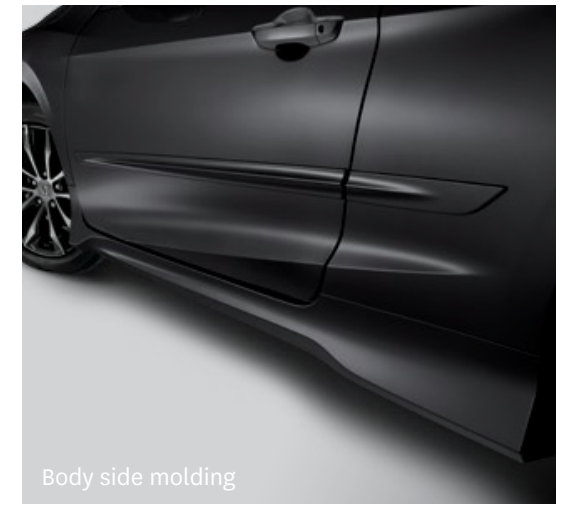
Lower door garnish



All-season floor mats (high wall)



Rear wing spoiler



Body side molding



Rear deck lid spoiler



Moonroof visor



17" Alloy wheel



Trunk tray



Car cover

Sedan Accessories.

- 17" Alloy wheel
- Ambient lighting (blue)
- All-season floor mats (high wall)
- Ashtray, cup-holder style
- Auto day/night mirror
- Auto day/night mirror attachment
- Body side molding
- Car cover
- Cargo hook
- Cargo net
- Door edge film
- Door edge guards
- Door sill trim, illuminated

- Door visors
- Engine block heater
- Fog lights
- Front underbody spoiler
- Full nosemask
- Hood edge deflector
- Illuminated console (blue)
- Lower door garnish
- Moonroof visor
- Paint pen
- Rear bumper appliqué
- Rear cupholder
- Rear deck lid spoiler

- Rear seat cover
- Rear splash guards
- Rear underbody spoiler
- Rear wing spoiler
- Remote engine starter attachment
- Remote engine starter base
- Remote engine starter FOB
- Side underbody spoiler
- Trunk tray
- Trunk edge and bumper protector
- Wheel locks
- Wireless charger
- Wireless charger attachment

Protection package

- All-season floor mats (high wall)
- Rear splash guards
- Trunk tray

Remote engine starter package

- Base unit
- Attachment

Aero kit package

- Front underbody spoiler
- Rear underbody spoiler
- Side underbody spoiler

Coupe Accessories.

- 17" Alloy wheel
- Ambient lighting (blue)
- All-season floor mats (high wall)
- Ashtray, cup-holder style
- Auto day/night mirror
- Auto day/night mirror attachment
- Body side molding
- Car cover
- Cargo hook
- Cargo net
- Door edge film
- Door edge guards

- Engine block heater
- Fog lights
- Front underbody spoiler
- Full nosemask
- Hood edge deflector
- Illuminated console (blue)
- Moonroof visor
- Paint pen
- Rear bumper appliqué
- Rear seat cover
- Rear splash guards
- Rear underbody spoiler

- Rear wing spoiler
- Remote engine starter attachment
- Remote engine starter base
- Remote engine starter FOB
- Side underbody spoiler
- Trunk tray
- Trunk edge and bumper protector
- Wheel locks
- Wireless charger
- Wireless charger attachment

Protection package

- All-season floor mats (high wall)
- Rear splash guards
- Trunk tray

Remote engine starter package

- Base unit
- Attachment

Aero kit package

- Front underbody spoiler
- Rear underbody spoiler
- Side underbody spoiler



Drilled brake disk rotor



17" Alloy wheel



Wireless charger



Tailgate spoiler



All-season floor mats

Hatchback Accessories.

- 17" Alloy wheel
- 18" Alloy wheel
- All-season floor mats
- Ambient lighting (blue or red)
- Auto day/night mirror
- Auto day/night mirror attachment
- Body side molding
- Car cover
- Cargo net
- Door edge film
- Door edge guards
- Door sill trim, illuminated
- Door visor

- Drilled brake disk rotor, front and rear*
- Engine block heater
- Floor mats*
- Fog lights
- Front underbody spoiler
- Full nose mask
- Illuminated console (blue or red)
- Lower door garnish
- Moonroof visor
- Paint pen
- Rear bumper appliqué
- Rear seat cover

- Rear splash guards
- Rear underbody spoiler
- Remote engine starter
- Remote engine starter attachment
- Remote engine starter FOB
- Side underbody spoiler
- Sports pedals
- Tailgate spoiler
- Trunk tray
- Wheel locks
- Wireless charger
- Wireless charger attachment

Protection package

- All-season floor mats
- Trunk tray

Aero kit package

- Front underbody spoiler
- Rear underbody spoiler
- Side underbody spoiler



HondaJet



Motorcycles



Side By Side



ASIMO



Honda Campus



Marine



Power Equipment



ATVs



Blue Skies for Our Children

The Power of Dreams, in all their forms.

At Honda, we're committed to being a leader in innovative thinking. It's part of everything we do, from the design of our vehicles to the way we work. We have a proud tradition of turning ideas into products and initiatives that help move and improve people's lives in every conceivable way. Today, our innovation manifests itself in many forms: our revolutionary Earth Dreams™ technology; the race-inspired performance of our motorcycles and automobiles; the world's most advanced humanoid robot, ASIMO; HondaJet, the fastest, highest flying and most fuel-efficient aircraft in its class; and the first full line of fuel-efficient, low-emission, 4-stroke outboard motors. We continually strive to do things others think can't be done, because true innovation comes from daring to dream.

Beyond dreaming up new products, Honda believes we have a responsibility to help preserve our planet. This belief is why we make significant efforts to help ensure preservation of the environment in virtually all of our company's activities. It's why our head office in Markham, Ontario was designed and built to be LEED® (Leadership in Energy and Environmental Design) Gold Certified. It's why our Alliston, Ontario plant is ISO 14001 certified. And it's why Honda, along with our associates and families, has helped plant more than 100,000 trees in Canada over the last 9 years.

As we move forward, we will continue to honour our responsibility and tradition of turning innovative ideas into products that help make our world a better place. That's what we do. That's The Power of Dreams.





We're Here. At Honda, assistance and support are always available. The team of trained technicians at your Honda dealership will help keep your vehicle in terrific shape. If you need more information or assistance relating to your warranty, call us at 1-888-9-HONDA-9. For all of the latest Honda information, including product specifications, pricing, photos and more, visit honda.ca. It has everything you need to "design" your Honda and personalize it with items from a list of quality accessories.

We're Ready to Help. When you purchase a new Honda, you automatically receive Honda Plus Roadside Assistance. This service is available to you, or any authorized driver, 24 hours a day, 7 days a week, anywhere in Canada or the continental United States. Coverage is for 3 years over an unlimited distance and includes a 24-hour toll-free Honda Plus Roadside Assistance number, mechanical breakdown towing, emergency roadside service and many other helpful features. Ask your dealer for more information.

Honda Plus Extended Warranty. Experience added protection with Honda Plus coverage that is behind you for the road ahead. With available coverage options of up to 8 years/200,000 km, you can choose the one that best suits your needs. With a plan this wide-ranging, the only thing that's uncertain is where it will take you.

Honda Financial Services. Whether you buy or lease a Honda, Honda Financial Services can assist you with the process. Ask your dealer which lease or purchase plan best suits your needs.

New Honda Vehicle Warranty. The Honda warranty protection makes Power Train components a minor concern with the Honda 5-year/100,000-km No Nonsense Warranty. In addition to the Honda 5-year/100,000-km No Nonsense Warranty, you and your new Honda are protected by a Honda 3-year/60,000-km Distributor's Warranty as well as an additional series of warranties for such items as emission controls, body corrosion and more.

Genuine Honda Accessories give you the opportunity to fine-tune your new Honda just how you like it. Whether you want to turn up the style, the versatility or the exclusivity, every accessory is designed and built to adhere to the strictest Honda standards. See your dealer for full details.

Genuine Honda Replacement Parts are made to the same exacting standards as original Honda components and are guaranteed by the Genuine Honda Parts Warranty. Using Genuine Honda Parts will help to maintain the quality, reliability and performance of your vehicle.

Always use seat belts and appropriate child seats. Children 12 and under are safest when properly restrained in a rear seat. Properly secure all items stored in the cargo area. Always read the vehicle owner's manual for detailed vehicle operation and feature information.

Honda reserves the right to terminate or change any of the services and/or features listed in this brochure at any time, for any reason. Some features require registration. Certain features may transmit to Honda and/or other service providers a vehicle's location, operating conditions or other information that may be tied to the vehicle identification number (VIN) and can be combined to track a vehicle. For Honda's data use and privacy policy, see www.honda.ca/privacy. Specifications, features, illustrations and equipment shown in this brochure are based upon the latest available information at the time of publication. Although descriptions are believed to be correct, accuracy cannot be guaranteed. Honda reserves the right to make changes at any time, without notice or obligation, in colours, specifications, accessories, materials, models and trim availability. Some vehicles may be shown with optional equipment. Some vehicles shown may be U.S. models. Canadian specifications may vary. For Android Auto™ data use and privacy policy, see Terms and Privacy Policy for Android Auto™ app or contact Google Inc. at www.google.com. For Apple CarPlay™ data use and privacy policy, see Terms and Privacy policy for Apple CarPlay™ or contact Apple Inc. at www.apple.com. Aha, the Aha logo, and the Aha trade dress are trademarks or registered trademarks of HARMAN International Industries, used by permission. Android Auto is a trademark of Google Inc. Apple CarPlay, Siri and iPhone are trademarks of Apple Inc., registered in the U.S. and other countries. Bluetooth is a registered trademark of SIG Inc. Blu-ray is a trademark of Blu-ray Disc Association. HomeLink and HandsFreeLink are registered trademarks or trademarks of Johnson Controls Technology. HD Radio™ is a proprietary trademark of iBiquity Digital Corp. HDMI is a registered trademark of HDMI Licensing LLC. Windows Media is a registered trademark of Microsoft Corporation. LEED® is a registered trademark of the U.S. Green Building Council, licensed to the Canada Green Building Council for use in Canada. © 2016 Sirius XM Canada Inc. "SiriusXM", the SiriusXM logo, channel names and logos are trademarks of SiriusXM Radio Inc. and are used under licence. Honda, Accord, Civic, CR-V, Fit, HR-V, Odyssey, Pilot, Ridgeline, i-VTEC, Advanced Compatibility Engineering, ACE, Collision Mitigation Braking System, CMBS, Drive-by-Wire Throttle System, Earth Dreams, Eco Assist, HondaLink, Honda Satellite-Linked Navigation System, Honda Sensing, Honda LaneWatch, HondaVAC, i-VTM4, Intelligent Control System, Magic Seat, Maintenance Minder, PGM-FI, Real Time AWD, SmartVent, Variable Cylinder Management, VCM, VSA, The Power of Dreams, HondaJet and ASIMO are trademarks of Honda Motor Co., Ltd. Honda Canada Inc., 180 Honda Boulevard, Markham, ON, Canada L6C 0H9. 1-888-9-HONDA-9. www.honda.ca.

Sedan

ENGINE	DX	LX	EX	EX-T	TOURING
2.0-litre, 16-valve, Port Injection, DOHC, i-VTEC® 4-cylinder	•	•	•		
1.5-litre, 16-valve, Direct Injection, DOHC, turbocharged 4-cylinder				•	•
Horsepower @ rpm¹	158 @ 6500	158 @ 6500	158 @ 6500	174 @ 6000	174 @ 6000
Torque (lb.-ft. @ rpm)¹	138 @ 4200	138 @ 4200	138 @ 4200	162 @ 1700-5500	162 @ 1700-5500
Displacement (cc)	1996	1996	1996	1498	1498
Emissions rating	Tier 3 Bin 125	Tier 3 Bin 125	Tier 3 Bin 125	Tier 3 Bin 125	Tier 3 Bin 125
Bore and stroke (mm)	86 X 85.9	86 X 85.9	86 X 85.9	73 X 89.5	73 X 89.5
Compression ratio	10.8:1	10.8:1	10.8:1	10.6:1	10.6:1
Drive-by-Wire Throttle System™	•	•	•	•	•
Eco Assist™ system	•	•	•	•	•
Recommended fuel	Regular	Regular	Regular	Regular	Regular

DRIVETRAIN	DX	LX	EX	EX-T	TOURING
6-speed manual transmission (MT)	•	•			
Continuously variable transmission (CVT)		Available	•	•	•
ECON mode button	•	•	•	•	•
Front-wheel drive	•	•	•	•	•

CHASSIS	DX	LX	EX	EX-T	TOURING
16" steel wheels with full covers	•	•			
16" aluminum-alloy wheels			•		
17" aluminum-alloy wheels					•
17" aluminum-alloy wheels (aero design)				•	
Agile Handling Assist² (AHA)	•	•	•	•	•
All-season tires	P215/55 R16 93H	P215/55 R16 93H	P215/55 R16 93H	P215/50 R17 91H	P215/50 R17 91H
Capless fueling system	•	•	•	•	•
Variable Ratio Electric Power-Assisted Rack-and-Pinion Steering (EPS)	•	•	•	•	•
Electronic Parking Brake (EPB) with automatic brake hold	•	•	•	•	•
Front and rear stabilizer bars	25.0/16.5	25.0/16.5	25.5/16.5	25.5/16.5	26.5/17.0
Independent strut front suspension	•	•	•	•	•
Independent multi-link rear suspension	•	•	•	•	•
Power-assisted, ventilated front disc/solid rear disc brakes	•	•	•	•	•
Straight Driving Assist	•	•	•	•	•
Temporary spare tire	T125/80 D16 97M	T125/80 D16 97M	T125/80 D16 97M	T125/80 D16 97M	T125/80 D16 97M

ACTIVE SAFETY	DX	LX	EX	EX-T	TOURING
4-wheel Anti-lock Braking System² (ABS)	•	•	•	•	•
Brake Assist	•	•	•	•	•
Electronic Brake-force Distribution (EBD)	•	•	•	•	•
Collision Mitigation Braking System™² (CMBS®) (HS*)		Honda Sensing™ model	•	•	•
Forward Collision Warning (FCW) system² (HS*)		Honda Sensing™ model	•	•	•
Hill Start Assist²	•	•	•	•	•
Lane Departure Warning (LDW) system² (HS*)		Honda Sensing™ model	•	•	•
LED daytime running lights	•	•	•	•	•
Road Departure Mitigation (RDM) system² (HS*)		Honda Sensing™ model	•	•	•
Vehicle Stability Assist² (VSA®) with Traction Control	•	•	•	•	•

HS* = Feature is a component of the Honda Sensing™ suite of safety and driver assist features.

PASSIVE SAFETY	DX	LX	EX	EX-T	TOURING
3-point seat belts with front automatic tensioning system	•	•	•	•	•
Next-Generation Advanced Compatibility Engineering™ (ACE™) body structure	•	•	•	•	•
Childproof rear door locks	•	•	•	•	•
Dual-stage, multiple-threshold front airbags (SRS)	•	•	•	•	•
Side curtain airbags with rollover sensor system	•	•	•	•	•
SmartVent™ side airbags	•	•	•	•	•
Front height-adjustable seat belt anchors	•	•	•	•	•
HondaLink™ Assist Automatic Emergency Response System²,³,⁴	•	•	•	•	•
Lower Anchors and Tethers for Children (LATCH)	•	•	•	•	•

DRIVER ASSIST TECHNOLOGY	DX	LX	EX	EX-T	TOURING
Adaptive Cruise Control (ACC)² with Low-Speed Follow (HS*)		Honda Sensing™ model	•	•	•
Honda LaneWatch™ blind spot display²			•	•	•
Lane Keeping Assist System (LKAS)² (HS*)		Honda Sensing™ model	•	•	•

HS* = Feature is a component of the Honda Sensing™ suite of safety and driver assist features.

EXTERIOR	DX	LX	EX	EX-T	TOURING
Body-coloured bumpers	•	•	•	•	•
Body-coloured door handles	•	•	•	•	Chrome
Deck lid spoiler			•	•	•
Fog lights			•	•	•
Folding door mirrors	•	•	•	•	•
Front splash guards	•	•	•	•	•
Heated power door mirrors	Black	Body-coloured	Body-coloured	Body-coloured	Body-coloured with chrome accent
Intermittent windshield wipers	•	•			
LED front turn signal indicators					•
LED headlights (High and low beam)					With auto-on/off
LED taillights	•	•	•	•	•
Mirror-integrated LED turn signal indicators			•	•	•
One-touch power moonroof with tilt feature			•	•	•

Sedan

EXTERIOR (CONTINUED)	DX	LX	EX	EX-T	TOURING
Projector-beam halogen headlights	With auto-off	With auto-on/off	With auto-on/off	With auto-on/off	
Rain-sensing windshield wipers					•
Rear window defroster	•	•	•	•	•
Shark fin antenna					•
Speed-sensing, variable intermittent windshield wipers			•	•	•

COMFORT & CONVENIENCE	DX	LX	EX	EX-T	TOURING
12-volt power outlet	1	1	1	1	1
7" colour TFT centre meter display with Driver Information Interface			•	•	•
Acoustic windshield			•	•	•
Auto-dimming rearview mirror					•
Automatic climate control with air-filtration system	Without A/C	•	Dual-zone	Dual-zone	Dual-zone
Cargo area light	•	•	•	•	•
Display Audio System² with Honda Satellite-Linked Navigation System™²,⁵ with bilingual Voice Recognition					•
Driver's and front passenger's vanity mirrors	•	•	Illuminated	Illuminated	Illuminated
Exterior temperature indicator	•	•	•	•	•
Front and rear door pockets	•	•	•	•	•
HandsFreeLink™ -bilingual Bluetooth® wireless mobile phone interface²,³	•	•	•	•	•
Immobilizer theft-deterrent system	•	•	•	•	•
Maintenance Minder™ system	•	•	•	•	•
Map lights	•	•	•	•	•
Multi-angle rearview camera²	•	With dynamic guidelines	With dynamic guidelines	With dynamic guidelines	With dynamic guidelines

Multi-functional centre console storage	•	•	•	•	•
One-touch turn signals	•	•	•	•	•
Passenger-side seatback pocket			•	•	•
Power windows with auto-up/down driver's and passenger's window	•	•	•	•	•
Power door locks	•	•	•	•	•
Proximity key entry system with pushbutton start			•	•	•
Rear armrest with cupholders		•	•	•	•
Rear-seat heater ducts	•	•	•	•	•
Remote engine starter			•	•	•
Remote entry system with electronic trunk release	•	•			
Security system	•	•	•	•	•
Steering wheel-mounted cruise control		•	•	•	•
Tilt and telescopic steering column	•	•	•	•	•
Walk-away door lock			•	•	•
Wireless charging					•

SEATING & TRIM	DX	LX	EX	EX-T	TOURING
60/40 split fold-down rear seatback		•	•	•	•
Driver's seat with 6-way manual adjustment	•	•	•	•	
Driver's seat with 8-way power adjustment					•
Front passenger's seat with 4-way manual adjustment	•	•	•	•	
Front passenger's seat with 4-way power adjustment					•
Floor mats	•	•	•	•	•
Fold-down rear seatback	•				
Heated front seats		•	•	•	•
Heated rear seats					•
Leather-trimmed seating surfaces					•
Leather-wrapped steering wheel				•	•

ENTERTAINMENT	DX	LX	EX	EX-T	TOURING
160-watt AM/FM audio system with MP3/Windows Media® Audio playback capability and 4 speakers	•				
180-watt AM/FM audio system with MP3/Windows Media® Audio playback capability and 8 speakers		•	•	•	
452-watt AM/FM Premium audio system with MP3/Windows Media® Audio playback capability and 10 speakers including subwoofer					•
Apple CarPlay™²,³ / Android Auto™²,³		•	•	•	•
Bluetooth® Streaming Audio²,³	•	•	•	•	•
5-inch colour LCD display	•				
Display Audio System² with HondaLink™²,³		•	•	•	Including Navigation¹,⁵

HD Radio™⁶					•
Illuminated steering wheel-mounted audio controls	•	With capacitive touch controls	With capacitive touch controls	With capacitive touch controls	With capacitive touch controls
Siri Eyes Free compatibility²,³	•	•	•	•	•
SiriusXM™²,⁷					•
SMS text message²,³ / E-mail function²,³		•	•	•	•
Speed-sensitive Volume Control (SVC)	•	•	•	•	•
USB device connector³	1	2	2	2	2
Wi-Fi tethering³		•	•	•	•

FUEL ECONOMY® (L/100 KM)	DX	LX	EX	EX-T	TOURING
Continuously variable transmission (City/Hwy/Combined)		7.8 / 6.0 / 7.0	7.8 / 6.0 / 7.0	7.4 / 5.6 / 6.6	7.4 / 5.6 / 6.6
Manual transmission (City/Hwy/Combined)	8.5 / 6.0 / 7.4	8.5 / 6.0 / 7.4			

Sedan

DIMENSIONS	DX	LX	EX	EX-T	TOURING
Cargo volume (L)	428	428	428	428	416
Curb weight – MT/CVT (kg)	1247/NA	1257/1260/1265 (Honda Sensing™ model)	NA/1278	NA/1326	NA/1334
Fuel tank capacity (L)	46.9	46.9	46.9	46.9	46.9
Ground clearance – no-load/full-load (mm)	125/108	125/108	125/108	125/108	125/108
Headroom – front/rear (mm)	997/942	997/942	953/935	953/935	953/935
Height (mm)	1416	1416	1416	1416	1416
Hip room – front/rear (mm)	1364/1201	1364/1201	1364/1201	1364/1201	1364/1201
Legroom – front/rear (mm)	1074/950	1074/950	1074/950	1074/950	1074/950
Length (mm)	4631	4631	4631	4631	4631
Passenger volume (L)	2769	2769	2690	2690	2690
Shoulder room – front/rear (mm)	1447/1397	1447/1397	1446/1397	1446/1397	1446/1397
Track – front/rear (mm)	1547/1563	1547/1563	1547/1563	1547/1563	1547/1563
Turning radius (m) (curb-to-curb)	5.4	5.4	5.4	5.4	5.4
Wheelbase (mm)	2700	2700	2700	2700	2700
Width – including mirrors/mirrors folded (mm)	2076/1878	2076/1878	2087/1878	2087/1878	2087/1878

- Horsepower and torque calculations reflect SAE net, Rev. 08/04, SAE J1349 procedures.
- None of the features we describe are intended to replace the driver’s responsibility to exercise due care while driving. Drivers should not use handheld devices or operate certain vehicle features unless it is safe and legal to do so. Some features have technological limitations. For additional feature information, limitations and restrictions, please visit www.honda.ca/disclaimers and refer to the vehicle’s Owner’s Manual.
- Only compatible with certain devices and operating systems. Cellular data and/or voice charges may apply, including roaming charges and/or other amounts charged by your wireless carrier.
- Operation requires wireless mobile phone to be paired with the vehicle. Operation is dependent upon cellular data and/or voice connection availability and GPS satellite signal reception.
- Map database covers major metropolitan areas in Canada and the 48 contiguous U.S. states.
- Coverage varies by market.
- Only available in certain areas. Includes a no-charge trial of three months.
- Estimated fuel consumption based on Government of Canada’s 5-cycle testing method. Your actual fuel consumption will vary based on driving habits and other factors – use for comparison only.

For more information on 5-cycle testing, visit <http://vehicles.nrcan.gc.ca>.

Coupe

ENGINE	LX	EX-T	TOURING
2.0-litre, 16-valve, Port Injection, DOHC, i-VTEC® 4-cylinder	•		
1.5-litre, 16-valve, Direct Injection, DOHC, turbocharged 4-cylinder		•	•
Horsepower @ rpm¹	158 @ 6500	174 @ 6000	174 @ 6000
Torque (lb.-ft. @ rpm)¹	138 @ 4200	162 @ 1700-5500	162 @ 1700-5500
Displacement (cc)	1996	1498	1498
Emissions rating	Tier 3 Bin 125	Tier 3 Bin 125	Tier 3 Bin 125
Bore and stroke (mm)	86 X 85.9	73 X 89.5	73 X 89.5
Compression ratio	10.8:1	10.6:1	10.6:1
Drive-by-Wire Throttle System™	•	•	•
Eco Assist™ system	•	•	•
Recommended fuel	Regular	Regular	Regular

DRIVETRAIN	LX	EX-T	TOURING
6-speed manual transmission (MT)	•	•	
Continuously variable transmission (CVT)	Available	Available	•
ECON mode button	•	•	•
Front-wheel drive	•	•	•
Steering wheel-mounted paddle shifters		CVT only	•

CHASSIS	LX	EX-T	TOURING
16" aluminum-alloy wheels	•		
17" aluminum-alloy wheels			•
17" aluminum-alloy wheels (aero design)		•	
Agile Handling Assist² (AHA)	•	•	•
All-season tires	P215/55 R16 93H	P215/50 R17 91H	P215/50 R17 91H
Capless fueling system	•	•	•
Variable Ratio Electric Power-Assisted Rack-and-Pinion Steering (EPS)	•	•	•
Electronic Parking Brake (EPB) with automatic brake hold	•	•	•
Front and rear stabilizer bars (mm)	25.0/16.0	25.5/16.0	25.5/16.0
Independent strut front suspension	•	•	•
Independent multi-link rear suspension	•	•	•
Power-assisted, ventilated front disc/solid rear disc brakes	•	•	•
Straight Driving Assist	•	•	•
Temporary spare tire	T125/80 D16 97M	T125/80 D16 97M	T125/80 D16 97M

ACTIVE SAFETY	LX	EX-T	TOURING
4-wheel Anti-lock Braking System² (ABS)	•	•	•
Brake Assist	•	•	•
Electronic Brake-force Distribution (EBD)	•	•	•
Collision Mitigation Braking System™² (CMBS*) (HS*)	Honda Sensing™ model	Honda Sensing™ model	•
Forward Collision Warning (FCW) system² (HS*)	Honda Sensing™ model	Honda Sensing™ model	•
Hill Start Assist²	•	•	•
Lane Departure Warning (LDW) system² (HS*)	Honda Sensing™ model	Honda Sensing™ model	•
LED daytime running lights	•	•	•
Road Departure Mitigation (RDM) system² (HS*)	Honda Sensing™ model	Honda Sensing™ model	•
Vehicle Stability Assist² (VSA®) with Traction Control	•	•	•

HS* = Feature is a component of the Honda Sensing™ suite of safety and driver assist features.

PASSIVE SAFETY	LX	EX-T	TOURING
3-point seat belts with front automatic tensioning system	•	•	•
Next-Generation Advanced Compatibility Engineering™ (ACE™) body structure	•	•	•
Dual-stage, multiple-threshold front airbags (SRS)	•	•	•
Side curtain airbags with rollover sensor system	•	•	•

Coupe

PASSIVE SAFETY (CONTINUED)	LX	EX-T	TOURING
SmartVent™ side airbags	•	•	•
HondaLink™ Assist Automatic Emergency Response System²,³,⁴	•	•	•
Lower Anchors and Tethers for Children (LATCH)	•	•	•

DRIVER ASSIST TECHNOLOGY	LX	EX-T	TOURING
Adaptive Cruise Control (ACC)² with Low-Speed Follow (HS*)	Honda Sensing™ model	Honda Sensing™ model	•
Honda LaneWatch™ blind spot display²		•	•
Lane Keeping Assist System (LKAS)² (HS*)	Honda Sensing™ model	Honda Sensing™ model	•

HS* = Feature is a component of the Honda Sensing™ suite of safety and driver assist features.

EXTERIOR	LX	EX-T	TOURING
Body-coloured bumpers	•	•	•
Body-coloured door handles	•	•	Chrome
Fog lights		•	•
Folding door mirrors	•	•	•
Front splash guards	•	•	•
Heated power door mirrors	Body-coloured	Body-coloured	Body-coloured with chrome accent

Intermittent windshield wipers	•		
LED front turn signal indicators			•
LED headlights (High and low beam)			With auto-on/off
LED taillights	•	•	•
Mirror-integrated LED turn signal indicators			•
Power moonroof with tilt feature		•	•
Projector-beam halogen headlights	With auto-on/off	With auto-on/off	
Rain-sensing windshield wipers			•
Rear window defroster	•	•	•
Shark fin antenna			•
Speed-sensing, variable intermittent windshield wipers		•	•
Taillight-integrated rear spoiler	•	•	•

COMFORT & CONVENIENCE	LX	EX-T	TOURING
12-volt power outlet	1	1	1
7" colour TFT centre meter display with Driver Information Interface	•	•	•
Acoustic windshield	•	•	•
Auto-dimming rearview mirror			•
Automatic climate control with air-filtration system	•	Dual-zone	Dual-zone
Cargo area light	•	•	•
Display Audio System² with Honda Satellite-Linked Navigation System™²,⁵ with bilingual Voice Recognition			•
Door pockets	•	•	•
Driver’s and front passenger’s vanity mirrors	•	Illuminated	Illuminated
Exterior temperature indicator	•	•	•
HandsFreeLink™-bilingual Bluetooth® wireless mobile phone interface²,³	•	•	•
Immobilizer theft-deterrent system	•	•	•
Maintenance Minder™ system	•	•	•
Map lights	•	•	•
Multi-angle rearview camera²	With dynamic guidelines	With dynamic guidelines	With dynamic guidelines
Multi-functional centre console storage	•	•	•
One-touch turn signals	•	•	•
Power windows with auto-up/down driver’s and passenger’s window	•	•	•
Power door locks	•	•	•
Proximity key entry system with pushbutton start		•	•
Remote engine starter		CVT only	•
Remote entry system with electronic trunk release	•		•
Security system	•	•	•
Steering wheel-mounted cruise control	•	•	•
Tilt and telescopic steering column	•	•	•
Walk-away door lock		•	•
Wireless charging			•

SEATING & TRIM	LX	EX-T	TOURING
60/40 split fold-down rear seatback	•	•	•
Driver’s seat with 6-way manual adjustment	•	•	•
Front passenger’s seat with 4-way manual adjustment	•	•	•
Floor mats	•	•	•
Heated front seats	•	•	•
Leather-trimmed seating surfaces			•
Leather-wrapped steering wheel		•	•

ENTERTAINMENT	LX	EX-T	TOURING
180-watt AM/FM audio system with MP3/Windows Media® Audio playback capability and 8 speakers	•	•	
452-watt AM/FM Premium audio system with MP3/Windows Media® Audio playback capability and 10 speakers including subwoofer			•
Apple CarPlay™²,³ / Android Auto™²,³	•	•	•
Bluetooth® Streaming Audio²,³	•	•	•
Display Audio System² with HondaLink™²,³	•	•	Including Navigation²,⁵
HD Radio™⁶			•
Illuminated steering wheel-mounted audio controls	With capacitive touch controls	With capacitive touch controls	With capacitive touch controls
Siri Eyes Free compatibility²,³	•	•	•
SiriusXM™²,⁷			•

Coupe

ENTERTAINMENT (CONTINUED)	LX	EX-T	TOURING
SMS text message ^{2,3} / E-mail function ^{2,3}	•	•	•
Speed-sensitive Volume Control (SVC)	•	•	•
USB device connector ³	2	2	2
Wi-Fi tethering ³	•	•	•

FUEL ECONOMY ⁸ (L/100 KM)	LX	EX-T	TOURING
Continuously variable transmission (City/Hwy/Combined)	7.8 / 6.0 / 7.0	7.4 / 5.6 / 6.6	7.4 / 5.6 / 6.6
Manual transmission (City/Hwy/Combined)	8.5 / 6.1 / 7.4	7.7 / 5.7 / 6.8	

DIMENSIONS	LX	EX-T	TOURING
Cargo volume (L)	343	343	337
Curb weight – MT/CVT (kg)	1251/1257	1287/1313	NA/1317
Fuel tank capacity (L)	46.9	46.9	46.9
Ground clearance – no-load/full-load (mm)	125/105	125/105	125/105
Headroom – front/rear (mm)	970/879	928/876	928/876
Height (mm)	1395	1395	
Hip room – front/rear (mm)	1374/1223	1374/1223	1374/1223
Legroom – front/rear (mm)	1074/912	1074/912	1074/912
Length (mm)	4492	4492	4492
Passenger volume (L)	2577	2509	2509
Shoulder room – front/rear (mm)	1446/1336	1446/1336	1446/1336
Track – front/rear (mm)	1547/1563	1547/1563	1547/1563
Turning radius (m) (curb-to-curb)	5.4	5.4	5.4
Wheelbase (mm)	2700	2700	2700
Width – including mirrors/mirrors folded (mm)	2076/1878	2087/1878	2087/1878

¹ Horsepower and torque calculations reflect SAE net, Rev. 08/04, SAE J1349 procedures.

² None of the features we describe are intended to replace the driver’s responsibility to exercise due care while driving. Drivers should not use handheld devices or operate certain vehicle features unless it is safe and legal to do so. Some features have technological limitations. For additional feature information, limitations and restrictions, please visit www.honda.ca/disclaimers and refer to the vehicle’s Owner’s Manual.

³ Only compatible with certain devices and operating systems. Cellular data and/or voice charges may apply, including roaming charges and/or other amounts charged by your wireless carrier.

⁴ Operation requires wireless mobile phone to be paired with the vehicle. Operation is dependent upon cellular data and/or voice connection availability and GPS satellite signal reception.

⁵ Map database covers major metropolitan areas in Canada and the 48 contiguous U.S. states.

⁶ Coverage varies by market.

⁷ Only available in certain areas. Includes a no-charge trial of three months.

⁸ Estimated fuel consumption based on Government of Canada’s 5-cycle testing method. Your actual fuel consumption will vary based on driving habits and other factors – use for comparison only.

For more information on 5-cycle testing, visit http://vehicles.nrcan.gc.ca.

Hatchback

ENGINE	LX	SPORT	SPORT TOURING
1.5-litre, 16-valve, Direct Injection, DOHC, turbocharged 4-cylinder	•	•	•
Horsepower @ rpm ¹	174 @ 5500 (MT) / 174 @ 6000 (CVT)	180 @ 5500 (MT) / 180 @ 6000 (CVT)	180 @ 5500 (MT) / 180 @ 6000 (CVT)
Torque (lb.-ft. @ rpm) ¹	167 @ 1800-5500 (MT) / 162 @ 1700-5500 (CVT)	177 @ 1900-5000 (MT) / 162 @ 1700-5500 (CVT)	177 @ 1900-5000 (MT) / 162 @ 1700-5500 (CVT)

Displacement (cc)	1498	1498	1498
Emissions rating	Tier 3 Bin 125	Tier 3 Bin 125	Tier 3 Bin 125
Bore and stroke (mm)	73 X 89.5	73 X 89.5	73 X 89.5
Compression ratio	10.6:1	10.6:1	10.6:1
Drive-by-Wire Throttle System™	•	•	•
Eco Assist™ system	•	•	•
Recommended fuel	Regular	Premium	Premium

DRIVETRAIN	LX	SPORT	SPORT TOURING
6-speed manual transmission (MT)	•	•	•
Continuously variable transmission (CVT)	Available	Available	Available
ECON mode button	•	•	•
Front-wheel drive	•	•	•
Steering wheel-mounted paddle shifters		CVT model	CVT model

CHASSIS	LX	SPORT	SPORT TOURING
16" aluminum-alloy wheels (aero design)	•		
18" aluminum-alloy wheels (dark)		•	•
Agile Handling Assist ³ (AHA)	•	•	•
All-season tires	P215/55 R16 93H	P235/40 R18 91W	P235/40 R18 91W
Capless fueling system	•	•	•
Variable Ratio Electric Power-Assisted Rack-and-Pinion Steering (EPS)	•	•	•
Electronic Parking Brake (EPB) with automatic brake hold	•	•	•
Front and rear stabilizer bars (mm)	25.5/16.0	25.5/16.0	25.5/16.0
Independent strut front suspension	•	•	•
Independent multi-link rear suspension	•	•	•
Power-assisted, ventilated front disc/solid rear disc brakes	•	•	•
Straight Driving Assist	•	•	•
Temporary spare tire	T125/80 D16 97M	T125/70 D17 98M	T125/70 D17 98M

ACTIVE SAFETY	LX	SPORT	SPORT TOURING
4-wheel Anti-lock Braking System ² (ABS)	•	•	•
Brake Assist	•	•	•
Electronic Brake-force Distribution (EBD)	•	•	•
Collision Mitigation Braking System™ ² (CMBS [®]) (HS*)	Available on CVT only	CVT only	•
Forward Collision Warning (FCW) system ² (HS*)	Available on CVT only	CVT only	•
Hill Start Assist ²	•	•	•
Lane Departure Warning (LDW) system ² (HS*)	Available on CVT only	CVT only	•
LED daytime running lights	•	•	•
Road Departure Mitigation (RDM) system ² (HS*)	Available on CVT only	CVT only	•
Vehicle Stability Assist ² (VSA [®]) with Traction Control	•	•	•

HS* = Feature is a component of the Honda Sensing™ suite of safety and driver assist features.

Hatchback

PASSIVE SAFETY	LX	SPORT	SPORT TOURING
3-point seat belts with front automatic tensioning system	•	•	•
Next-Generation Advanced Compatibility Engineering™ (ACE™) body structure	•	•	•
Childproof rear door locks	•	•	•
Dual-stage, multiple-threshold front airbags (SRS)	•	•	•
Front height-adjustable seat belt anchors	•	•	•
Side curtain airbags with rollover sensor system	•	•	•
SmartVent™ side airbags	•	•	•
HondaLink™ Assist Automatic Emergency Response System ^{2,3,4}	•	•	•
Lower Anchors and Tethers for Children (LATCH)	•	•	•

DRIVER ASSIST TECHNOLOGY	LX	SPORT	SPORT TOURING
Adaptive Cruise Control (ACC) ² with Low-Speed Follow (HS*)	Available on CVT only	CVT only	CVT only
Adaptive Cruise Control (ACC) ² (HS*)			MT only
Auto high beam	Honda Sensing™ trims only	Honda Sensing™ trims only	•
Honda LaneWatch™ blind spot display ²		•	•
Lane Keeping Assist System (LKAS) ² (HS*)	Available on CVT only	CVT only	•
HS* = Feature is a component of the Honda Sensing™ suite of safety and driver assist features.			

EXTERIOR	LX	SPORT	SPORT TOURING
Body-coloured bumpers	•	•	•
Body-coloured door handles	•	•	•
Body-coloured rear roofline spoiler	•	•	•
Dual centre exhaust with chrome finisher		•	•
Fog lights		•	•
Folding door mirrors	•	•	•
Front splash guards	•		
Heated power door mirrors	Body-coloured	Body-coloured	Body-coloured
Intermittent windshield wipers	•		
Intermittent rear window wiper/washer	•	•	•
LED front turn signal indicators			•
LED headlights (High and low beam)			With auto-on/off
LED taillights	•	•	•
Mirror-integrated LED turn signal indicators			•
Power moonroof with tilt feature		•	•
Projector-beam halogen headlights	With auto-on/off	With auto-on/off	
Rain-sensing windshield wipers			•
Rear window defroster	•	•	•
Shark fin antenna	•	•	•
Skirt package (front, side and rear)		•	•
Speed-sensing, variable intermittent windshield wipers		•	•

COMFORT & CONVENIENCE	LX	SPORT	SPORT TOURING
12-volt power outlet	1	1	1
7" colour TFT centre meter display with Driver Information Interface	•	•	•
Acoustic windshield	•	•	•
Auto-dimming rearview mirror			•
Automatic climate control with air-filtration system	•	Dual-zone	Dual-zone
Cargo area light	•	•	•
Display Audio System ² with Honda Satellite-Linked Navigation System™ ^{2,5} with bilingual Voice Recognition			•
Driver’s and front passenger’s vanity mirrors	•	Illuminated	Illuminated
Exterior temperature indicator	•	•	•
Front and rear door pockets	•	•	•
HandsFreeLink™-bilingual Bluetooth [®] wireless mobile phone interface ^{2,3}	•	•	•
Immobilizer theft-deterrent system	•	•	•
Maintenance Minder™ system	•	•	•
Map lights	•	•	•
Multi-angle rearview camera ²	With dynamic guidelines	With dynamic guidelines	With dynamic guidelines
Multi-functional centre console storage	•	•	•
One-touch turn signals	•	•	•
Passenger-side seatback pocket		•	•
Power windows with auto-up/down driver’s and passenger’s window	•	•	•
Power door locks	•	•	•
Proximity key entry system with pushbutton start		•	•
Rear armrest with cupholders	•	•	•
Rear-seat heater ducts	•	•	•
Remote engine starter		CVT only	CVT only
Remote entry system with electronic trunk release	•		
Retractable cargo cover	•	•	•
Security system	•	•	•
Steering wheel-mounted cruise control	•	•	•
Textured aluminum pedals		•	•
Tilt and telescopic steering column	•	•	•
Walk-away door lock		•	•
Wireless charging			•

SEATING & TRIM	LX	SPORT	SPORT TOURING
60/40 split fold-down rear seatback	•	•	•
Driver’s seat with 6-way manual adjustment	•	•	
Driver’s seat with 8-way power adjustment			•
Front passenger’s seat with 4-way manual adjustment	•	•	
Front passenger’s seat with 4-way power adjustment			•
Floor mats	•	•	•

Hatchback

SEATING & TRIM (CONTINUED)	LX	SPORT	SPORT TOURING
Heated front seats	•	•	•
Heated rear seats			•
Leather-trimmed seating surfaces			•
Leather-wrapped steering wheel		•	•
ENTERTAINMENT	LX	SPORT	SPORT TOURING
180-watt AM/FM audio system with MP3/Windows Media® Audio playback capability and 8 speakers	•	•	
542-watt AM/FM Premium audio system with MP3/Windows Media® Audio playback capability and 12 speakers including subwoofer			•
Apple CarPlay™ ^{2,3} / Android Auto™ ^{2,3}	•	•	•
Bluetooth® Streaming Audio ^{2,3}	•	•	•
Display Audio System ² with HondaLink™ ^{2,3}	•	•	Including Navigation ^{2,5}
HD Radio™ ⁶			•
Illuminated steering wheel-mounted audio controls	•	•	•
Siri Eyes Free compatibility ^{2,3}	•	•	•
SiriusXM™ ^{2,7}			•
SMS text message ^{2,3} / E-mail function ^{2,3}	•	•	•
Speed-sensitive Volume Control (SVC)	•	•	•
USB device connector ³	2	2	2
Wi-Fi tethering ³	•	•	•

FUEL ECONOMY ⁸ (L/100 KM)	LX	SPORT	SPORT TOURING
Continuously variable transmission (City/Hwy/Combined)	7.7 / 6.0 / 6.9	7.9 / 6.6 / 7.3	7.9 / 6.6 / 7.3
Manual transmission (City/Hwy/Combined)	8.0 / 6.2 / 7.2	8.0 / 6.2 / 7.2	8.0 / 6.2 / 7.2

DIMENSIONS	LX	SPORT	SPORT TOURING
Cargo volume – rear seats up/down ⁹ (L)	727.7/1308.2	727.7/1308.2	727.7/1308.2
Curb weight – MT/CVT (kg)	1290/1321/1326 (Honda Sensing™ model.)	1321/1351	1340/1370
Fuel tank capacity (L)	46.9	46.9	46.9
Ground clearance – no-load/full-load (mm)	133/109	128/109	128/109
Headroom – front/rear (mm)	998/950	954/949	954/949
Height (mm)	1434	1429	1429
Hip room – front/rear (mm)	1364/1240	1364/1240	1364/1240
Legroom – front/rear (mm)	1074/916	1074/916	1074/916
Length (mm)	4519	4519	4519
Passenger volume (L)	2752	2684	2684
Shoulder room – front/rear (mm)	1448/1398	1446/1398	1446/1398
Track – front/rear (mm)	1547/1563	1537/1553	1537/1553
Turning radius (m) (curb-to-curb)	5.4	5.7	5.7
Wheelbase (mm)	2700	2700	2700
Width – including mirrors/mirrors folded (mm)	2076/1878	2087/1878	2087/1878

Sedan Trims

CIVIC DX SEDAN
<p>KEY FEATURES:</p> <ul style="list-style-type: none">158-hp¹, 2.0-litre, 16-valve, Port Injection, DOHC, i-VTEC® 4-cylinder engine 12-volt power outlet 16" steel wheels with full covers 160-watt AM/FM audio system with MP3/Windows Media® Audio playback capability and 8 speakers 4-wheel Anti-lock Braking System² (ABS) 6-speed manual transmission (MT) Bluetooth® Streaming Audio^{2,3} Body-coloured door handles Brake Assist Drive-by-Wire Throttle System™ Driver's and front passenger's vanity mirrors Driver's seat with 6-way manual adjustment Dual-stage, multiple-threshold front airbags (SRS) ECON mode button and Eco Assist™ system Electronic Brake-force Distribution (EBD) Exterior temperature indicator Fold-down rear seatback Folding side mirrors Front splash guards HandsFreeLink™-bilingual Bluetooth® wireless mobile phone interface^{2,3} Heated power door mirrors Independent multi-link rear suspension Independent strut front suspension Lower Anchors and Tethers for Children (LATCH) Map lights Multi-angle rearview camera² Multi-functional centre console storage Next-Generation Advanced Compatibility Engineering™ (ACE™) body structure Power door locks Power windows with auto-up/down driver's and passenger's window Power-assisted, ventilated front disc/solid rear disc brakes Projector-beam halogen headlights with auto-off Remote entry system with electronic trunk release Security system Side curtain airbags with rollover sensor system Siri Eyes Free compatibility^{2,3} SmartVent™ side airbags Tilt and telescopic steering column USB device connector³ Variable Ratio Electric Power-Assisted Rack-and-Pinion Steering (EPS) Vehicle Stability Assist² (VSA®) with Traction Control

CIVIC LX SEDAN
<p>ADDS TO OR REPLACES DX FEATURES:</p> <ul style="list-style-type: none">7" colour TFT centre meter display with Driver Information Interface 180-watt AM/FM audio system with MP3/Windows Media® Audio playback capability and 8 speakers 60/40 split fold-down rear seatback Apple CarPlay™^{2,3} / Android Auto™^{2,3} Automatic climate control with air conditioning and air-filtration system Available continuously variable transmission (CVT) Body-coloured door mirrors Display Audio System² with HondaLink™^{2,3} Heated front seats HondaLink™ Assist Automatic Emergency Response System^{2,3,4} Illuminated steering wheel-mounted audio controls with capacitive touch controls Multi-angle rearview camera² with dynamic guidelines Projector-beam halogen headlights with auto-on/off Rear armrest with cupholders SMS text message^{2,3} / E-mail function^{2,3} Steering wheel-mounted cruise control USB device connector³ (2) Wi-Fi tethering³ Available Honda Sensing™ Technologies (CVT)

CIVIC EX SEDAN
<p>ADDS TO OR REPLACES LX FEATURES:</p> <ul style="list-style-type: none">16" aluminum-alloy wheels Continuously variable transmission (CVT) Dual-zone automatic climate control with air-filtration system Honda LaneWatch™ blind spot display² Illuminated driver's and front passenger's vanity mirrors Passenger-side seatback pocket One-touch power moonroof with tilt feature Proximity key entry system with pushbutton start Remote engine starter Speed-sensing, variable intermittent windshield wipers Honda Sensing™ Technologies

CIVIC EX-T SEDAN
<p>ADDS TO OR REPLACES EX FEATURES:</p> <ul style="list-style-type: none">174-hp¹, 1.5-litre, 16-valve, Direct Injection, DOHC, turbocharged 4-cylinder engine 17" aluminum-alloy wheels (aero design) Deck lid spoiler Fog lights Leather-wrapped steering wheel

CIVIC TOURING SEDAN
<p>ADDS TO OR REPLACES EX-T FEATURES:</p> <ul style="list-style-type: none">17" aluminum-alloy wheels 452-watt AM/FM Premium audio system with MP3/Windows Media® Audio playback capability and 10 speakers including subwoofer Auto-dimming rearview mirror Chrome door handles Front passenger's seat with 4-way power adjustment Display Audio System² with Honda Satellite-Linked Navigation System™^{2,5} with bilingual Voice Recognition Driver's seat with 8-way power adjustment HD Radio™⁶ Heated rear seats Leather-trimmed seating surfaces LED headlights (high and low beam) with auto-on/off Mirror-integrated LED turn signal indicators Rain-sensing windshield wipers SiriusXM™^{2,7} Wireless charging

HONDA SENSING™ TECHNOLOGIES
<p>AVAILABLE ON LX (CVT), STANDARD ON EX, EX-T AND TOURING</p> <ul style="list-style-type: none">Collision Mitigation Braking System™² (CMBS®) Forward Collision Warning (FCW) system² Lane Departure Warning (LDW) system² Road Departure Mitigation (RDM) system² Adaptive Cruise Control (ACC)² with Low-Speed Follow Lane Keeping Assist System (LKAS)²

^[1] Horsepower and torque calculations reflect SAE net, Rev. 08/04, SAE J1349 procedures

^[2] None of the features we describe are intended to replace the driver's responsibility to exercise due care while driving. Drivers should not use handheld devices or operate certain vehicle features unless it is safe and legal to do so. Some features have technological limitations. For additional feature information, limitations and restrictions, please visit www.honda.ca/disclaimers and refer to the vehicle's Owner's Manual.

^[3] Only compatible with certain devices and operating systems. Cellular data and/or voice charges may apply, including roaming charges and/or other amounts charged by your wireless carrier.

^[4] Operation requires wireless mobile phone to be paired with the vehicle. Operation is dependent upon cellular data and/or voice connection availability and GPS satellite signal reception.

^[5] Map database covers major metropolitan areas in Canada and the 48 contiguous U.S. states.

^[6] Coverage varies by market.

^[7] Only available in certain areas. Includes a no-charge trial of three months.

^[8] Estimated fuel consumption based on Government of Canada's 5-cycle testing method. Your actual fuel consumption will vary based on driving habits and other factors – use for comparison only.

^[9] For more information on 5-cycle testing, visit http://vehicles.nrcan.gc.ca.

^[10] Based on SAE J1100 cargo volume measurement standard, plus rear footwell space and front seats moved forward.

^[1] Horsepower and torque calculations reflect SAE net, Rev. 08/04, SAE J1349 procedures.

^[2] None of the features we describe are intended to replace the driver's responsibility to exercise due care while driving. Drivers should not use handheld devices or operate certain vehicle features unless it is safe and legal to do so. Some features have technological limitations. For additional feature information, limitations and restrictions, please visit www.honda.ca/disclaimers or refer to the vehicle's Owner's Manual.

^[3] Only compatible with certain devices and operating systems. Cellular data and/or voice charges may apply, including roaming charges and/or other amounts charged by your wireless carrier.

^[4] Operation requires wireless mobile phone to be paired with the vehicle. Operation is dependent upon cellular data and/or voice connection availability and GPS satellite signal reception.

^[5] Map database covers major metropolitan areas in Canada and 48 contiguous U.S. states.

^[6] Coverage varies by market.

^[7] Only available in certain areas. Includes a no-charge trial of three months.

Coupe Trims

CIVIC LX COUPE

KEY FEATURES:

- 158-hp¹, 2.0-litre, 16-valve, Port Injection, DOHC, i-VTEC[®] 4-cylinder engine
- 7" colour TFT centre meter display with Driver Information Interface
- 12-volt power outlet
- 16" aluminum-alloy wheels
- 60/40 split fold-down rear seatback
- 180-watt AM/FM audio system with MP3/Windows Media[®] Audio playback capability and 8 speakers
- 4-wheel Anti-lock Braking System² (ABS)
- 6-speed manual transmission (MT)
- Available continuously variable transmission (CVT)
- Apple CarPlay^{™2,3} / Android Auto^{™2,3}
- Automatic climate control with air-filtration system
- Bluetooth[®] Streaming Audio^{2,3}
- Body-coloured door handles
- Body-coloured heated power door mirrors
- Brake Assist
- Display Audio System² with HondaLink^{™2,3}
- Drive-by-Wire Throttle System[™]
- Driver's and front passenger's vanity mirrors
- Driver's seat with 6-way manual adjustment
- Dual-stage, multiple-threshold front airbags (SRS)
- ECON mode button and Eco Assist[™] system
- Electronic Brake-force Distribution (EBD)
- Exterior temperature indicator
- Folding door mirrors
- Front splash guards
- HandsFreeLink[™]-bilingual Bluetooth[®] wireless mobile phone interface^{2,3}
- Heated front seats
- HondaLink[™] Assist Automatic Emergency Response System^{2,3,4}
- Illuminated steering wheel-mounted audio controls with capacitive touch controls
- Independent multi-link rear suspension
- Independent strut front suspension
- Lower Anchors and Tethers for Children (LATCH)
- Map lights
- Multi-angle rearview camera² with dynamic guidelines
- Multi-functional centre console storage
- Next-Generation Advanced Compatibility Engineering[™] (ACE[™]) body structure
- Power door locks
- Power windows with auto-up/down driver's and passenger's window
- Power-assisted, ventilated front disc/solid rear disc brakes
- Projector-beam halogen headlights with auto-on/off
- Remote entry system with electronic trunk release
- Security system
- Side curtain airbags with rollover sensor system
- Siri Eyes Free compatibility^{2,3}
- SmartVent[™] side airbags
- SMS text message^{2,3} / E-mail function^{2,3}
- Steering wheel-mounted cruise control
- Taillight-integrated rear spoiler
- Tilt and telescopic steering column
- USB device connector³ (2)
- Variable Ratio Electric Power-Assisted Rack-and-Pinion Steering (EPS)
- Vehicle Stability Assist² (VSA[®]) with Traction Control
- Wi-Fi tethering³
- Available Honda Sensing[™] Technologies (CVT)

CIVIC EX-T COUPE

ADDS TO OR REPLACES LX FEATURES:

- 174-hp¹, 1.5-litre, 16-valve, Direct Injection, DOHC, turbocharged 4-cylinder engine
- 17" aluminum-alloy wheels (aero design)
- 6-speed manual transmission (MT)
- Available continuously variable transmission (CVT)
- Dual-zone automatic climate control with air-filtration system
- Fog lights
- Honda LaneWatch[™] blind spot display²
- Illuminated driver's and front passenger's vanity mirrors
- Leather-wrapped steering wheel
- Power moonroof with tilt feature
- Proximity key entry system with pushbutton start
- Remote engine starter (CVT)
- Speed-sensing, variable intermittent windshield wipers
- Steering wheel-mounted paddle shifters (CVT)
- Available Honda Sensing[™] Technologies

CIVIC TOURING COUPE

ADDS TO OR REPLACES EX-T FEATURES:

- 17" aluminum-alloy wheels
- 452-watt AM/FM Premium audio system with MP3/Windows Media[®] Audio playback capability and 10 speakers including subwoofer
- Auto-dimming rearview mirror
- Chrome door handles
- Display Audio System² with Honda Satellite-Linked Navigation System^{™2,5} with bilingual Voice Recognition
- HD Radio^{™6}
- Leather-trimmed seating surfaces
- LED headlights (high and low beam) with auto-on/off
- Mirror-integrated LED turn signal indicators
- Rain-sensing windshield wipers
- SiriusXM^{™2,7}
- Wireless charging

HONDA SENSING[™] TECHNOLOGIES

STANDARD ON LX (CVT), EX-T (CVT) AND TOURING

- Collision Mitigation Braking System^{™2} (CMBS[®])
- Forward Collision Warning (FCW) system²
- Lane Departure Warning (LDW) system²
- Road Departure Mitigation (RDM) system²
- Adaptive Cruise Control (ACC)² with Low-Speed Follow
- Lane Keeping Assist System (LKAS)²

Hatchback Trims

CIVIC LX HATCHBACK

KEY FEATURES:

- 174-hp¹, 1.5-litre, 16-valve, Direct Injection, DOHC, turbocharged 4-cylinder engine
- 7" colour TFT centre meter display with Driver Information Interface
- 12-volt power outlet
- 16" aluminum-alloy wheels (aero design)
- 60/40 split fold-down rear seatback
- 180-watt AM/FM audio system with MP3/Windows Media[®] Audio playback capability and 8 speakers
- 4-wheel Anti-lock Braking System² (ABS)
- 6-speed manual transmission (MT)
- Available continuously variable transmission (CVT)
- Apple CarPlay^{™2,3} / Android Auto^{™2,3}
- Automatic climate control with air-filtration system
- Bluetooth[®] Streaming Audio^{2,3}
- Body-coloured door handles
- Body-coloured heated power door mirrors
- Body-coloured rear roofline spoiler
- Brake Assist
- Display Audio System² with HondaLink^{™2,3}
- Drive-by-Wire Throttle System[™]
- Driver's and front passenger's vanity mirrors
- Driver's seat with 6-way manual adjustment
- Dual-stage, multiple-threshold front airbags (SRS)
- ECON mode button and Eco Assist[™] system
- Electronic Brake-force Distribution (EBD)
- Exterior temperature indicator
- Folding door mirrors
- Front splash guards
- HandsFreeLink[™]-bilingual Bluetooth[®] wireless mobile phone interface^{2,3}
- Heated front seats
- HondaLink[™] Assist Automatic Emergency Response System^{2,3,4}
- Illuminated steering wheel-mounted audio controls
- Independent multi-link rear suspension
- Independent strut front suspension
- Intermittent rear window wiper/washer
- Lower Anchors and Tethers for Children (LATCH)
- Map lights
- Multi-angle rearview camera² with dynamic guidelines
- Multi-functional centre console storage
- Next-Generation Advanced Compatibility Engineering[™] (ACE[™]) body structure
- Power door locks
- Power windows with auto-up/down driver's and passenger's window
- Power-assisted, ventilated front disc/solid rear disc brakes
- Projector-beam halogen headlights with auto-on/off
- Remote entry system with electronic trunk release
- Retractable cargo cover
- Security system
- Side curtain airbags with rollover sensor system
- Siri Eyes Free compatibility^{2,3}
- SmartVent[™] side airbags
- SMS text message^{2,3} / E-mail function^{2,3}
- Steering wheel-mounted cruise control
- Tilt and telescopic steering column
- USB device connector³ (2)
- Variable Ratio Electric Power-Assisted Rack-and-Pinion Steering (EPS)
- Vehicle Stability Assist² (VSA[®]) with Traction Control
- Wi-Fi tethering³
- Available Honda Sensing[™] Technologies (CVT)
- Available auto high beam (standard on Honda Sensing[™] trims)

CIVIC SPORT HATCHBACK

ADDS TO OR REPLACES LX FEATURES:

- 180-hp¹, 1.5-litre, 16-valve, Direct Injection, DOHC, turbocharged 4-cylinder engine
- 18" aluminum-alloy wheels (dark)
- 6-speed manual transmission (MT)
- Available continuously variable transmission (CVT)
- Available auto high beam (standard on Honda Sensing[™] trims)
- Dual-zone automatic climate control with air-filtration system
- Dual centre exhaust with chrome finisher
- Fog lights
- Honda LaneWatch[™] blind spot display²
- Illuminated driver's and front passenger's vanity mirrors
- Leather-wrapped steering wheel
- Power moonroof with tilt feature
- Proximity key entry system with pushbutton start
- Remote engine starter (CVT)
- Skirt package (Front, Side and Rear)
- Speed-sensing, variable intermittent windshield wipers
- Steering wheel-mounted paddle shifters (CVT)
- Textured aluminum pedals
- Available Honda Sensing[™] Technologies (CVT)

CIVIC SPORT TOURING HATCHBACK

ADDS TO OR REPLACES SPORT FEATURES:

- 542-watt AM/FM Premium audio system with MP3/Windows Media[®] Audio playback capability and 12 speakers including subwoofer
- Auto-dimming rearview mirror
- Auto high beam
- 6-speed manual transmission (MT)
- Available continuously variable transmission (CVT)
- Display Audio System² with Honda Satellite-Linked Navigation System^{™2,5} with bilingual Voice Recognition
- Driver's seat with 8-way power adjustment
- Front passenger's seat with 4-way power adjustment
- Heated rear seats
- HD Radio^{™6}
- Leather-trimmed seating surfaces
- LED headlights (high and low beam) with auto-on/off
- Mirror-integrated LED turn signal indicators
- Rain-sensing windshield wipers
- SiriusXM^{™2,7}
- Wireless charging
- Honda Sensing[™] Technologies

1. Horsepower and torque calculations reflect SAE net, Rev. 08/04, SAE J1349 procedures.

2. None of the features we describe are intended to replace the driver's responsibility to exercise due care while driving. Drivers should not use handheld devices or operate certain vehicle features unless it is safe and legal to do so. Some features have technological limitations.

For additional feature information, limitations and restrictions, please visit www.honda.ca/disclaimers or refer to the vehicle's Owner's Manual.

3. Only compatible with certain devices and operating systems. Cellular data and/or voice charges may apply, including roaming charges and/or other amounts charged by your wireless carrier.

4. Operation requires wireless mobile phone to be paired with the vehicle. Operation is dependent upon cellular data and/or voice connection availability and GPS satellite signal reception.

5. Map database covers major metropolitan areas in Canada and 48 contiguous U.S. states.

6. Coverage varies by market.

7. Only available in certain areas. Includes a no-charge trial of three months.

1. Horsepower and torque calculations reflect net, Rev. 08/04, SAE J1349 procedures.

2. None of the features we describe are intended to replace the driver's responsibility to exercise due care while driving. Drivers should not use handheld devices or operate certain vehicle features unless it is safe and legal to do so. Some features have technological limitations. For additional feature information, limitations and restrictions, please visit www.honda.ca/disclaimers or refer to the vehicle's Owner's Manual.

3. Only compatible with certain devices and operating systems. Cellular data and/or voice charges may apply, including roaming charges and/or other amounts charged by your wireless carrier.

4. Operation requires wireless mobile phone to be paired with the vehicle. Operation is dependent upon cellular data and/or voice connection availability and GPS satellite signal reception.

5. Map database covers major metropolitan areas in Canada and 48 contiguous U.S. states.

6. Coverage varies by market.

7. Only available in certain areas. Includes a no-charge trial of three months.

Sedan Exterior & Interior Colours

CIVIC SEDAN	DX	LX	EX	EX-T	TOURING
Crystal Black Pearl	Black Fabric	Black Fabric	Black Fabric	Black Fabric	Black or Ivory Leather
Modern Steel Metallic	Black Fabric	Black Fabric	Black Fabric	Black Fabric	Black Leather
Aegean Blue Metallic		Black Fabric*	Black Fabric	Black Fabric	Black Leather
Lunar Silver Metallic		Black Fabric**	Black Fabric	Black Fabric	Black Leather
White Orchid Pearl			Black Fabric	Black Fabric	Black Leather
Rallye Red			Black Fabric	Black Fabric	
Taffeta White	Black Fabric	Black Fabric			
Burgundy Night Pearl					Black Leather

*Non Honda Sensing™ trims.
**Non Honda Sensing™ CVT trims.

Coupe Exterior & Interior Colours

CIVIC COUPE	LX	EX-T	TOURING
Crystal Black Pearl	Grey Fabric	Grey Fabric	Grey Leather
Aegean Blue Metallic	Grey Fabric	Grey Fabric	Grey Leather
Rallye Red	Grey Fabric	Grey Fabric	Grey Leather
Modern Steel Metallic		Grey Fabric	Grey Leather
Energy Green Pearl		Grey Fabric	Grey Leather
White Orchid Pearl		Grey Fabric	Grey Leather
Taffeta White	Grey Fabric		

Hatchback Exterior & Interior Colours

CIVIC HATCHBACK	LX	SPORT	SPORT TOURING
White Orchid Pearl	Black Fabric	Black Fabric	Black Leather
Crystal Black Pearl	Black Fabric	Black Fabric	Black Leather
Lunar Silver Metallic	Black Fabric*	Black Fabric*	Black Leather*
Aegean Blue Metallic	Black Fabric**	Black Fabric	Black Leather
Polished Metal Metallic	Black Fabric	Black Fabric	
Rallye Red		Black Fabric	Black Leather
Sonic Grey Pearl			Black Leather

*CVT model only.
** Excludes Honda Sensing™ model.

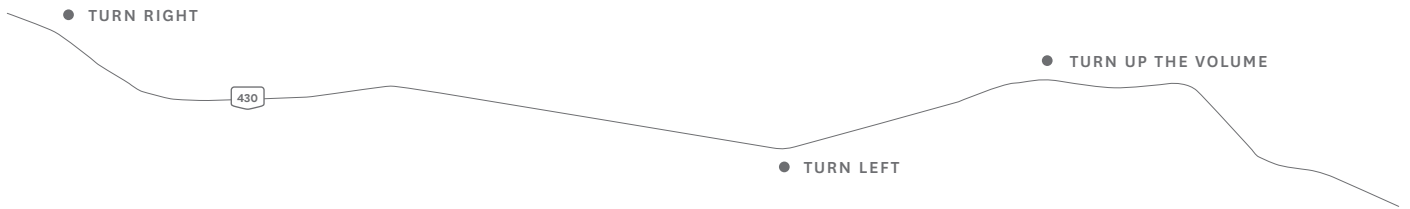
2017 Civic Si



Life is about compromises. Except when it's not. Sometimes you just have to put your foot down and feel the rush. That's fun. That's Civic Si.

The Civic Si sports sharp looks to match its fierce personality. A bold, gloss black front grille, rear wing spoiler, 18" aluminum-alloy wheels and centre exhaust finisher put raceway style onto your driveway. Light up the road with attractive LED daytime running lights, LED headlights with auto-on/off and LED taillights. Or let in some extra light with the one-touch power moonroof with tilt function.

Inside, the performance-driven looks don't fade away. Sport Si front seats, aluminum shift knob, aluminum-trimmed sport pedals and a leather-wrapped steering wheel feel as good as they look. And while your passengers won't be able to share the fun of driving your Civic Si, they'll enjoy the comfort of the heated front and rear seats (Sedan only) and dual-zone automatic climate control.





Heated front seats



18" aluminum-alloy wheels



Rear wing spoiler and centre exhaust finisher



Short-throw 6-speed manual transmission



Available all-season floor mats (high wall)



Available door sill trim, illuminated



Trims

SEDAN/COUPE

KEY FEATURES:

- 205-hp,¹ 1.5-litre, 16-valve, Direct Injection, DOHC, turbocharged 4-cylinder engine with 192 lb.-ft. of torque @ 2100-5000 rpm¹
- 18" aluminum-alloy wheels
- 6-speed manual transmission (MT)
- Aluminum-trimmed sport pedals
- Apple CarPlay^{TM2,3}/Android Auto^{TM2,3}
- Centre exhaust finisher
- Display Audio System² with Honda Satellite-Linked Navigation System^{TM2,4} with bilingual Voice Recognition
- Helical limited slip differential
- Honda LaneWatchTM blind spot display²
- LED headlights (High and low beam)
- One-touch power moonroof with tilt feature
- Rear wing spoiler
- Sport mode button

1. Horsepower and torque calculations reflect SAE net, Rev. 08/04, SAE J1349 procedures.
2. None of the features we describe are intended to replace the driver's responsibility to exercise due care while driving. Drivers should not use handheld devices or operate certain vehicle features unless it is safe and legal to do so. Some features have technological limitations. For additional feature information, limitations and restrictions, please visit www.honda.ca/disclaimers and refer to the vehicle's Owner's Manual.
3. Only compatible with certain devices and operating systems. Cellular data and/or voice charges may apply, including roaming charges and/or other amounts charged by your wireless carrier.
4. Map database covers major metropolitan areas in Canada and the 48 contiguous U.S. states.

Exterior & Interior Colours

CIVIC Si	SEDAN	COUPE
Aegean Blue Metallic	Black Fabric	Black Fabric
Crystal Black Pearl	Black Fabric	Black Fabric
Energy Green Pearl		Black Fabric
Modern Steel Metallic	Black Fabric	Black Fabric
Rallye Red	Black Fabric	Black Fabric
White Orchid Pearl	Black Fabric	Black Fabric