

2018 Accord Hybrid

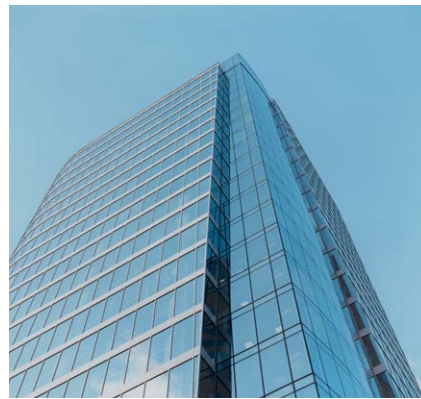
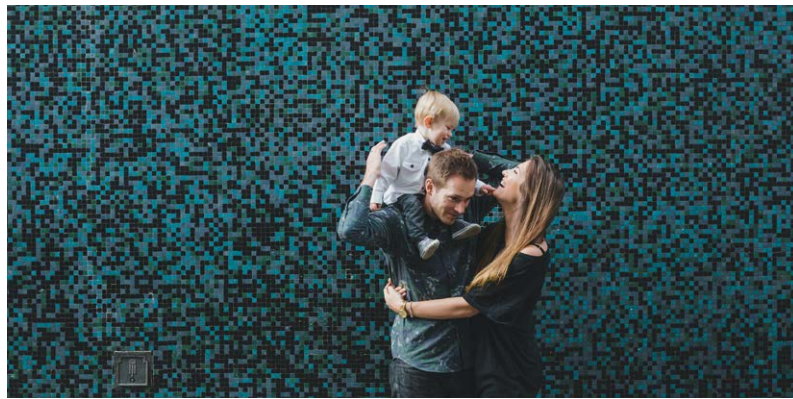




**Success is a funny thing.
Once you achieve your goal,
there's something new to
accomplish. So, for those
driven to reach beyond
their best: reach no further.**

Exterior 02
Interior 03
Accessories 04
Performance & Efficiency 05
Technology 06

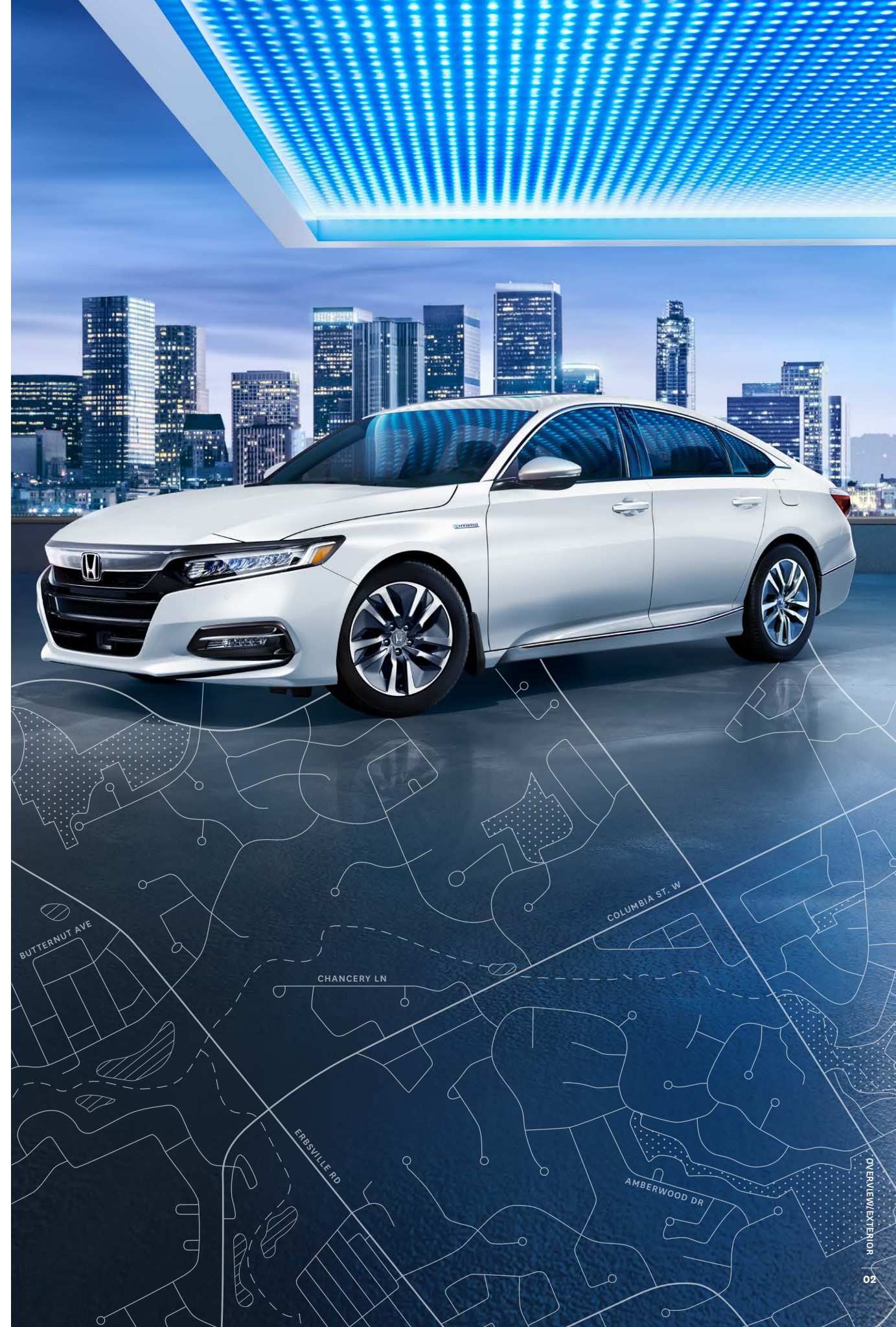
Honda Sensing™ Technologies 07
The Power of Dreams 08
Warranty 09
Colours & Trims 10



 LED TAILLIGHTS

The smartest Accord yet.

Brains never looked so brawny. From style to technology to performance, the 2018 Accord Hybrid packs a mighty (and efficient) punch. The LED taillights, brake lights and fog lights as well as the LED headlights with available auto-on/off for low and high beam are designed to be admired and engineered to better light the road ahead, helping you arrive safely and in style. When it's time to get moving, the 17" aluminum-alloy wheels hit that sweet spot between uncompromising style and enviable performance, while the available one-touch power moonroof with tilt feature opens up a whole new driving experience. If you're hoping to blend into your surroundings, the Accord Hybrid apologizes in advance.





 FULL CARGO SPACE

Step into luxury.

When your car looks this good, it's hard not to brag. Once seated, refined, luxurious features surround you, from the available heated leather-wrapped steering wheel to the available perforated leather-trimmed seating surfaces. Speaking of seats, did we mention the heated front seats and available heated rear outboard position seats? To top it all off, the decoration panel adds a unique, authentic sophistication to the cockpit, while the proximity key entry system with pushbutton start and remote engine starter means the Accord Hybrid is ready before you are.

And who says hybrid vehicles lack space? With an expansive 473 litres of cargo volume, feel free to pack much more than just the bare essentials, while the 60/40 split fold-down rear seatback provides abundant cargo space and even more convenience. Don't be shy. Say hello to luxury.

Key Features

60/40 split fold-down rear seatback

Heated front seats

Available heated rear seats (outboard positions only)

Available heated leather-wrapped steering wheel

Available ventilated front seats

Accessorize your Accord Hybrid.



ALL-SEASON FLOOR MATS,
HIGH WALL



DOOR VISORS



REAR DECK LID SPOILER



19" ALLOY WHEEL - GLINT BLACK



FRONT GRILLE - BLACK CHROME



DOOR SILL TRIM, ILLUMINATED



BODY SIDE MOULDING



PUDDLE LIGHT

Other Accessories Available

- Wireless charger
- Front fender garnish
- Hood edge deflector
- Trunk drawer
- Trunk Tray

Accessories and packages are subject to inventory availability.



Smart meets sport.

When it comes to efficiency, the Accord Hybrid can be summed up in five words: top-class fuel economy ratings. But why stop there? The innovative third-generation two-motor hybrid powertrain proves the Accord Hybrid is not joking around. The 2.0-litre, 16-valve, DOHC, 4-cylinder Atkinson cycle engine delivers power and versatility without compromise, while the Electric-Continuously Variable Transmission (E-CVT) system manages interactions between the two electric motors and the gasoline engine, meaning the Accord Hybrid draws from the fuel tank only when needed.

For a more hands-on driving experience, engage the Sport Drive button to apply dynamic handling, or switch things up with EV Drive for a fully electric drive. Want to help conserve fuel? ECON mode has your back. For even more efficiency over short distances, engage the steering wheel-mounted deceleration paddle selectors, which let you control the rate of deceleration by simulating engine braking, which helps to recharge the battery. If that's not enough control, the available Adaptive Damper System lets you adjust the dampening force for a truly comfortable drive. No matter the road, the Accord Hybrid is always ready.

Key Features

Electric-Continuously Variable Transmission (E-CVT)

EV and Sport Drive button

Steering wheel-mounted deceleration paddle selectors

Available Adaptive Damper System





AVAILABLE HEAD-UP DISPLAY (HUD)



APPLE CARPLAY™1,2/ANDROID AUTO™1,2



AVAILABLE DISPLAY AUDIO SYSTEM¹ WITH HONDA SATELLITE-LINKED NAVIGATION SYSTEM™1,3 AND BILINGUAL VOICE RECOGNITION

Intelligence redefined.

Get ready for a whole new experience with the most technologically advanced Accord ever built. With Apple CarPlay™1,2 and Android Auto™1,2, easily connect your compatible smartphone to use on the 8" Display Audio System¹. On the same screen, display your route with the available Honda Satellite-Linked Navigation System™2,3 with bilingual Voice Recognition. These features help make your drive more convenient, from planning road trips to staying in touch with family and friends.

But the tech doesn't stop there. The multi-angle rearview camera¹ with dynamic guidelines is engineered to have your back, while the available head-up display (HUD) is designed to project helpful information into your line of sight on the windshield. Feel like surfing the web? Connect up to 7 compatible devices with the available AT&T Wi-fi hotspot²,4 and enjoy up to 4G LTE speeds. In the mood to rock out? Crank the 452-watt AM/FM Premium audio system with 10 speakers including subwoofer.

The Accord Hybrid also boasts a standard 7" colour TFT meter display with Driver Information Interface, showing your audio and phone info, vehicle warning messages, navigation, safety support, trip range and settings. For added confidence, the available HondaLink™1,2,5 Subscription Service helps connect you to a world of features both inside and outside your Accord Hybrid, adding convenience and security to your ownership experience. No matter where you're going, the Accord Hybrid has your tech needs more than covered.



AVAILABLE WIRELESS CHARGING



7" COLOUR TFT METER DISPLAY WITH DRIVER INFORMATION INTERFACE



AVAILABLE BLIND SPOT INFORMATION SYSTEM¹ (BSI) WITH REAR CROSS TRAFFIC MONITOR SYSTEM¹



MULTI-ANGLE REARVIEW CAMERA¹ WITH DYNAMIC GUIDELINES

1. None of the features we describe are intended to replace the driver's responsibility to exercise due care while driving. Drivers should not use handheld devices or operate certain vehicle features unless it is safe and legal to do so. Some features have technological limitations. For additional feature information, limitations and restrictions, please visit www.honda.ca/disclaimers and refer to the vehicle's Owner's Manual.

2. Only compatible with certain devices and operating systems. Operation may be dependent upon: 1. GPS satellite signal reception and available cellular data and/or voice connection; or 2. connection to vehicle's built-in Wi-Fi hotspot, if applicable. Associated charges (incl. data plans, roaming charges or other amounts charged by your wireless carrier) may apply.

3. Map database covers major metropolitan areas in Canada and the 48 contiguous U.S. states.

4. New vehicles are equipped with a complimentary time or data trial period, whichever comes first. After the trial period, contact AT&T to purchase available data plans. 4G LTE connection speeds may vary by region.

5. Subscription to HondaLink™ services is required. HondaLink™-equipped vehicles come with complimentary time-limited trial subscriptions; fees, taxes and other charges will apply in order to continue subscription services upon trial expiry. The availability of certain GPS satellite and/or cellular networks is required for HondaLink™ to operate properly. Service interruptions may occur and/or vehicle system upgrades may be required if cellular network availability is compromised. Some restrictions may apply. For additional HondaLink™ information, please visit www.honda.ca/hondalink and www.honda.ca/privacy.

See more than the road ahead.

BRAKE

FORWARD COLLISION WARNING (FCW) SYSTEM

The FCW system¹ is designed to detect the presence of vehicles in front of you and issue audible, visual and tactile alerts if you're approaching with too much speed. If you fail to respond, CMBS[®] is triggered into operation.



The Honda Sensing™ technologies are designed to help make your drive safer. With intuitive technology and design, we've created a way forward that we can all feel good about. Whether you're driving or sitting in the passenger seat, feel confident in the latest in safety innovation from Honda.



COLLISION MITIGATION BRAKING SYSTEM™ (CMBS[®])

To help reduce the likelihood or severity of a frontal impact, CMBS[®] is engineered to apply light brake pressure if you don't respond to FCW system alerts. If it still senses an imminent collision, CMBS[®] is designed to brake forcefully.



LANE DEPARTURE WARNING (LDW) SYSTEM

The LDW system¹ is designed to monitor vehicle lane position and issue visual and tactile alerts if your vehicle drifts into another detected lane without signalling.



LANE KEEPING ASSIST SYSTEM (LKAS)

The LKAS¹ is engineered to gently correct your steering if you begin to leave a detected lane without signaling, applying torque progressively to the steering to help guide you back to the centre of the lane.



ROAD DEPARTURE MITIGATION (RDM) SYSTEM

The RDM system¹ is designed to help steer and even apply the brakes if it detects your vehicle may leave the road.



ADAPTIVE CRUISE CONTROL (ACC) WITH LOW-SPEED FOLLOW (LSF)

The ACC system¹ with Low-Speed Follow is designed to keep a constant speed and set following interval behind any vehicle detected in front of you, including an ability to slow, stop and start with the flow of traffic.



TRAFFIC SIGN RECOGNITION

TSR uses a monocular camera to monitor speed limit signs, keeping you informed of the detected speed limit with a visual icon on the Driver Information Interface or the available head-up display.

¹ None of the features we describe are intended to replace the driver's responsibility to exercise due care while driving. Drivers should not use handheld devices or operate certain vehicle features unless it is safe and legal to do so. Some features have technological limitations. For additional feature information, limitations and restrictions, please visit www.honda.ca/disclaimers and refer to the vehicle's Owner's Manual.



HondaJet



Motorcycles



Side By Side



ASIMO



Honda Campus



Marine



Power Equipment



ATVs



Blue Skies for Our Children

The Power of Dreams, in all their forms.

At Honda, we're committed to being a leader in innovative thinking. It's part of everything we do, from the design of our vehicles to the way we work. We have a proud tradition of turning ideas into products and initiatives that help move and improve people's lives in every conceivable way. Today, our innovation manifests itself in many forms: our revolutionary Earth Dreams™ technology; the race-inspired performance of our motorcycles and automobiles; the world's most advanced humanoid robot, ASIMO; HondaJet, the fastest, highest flying and most fuel-efficient aircraft in its class; and the first full line of fuel-efficient, low-emission, 4-stroke outboard motors. We continually strive to do things others think can't be done, because true innovation comes from daring to dream.

Beyond dreaming up new products, Honda believes we have a responsibility to help preserve our planet. This belief is why we make significant efforts to help ensure preservation of the environment in virtually all of our company's activities. It's why our head office in Markham, Ontario was designed and built to be LEED® (Leadership in Energy and Environmental Design) Gold Certified. It's why our Alliston, Ontario plant is ISO 14001 certified. And it's why Honda, along with our associates and families, has helped plant more than 140,000 trees in Canada over the last 11 years.

As we move forward, we will continue to honour our responsibility and tradition of turning innovative ideas into products that help make our world a better place. That's what we do. That's The Power of Dreams.

HONDA
The Power of Dreams



BLUE SKIES FOR
OUR CHILDREN



We're Here. At Honda, assistance and support are always available. The team of trained technicians at your Honda dealership will help keep your vehicle in terrific shape. If you need more information or assistance relating to your warranty, call us at 1-888-9-HONDA-9. For all of the latest Honda information, including product specifications, pricing, photos and more, visit honda.ca. It has everything you need to “design” your Honda and personalize it with items from a list of quality accessories.

We're Ready to Help. When you purchase a new Honda, you automatically receive Honda Plus Roadside Assistance. This service is available to you, or any authorized driver, 24 hours a day, 7 days a week, anywhere in Canada or the United States (including the lower 48 states, the District of Columbia, Alaska, Hawaii, and Puerto Rico). Coverage is for 3 years over an unlimited distance and includes a 24-hour toll-free Honda Plus Roadside Assistance number, mechanical breakdown towing, emergency roadside service and many other helpful features. Ask your dealer for more information.

Honda Plus Extended Warranty. Experience added protection with Honda Plus coverage that is behind you for the road ahead. With available coverage options of up to 8 years/200,000 km, you can choose the one that best suits your needs. With a plan this wide-ranging, the only thing that's uncertain is where it will take you.

Honda Financial Services. Whether you buy or lease a Honda, Honda Financial Services can assist you with the process. Ask your dealer which lease or purchase plan best suits your needs.

New Honda Vehicle Warranty. The Honda warranty protection makes Power Train components a minor concern with the Honda 5-year/100,000-km No Nonsense Warranty. In addition to the Honda 5-year/100,000-km No Nonsense Warranty, you and your new Honda are protected by a Honda 3-year/60,000-km Distributor's Warranty as well as an additional series of warranties for such items as emission controls, body corrosion and more.

Genuine Honda Accessories give you the opportunity to fine-tune your new Honda just how you like it. Whether you want to turn up the style, the versatility or the exclusivity, every accessory is designed and built to adhere to the strictest Honda standards. See your dealer for full details.

Genuine Honda Replacement Parts are made to the same exacting standards as original Honda components and are guaranteed by the Genuine Honda Parts Warranty. Using Genuine Honda Parts will help to maintain the quality, reliability and performance of your vehicle.

Always use seat belts and appropriate child seats. Children 12 and under are safest when properly restrained in a rear seat. Properly secure all items stored in cargo areas. Always read the vehicle owner's manual for detailed vehicle operation and feature information.

Honda reserves the right to terminate or change any of the services and/or features listed in this brochure at any time, for any reason. Some features require registration. Certain features may transmit to Honda and/or other service providers a vehicle's location, operating conditions or other information that may be tied to the vehicle identification number (VIN) and can be combined to track a vehicle. For Honda's data use and Privacy Policies, see www.honda.ca/privacy. Specifications, features, illustrations and equipment shown in this brochure are based upon the latest available information at the time of publication. Although descriptions are believed to be correct, accuracy cannot be guaranteed. Honda reserves the right to make changes at any time, without notice or obligation, in colours, specifications, accessories, materials, models and trim availability. Some vehicles may be shown with optional equipment. Some vehicles shown may be U.S. models. Canadian specifications may vary. For Android Auto™ data use and privacy policy, see Terms and Privacy Policy for Android Auto™ app or contact Google Inc. at www.google.com. Android Auto is a trademark of Google Inc. For Apple CarPlay™ data use and privacy policy, see Terms and Privacy Policy for Apple CarPlay™ or contact Apple Inc. at www.apple.com. Apple CarPlay, Siri and iPhone are trademarks of Apple Inc., registered in the U.S. and other countries. Aha, the Aha logo, and the Aha trade dress are trademarks or registered trademarks of HARMAN International Industries, used by permission. Bluetooth is a registered trademark of SIG Inc. Blu-ray is a trademark of Blu-ray Disc Association. HomeLink and HandsFreeLink are registered trademarks or trademarks of Johnson Controls Technology. HD Radio™ is a proprietary trademark of iBiquity Digital Corp. HDMI is a registered trademark of HDMI Licensing LLC. Windows Media is a registered trademark of Microsoft Corporation. LEED® is a registered trademark of the U.S. Green Building Council, licensed to the Canada Green Building Council for use in Canada. © 2018 Sirius XM Canada Inc. "SiriusXM", the SiriusXM logo, channel names and logos are trademarks of SiriusXM Radio Inc. and are used under licence. Honda and all other marks used herein are trademarks or registered trademarks of Honda Motor Co., Ltd. Honda Canada Inc., 180 Honda Boulevard, Markham, ON, Canada L6C 0H9. 1-888-9-HONDA-9. www.honda.ca.



Trims

ACCORD HYBRID

- KEY FEATURES:
- 2.0-litre, 16-valve, Atkinson cycle DOHC, 4-cylinder engine with 181 hp electric motor horsepower¹ and 212 hp combined total horsepower¹
 - 17" aluminum-alloy wheels
 - 4-wheel Anti-lock Braking System² (ABS)
 - 452-watt AM/FM Premium audio system with MP3/Windows Media® Audio playback capability and 10 speakers including subwoofer
 - 60/40 split fold-down rear seatback
 - 7" colour TFT meter display with Driver Information Interface
 - Apple CarPlay™²,³ / Android Auto™²,³
 - Auto high beam
 - Body-coloured heated power door mirrors with integrated LED turn signal indicators
 - Body-coloured side sill garnish with chrome molding
 - Chrome grille
 - Display Audio System² with HondaLink™²,³
 - Driver attention monitor²
 - Driver's seat with 12-way power adjustment including 4-way power lumbar support
 - Dual-zone automatic climate control with air-filtration system
 - ECON mode button
 - Electric-Continuously Variable Transmission (E-CVT)
 - EV and Sport Drive button
 - Front passenger's seat with 4-way manual adjustment
 - Front wiper de-icer
 - HandsFreeLink™-bilingual Bluetooth® wireless mobile phone interface²,³ with steering wheel-mounted controls
 - Heated front seats
 - Honda LaneWatch™ blind spot display²
 - Honda Sensing™ Technologies
 - i-SRS airbag system (front)
 - Leather-wrapped steering wheel
 - LED daytime running lights
 - LED fog lights
 - LED headlights with auto-on/off (low beam)
 - LED taillights
 - MacPherson strut front suspension
 - Multi-angle rearview camera² with dynamic guidelines
 - Multi-link independent rear suspension
 - Near field communication (NFC)
 - Proximity key entry system and pushbutton start
 - Rear console ventilation
 - Rear USB ports³
 - Remote engine starter
 - Security system
 - Shutter grille (Upper)
 - Siri Eyes Free compatibility²,³
 - Steering wheel-mounted deceleration paddle selectors
 - USB device connectors³ (2)
 - Wi-Fi tethering³

ACCORD HYBRID TOURING

- ADDS TO OR REPLACES HYBRID FEATURES:
- Adaptive Damper System
 - AT&T Wi-Fi hotspot³,⁴
 - Auto-dimming rearview mirror
 - Blind Spot Information (BSI) system² with Rear Cross Traffic Monitor² system (replaces Honda LaneWatch™ blind spot display²)
 - Body-coloured front and rear parking sensors
 - Body-coloured heated power door mirrors with integrated LED turn signal indicators with reverse gear tilt-down (passenger side)
 - Chrome door handles
 - Display Audio System² with Honda Satellite-Linked Navigation System™²,⁵ and bilingual Voice Recognition
 - Driver's seat position memory
 - Front passenger's seat with 4-way power adjustment
 - HD Radio™⁶ ready
 - Heated leather-wrapped steering wheel
 - Heated rear seats (outboard positions only)
 - HomeLink® remote system⁷
 - HondaLink™²,³,⁸ Subscription Services
 - LED headlights with auto-on/off (low and high beam)
 - One-touch power moonroof with tilt feature
 - Perforated leather-trimmed seating surfaces
 - Rain-sensing windshield wipers
 - SiriusXM™²,⁹
 - Ventilated front seats
 - Wireless charging

Exterior & Interior Colours

EXTERIOR COLOURS	HYBRID	HYBRID TOURING
		
		
		

1. Horsepower and torque calculations reflect SAE net, Rev. 08/04, SAE J1349 procedures.

2. None of the features we describe are intended to replace the driver's responsibility to exercise due care while driving. Drivers should not use handheld devices or operate certain vehicle features unless it is safe and legal to do so. Some features have technological limitations. For additional feature information, limitations and restrictions, please visit www.honda.ca/disclaimers and refer to the vehicle's Owner's Manual.

3. Only compatible with certain devices and operating systems. Operation may be dependent upon: 1. GPS satellite signal reception and available cellular data and/or voice connection; or 2. connection to vehicle's built-in Wi-Fi hotspot, if applicable. Associated charges (incl. data plans, roaming charges or other amounts charged by your wireless carrier) may apply.

4. New vehicles are equipped with a complimentary time or data trial period, whichever comes first. After the trial period, contact AT&T to purchase available data plans. 4G LTE connection speeds may vary by region.

5. Map database covers major metropolitan areas in Canada and 48 contiguous U.S. states.

6. Coverage varies by market.

7. HomeLink® can be programmed with codes of up to three remote-control devices (e.g., garage-door opener, home security system, etc.)

8. Subscription to HondaLink™ services is required. HondaLink™-equipped vehicles come with complimentary time-limited trial subscriptions; fees, taxes and other charges will apply in order to continue subscription services upon trial expiry. The availability of certain GPS satellite and/or cellular networks is required for HondaLink™ to operate properly. Service interruptions may occur and/or vehicle system upgrades may be required if cellular network availability is compromised. Some restrictions may apply. For additional HondaLink™ information, please visit www.honda.ca/hondalink and www.honda.ca/privacy.

9. Only available in certain areas. Includes a no-charge trial of three months.