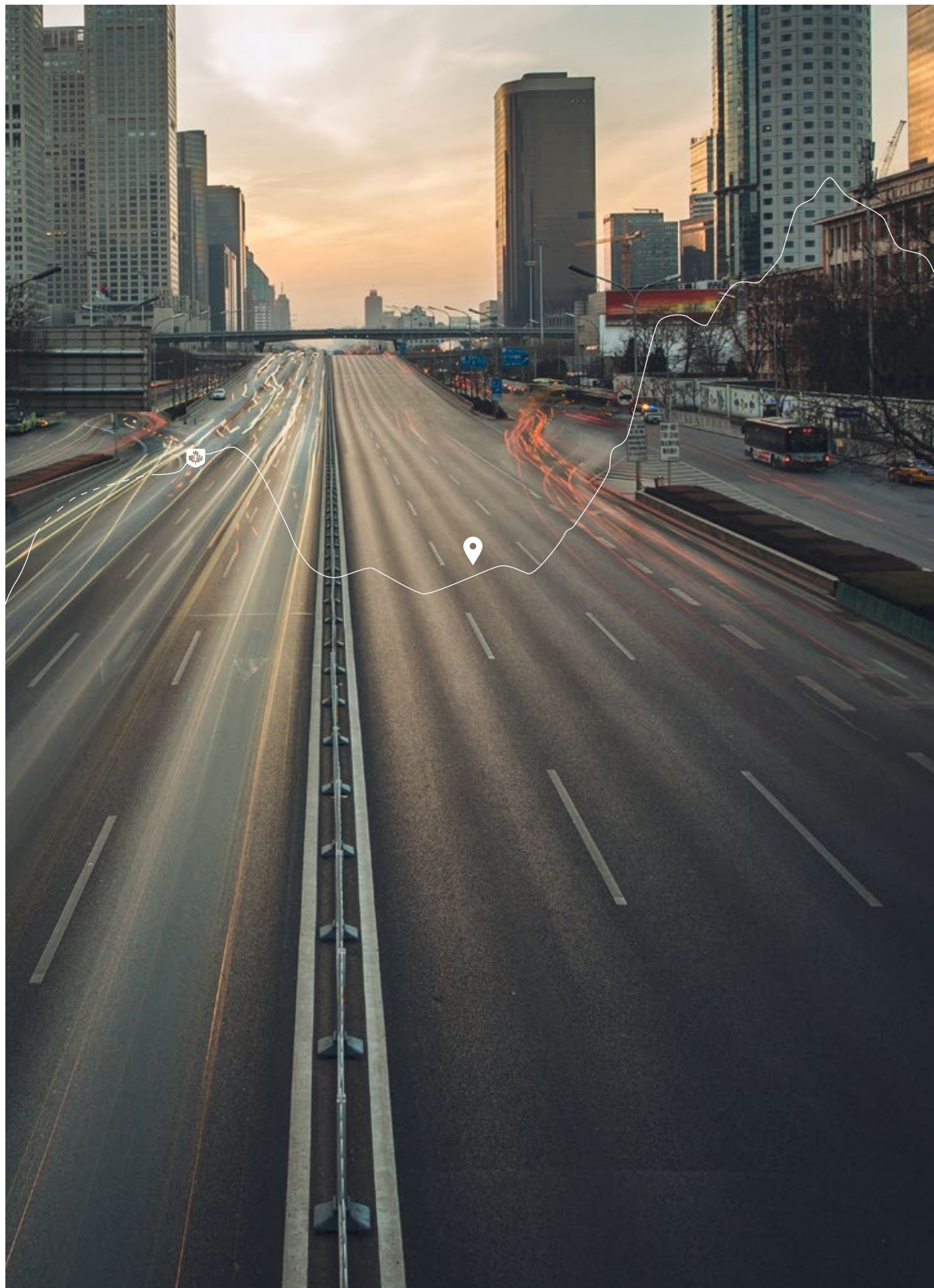


# 2017 Accord







You're in a good place now.  
You've made it. You've found the  
career you love, and have the people  
in your life who hold it all together.  
You find any excuse to explore the  
concrete jungle, and on weekends  
you treat country roads like your  
own backyard. You've travelled  
long and far to end up where you  
are, but your adventures are just  
beginning. Your journey to new  
friends, new memories and new  
experiences starts here.

Overview 01  
Sedan 03  
Coupe 05  
Hybrid 07  
Interior 09  
Technology 11  
Performance & Efficiency 13

Honda Sensing™ Technologies 15  
Safety 17  
Accessories 19  
The Power of Dreams 21  
Warranty 23  
Specs 24-30  
Colours & Trims 31





● FAMILY POLITICS

OFFICE POLITICS ●

148



● ACTUAL POLITICS

## You don't settle. Neither did we.

The Accord, like its drivers, embraces change. We don't just think about putting our drivers behind the wheel. We think about putting them behind dynamic performance with an athletic exterior. Once you're buckled in, you'll be surrounded in comfort, luxury and some of the latest tech features like Apple CarPlay<sup>TM1,2</sup> and Android Auto.<sup>TM1,2</sup> When you're ready for more, the Accord is ready for you.

1. None of the features we describe are intended to replace the driver's responsibility to exercise due care while driving. Drivers should not use handheld devices or operate certain vehicle features unless it is safe and legal to do so. Some features have technological limitations. For additional feature information, limitations and restrictions, please visit [www.honda.ca/disclaimers](http://www.honda.ca/disclaimers) and refer to the vehicle's Owner's Manual.  
2. Only compatible with certain devices and operating systems. Cellular data and/or voice charges may apply, including roaming charges and/or other amounts charged by your wireless carrier.





● 8 AM BAGELS

720

● 12 PM SMOKED MEAT

## All dressed up with everywhere to go.

Whether you're driving or arriving, you'll have to get used to all the stares thanks to the bold styling on the Accord Sedan. The chrome grille and available chrome door handles add yet another touch of luxury to complement the handsome exterior. The LED daytime running headlights and LED taillights complete its look and make you feel the centre of attention on the road. Underneath its body, the available 19" aluminum-alloy wheels add another element of style that'll make everyone's head spin. If you crave more, the Accord Sport trim is nothing short of exhilarating. The aluminum-trimmed sport pedals, body-coloured side sill garnish, leather/fabric combi seating surfaces, interior carbon fibre finish accents and dual exhaust with chrome finishes will make you forget you've got somewhere to be.

**Key Features:** Available one-touch power moonroof | Available LED headlights and LED fog lights | Available mirror-integrated LED turn signal indicators







11

● LOSE YOURSELF HIKING

● ACTUALLY LOSE YOURSELF



11

● FIND YOUR FAVOURITE VIEW

## Two doors. Endless fun.

You'll love looking at the Accord Coupe as much as you love driving it. The dark chrome grille and chrome door handles complement its sleek, sporty design, while its LED daytime running lights give it a gleaming look. Beneath its tough shell sit available 19" aluminum-alloy wheels that will help you sit pretty. Around back, the rear deck lid spoiler elevates its look while you elevate your drive. Once you're buckled in and are ready to make your move, hit a button and open up the one-touch power moonroof with tilt feature to catch some rays. You'll love getting there as much as arriving.

**Key Features:** Standard LED daytime running lights | Standard fog lights and taillights | Standard rear deck lid spoiler | Available LED headlights





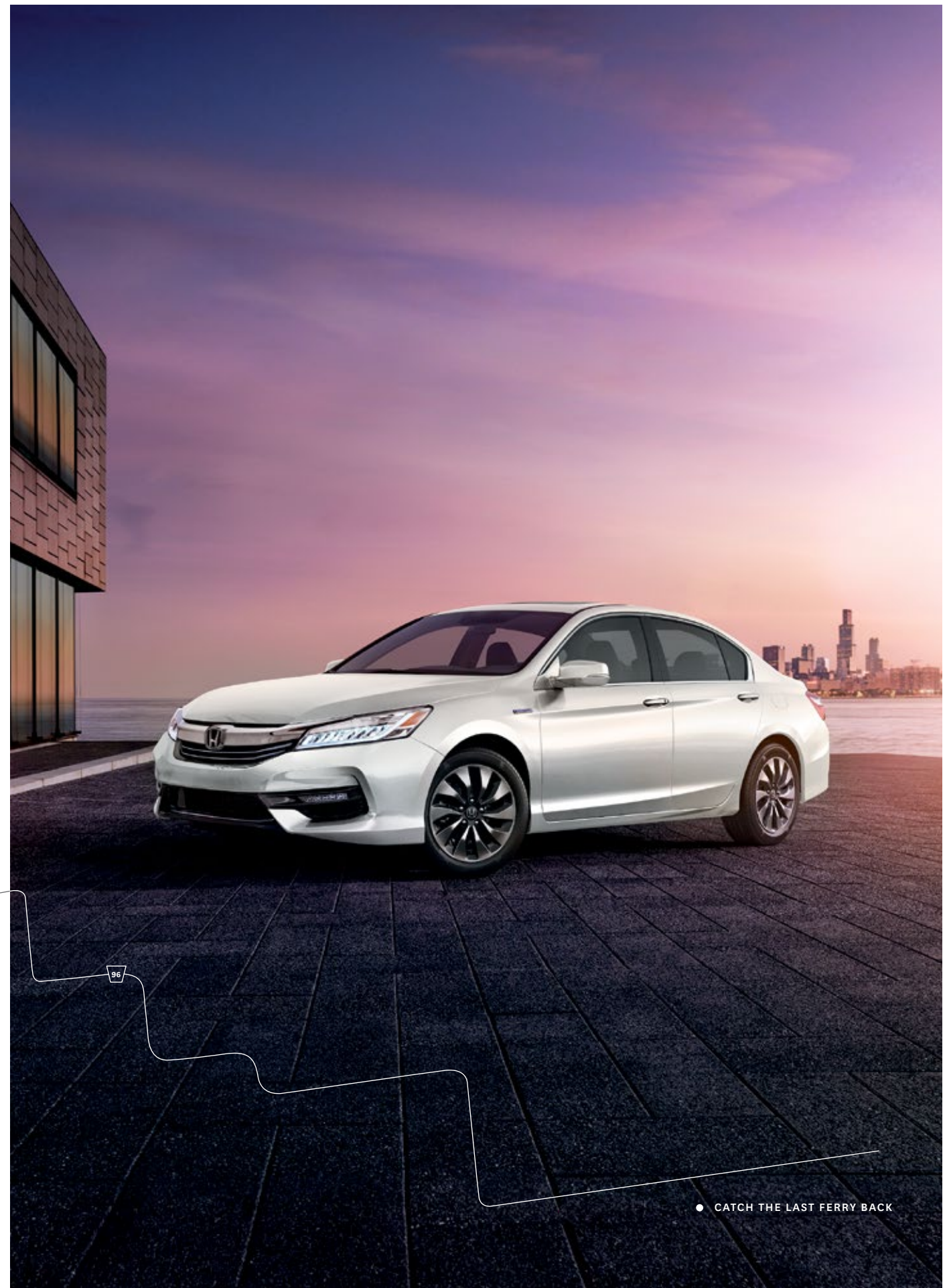
● CATCH THE FERRY



● CATCH SOME RAYS

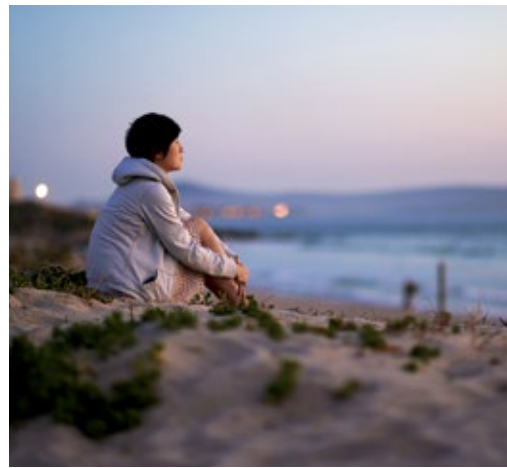
No surprise,  
it loves green lights.

The Accord Hybrid feels nothing like a hybrid. With the blue accent grill, aero-design wheels and its sporty, unique styling, it will help you stand out from the crowd. Don't let the word hybrid fool you, you'll have no trouble powering through your day with the fun-to-drive 2.0-litre, four-cylinder engine with three-mode drive system (EV drive, Hybrid drive and Engine drive). Not only is it designed to be environmentally responsible and fuel-efficient, but Honda Sensing™ Technologies (standard on every hybrid trim) help it pay attention to the world unfolding around it.



● CATCH THE LAST FERRY BACK





● WATCH THE SUNRISE

● STOP FOR LUNCH

● STAY FOR SUNSET

## Step inside your comfort zone.

Inside, the only downside is having to get out. From your lookout, your eyes will take in the view, while your body will enjoy the heated front seats and your passengers won't stop raving about the available heated rear seats. If you enjoy the finer things, you'll love available leather-trimmed seating surfaces. They'll add yet another touch of luxury to your everyday. Just when you thought you couldn't be wowed even more, the driver's seat with 10-way power adjustment including power lumbar support and available driver's seat position memory knows the way you like it, and keeps it that way. Sure, some like it hot, but others like to stay cool. That's why the dual-zone automatic climate control will let you and your co-pilot settle on the perfect temperature. And once you're ready to hit the road, the available 7-speaker Premium audio system will fill your Accord with warm acoustics as the sun warms your skin. When you're ready to get back on your way, the available proximity key entry system with pushbutton start lets you grab a front door handle to unlock, and push the start button to go. Don't be shy, say hello to luxury.





# Compute to work.

1

## Available Honda LaneWatch™ blind spot display.

Keep more of your right side in sight with available Honda LaneWatch™ blind spot display<sup>1</sup>. It's engineered to send a live video feed from a camera mounted under your passenger-side mirror to your Display Audio System<sup>1</sup>, providing close to four times more visibility than a side view mirror alone.

3

## 8" i-MID.

The 8" i-MID (intelligent Multi-Information Display) helps you get to know your Accord better. It'll show you your audio and phone information, as well as any text and email information. Plus, it also displays important vehicle information like trip range and fuel efficiency.

5

## Available Honda Satellite-Linked Navigation System™ with bilingual Voice Recognition.

The available Honda Satellite-Linked Navigation System™<sup>3</sup> comes with bilingual Voice Recognition<sup>1</sup> and uses the Display Audio System<sup>1</sup> to plan your route. It's like asking someone for directions who actually knows where they're going.

2

## Apple CarPlay™/Android Auto.™

Your Accord now has the soul of a smartphone. Teamed up with the Display Audio System<sup>1</sup>, Apple CarPlay™<sup>1,2</sup> and Android Auto™<sup>1,2</sup> seamlessly connect your compatible smartphone to let you use some of your apps. It'll make staying in touch with family and friends more convenient and your drive more entertaining.

4

## Available wireless charging.

Just drop any Qi wireless charging compatible smartphone or accessory case into the available wireless charging pad and the Accord will keep your phone juiced.

6

## Multi-angle rearview camera.

You now come with eyes on the back of your head, or at least your Accord does. Once you swing it into reverse, a live feed from a rear camera<sup>1</sup> is shown right on the Display Audio System<sup>1</sup>. What's behind you is no longer a mystery.



1. None of the features we describe are intended to replace the driver's responsibility to exercise due care while driving. Drivers should not use handheld devices or operate certain vehicle features unless it is safe and legal to do so. Some features have technological limitations. For additional feature information, limitations and restrictions, please visit [www.honda.ca/disclaimers](http://www.honda.ca/disclaimers) and refer to the vehicle's Owner's Manual.  
2. Only compatible with certain devices and operating systems. Cellular data and/or voice charges may apply, including roaming charges and/or other amounts charged by your wireless carrier.  
3. Map database covers major metropolitan areas in Canada and the 48 contiguous U.S. states.





● SEE A SHOW

## Gobbles up the roadway while sipping on fuel.

Think of the Accord as a well-tuned performance piece that really moves you. The available 3.5-litre, 278-hp<sup>1</sup> V6 engine and the 2.4-litre 185-hp<sup>1</sup>, 4-cylinder engine (189-hp<sup>1</sup> on Sport trim) comfortably house the horses that are always at your beck and call. Add in the available continuously variable transmission (CVT) on the 2.4-litre, 4-cylinder engine and you've got a smooth, yet fun-to-drive ride. Not only is it tough-looking and powerful, it still has a soft side for the world around it thanks to the Eco Assist™ system with ECON mode button, which is designed to help improve fuel efficiency. The road is long, and that's just the way the Accord likes it.

**Key Features:** Available 6-speed manual transmissions | Available 6-speed automatic transmission (V6 engines) | Variable Cylinder Management\* (VCM\*) technology on V6 engine (AT only) | Available steering wheel-mounted paddle shifters

1. Horsepower and torque calculations reflect SAE net, Rev. 08/04, SAE J1349 procedures.

● CRITIQUE IT OVER DINNER



● FINALLY RELIEVE THE BABYSITTER





# Like having eyes in the front, back and side.

The Honda Sensing™ technologies are designed to help make your drive safer. With intuitive technology and design, we've created a way forward that we can all feel good about. Whether you're driving or sitting in the passenger seat, feel confident in the latest in safety innovation from Honda.



## Forward Collision Warning (FCW) system.

The available FCW system<sup>1</sup> that is integrated with CMBS® is designed to detect the presence of vehicles in front of you and issue alerts if you're approaching with too much speed. If you fail to respond to the alerts, the CMBS® is triggered into operation.



## Collision Mitigation Braking System™ (CMBS®).

To help reduce the likelihood or severity of a frontal impact, the available CMBS® is engineered to apply brake pressure if you don't slow down when it senses you're at risk of a collision. If it still senses an imminent collision, CMBS® is designed to brake firmly.



## Lane Departure Warning (LDW) system.

The available LDW system<sup>1</sup> is designed to monitor vehicle lane position and alert you if your vehicle drifts into a new lane when you haven't signaled.



## Lane Keeping Assist System (LKAS).

The available LKAS<sup>1</sup> is engineered to gently correct your steering if you begin to leave a detected lane without signaling, applying torque progressively to the steering to help guide you back to the centre of the lane.



## Road Departure Mitigation (RDM) system.

The available Road Departure Mitigation system<sup>1</sup> is designed to help steer and even apply the brakes to help keep the vehicle from leaving the road.



## Adaptive Cruise Control (ACC).

The available ACC system<sup>1</sup> is designed to keep a set speed and set following interval behind the vehicle detected ahead of yours.



Honda Sensing™ suite of safety and driver assist features are only available on automatic transmission vehicles.

<sup>1</sup> None of the features we describe are intended to replace the driver's responsibility to exercise due care while driving. Drivers should not use handheld devices or operate certain vehicle features unless it is safe and legal to do so. Some features have technological limitations. For additional feature information, limitations and restrictions, please visit [www.honda.ca/disclaimers](http://www.honda.ca/disclaimers) and refer to the vehicle's Owner's Manual.





## Solid on safety.

At Honda, we strive to provide a high level of standard safety features to help ensure the safety of occupants, other drivers and even pedestrians. This added peace of mind helps our drivers maintain the confidence to enjoy every road to the fullest.

### PASSIVE SAFETY



#### Advanced Compatibility Engineering™ (ACE™) body structure

The highly innovative, next generation Advanced Compatibility Engineering™ (ACE™) body structure is engineered to help disperse frontal impact energy to enhance occupant protection, while more effectively controlling it in severe collisions to help prevent intrusion into the passenger cabin.



#### Child safety

The Accord features childproof rear door locks (Sedan only), as well as rear seat Lower Anchors and Tethers for Children (LATCH), which give you a simple and convenient method to install compatible child safety seats without using the vehicle's seat belt system.



#### Pedestrian safety

Innovative pedestrian safety features include an energy-absorbing hood and front fenders and deformable wiper pivots.



#### Seat belt safety

The Accord helps prepare you for the unexpected with 3-point height-adjustable (Sedan only) front seat belts with automatic tensioning system and 3-point rear seat belts.



#### Six standard airbags

The cabin of the Accord contains six standard airbags. It features dual-stage, multiple-threshold front airbags as well as side curtain airbags with rollover sensors, which are designed to deploy the side curtain airbags in the event of a rollover. Plus, it has Smartvent™ side airbags, which are designed to deploy in a manner that mitigates the risk of injury to out-of-position or smaller occupants.



#### HondaLink™ Assist Automatic Emergency Response System

The HondaLink Assist Automatic Emergency Response System<sup>1,3,4</sup> helps you get the help you need when you need it most. If the airbags deploy, your Display Audio System<sup>1</sup> is designed to automatically attempt to put you on a call with an operator who will forward your location to first responders if needed. It works with any compatible Bluetooth®-paired phone as long as it has reception, does not require a subscription and gives you added peace of mind while you're on the road.

### ACTIVE SAFETY



#### Controlled Braking

To assist with safe stopping, the 4-wheel Anti-lock Braking System<sup>1</sup> (ABS) is designed to help you maintain control under hard braking conditions, while Electronic Brake-force Distribution (EBD) helps to optimize braking power based on weight distribution inside the vehicle. In addition, Brake Assist is engineered to help improve braking performance by applying brake pressure when a panic stop is detected.



#### Vehicle Stability Assist (VSA®) with Traction Control

Vehicle Stability Assist<sup>1</sup> with Traction Control is designed to sense and help correct oversteer and understeer scenarios to enhance handling and cornering stability, while Traction Control is designed to minimize wheel spin when accelerating on loose or slippery surfaces, helping to inspire greater driver confidence.



#### Tire Pressure Monitor System (TPMS)

To promote enhanced safety and fuel efficiency, the Tire Pressure Monitoring System<sup>2</sup> continually checks the air pressure in each tire. If pressure drops in any tire, the driver receives a dashboard alert.



#### Hill Start Assist<sup>1</sup>

When you take your foot off the brake, this feature is engineered to temporarily maintain brake pressure to help prevent your Accord from starting to roll backwards when stopped on an incline.

1. None of the features we describe are intended to replace the driver's responsibility to exercise due care while driving. Drivers should not use handheld devices or operate certain vehicle features unless it is safe and legal to do so. Some features have technological limitations. For additional feature information, limitations and restrictions, please visit [www.honda.ca/disclaimers](http://www.honda.ca/disclaimers) and refer to the vehicle's Owner's Manual.  
 2. For optimal tire wear and performance, the pressure should be checked regularly with a tire gauge. Do not rely solely on the monitor system.  
 3. Only compatible with certain devices and operating systems. Cellular data and/or voice charges may apply, including roaming charges and/or other amounts charged by your wireless carrier.  
 4. Operation requires wireless mobile phone to be paired with the vehicle. Operation is dependent upon cellular data and/or voice connection availability and GPS satellite signal reception.





Trunk tray



Rear splash guards



All-season floor mats



Aero kit



Door sill trim, illuminated



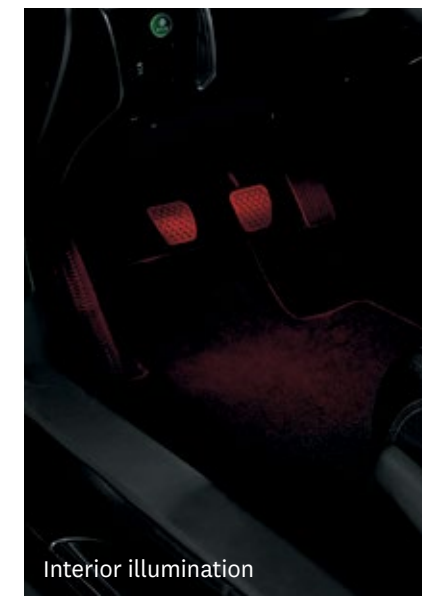
Rear back-up sensors



Cargo net



19" alloy wheel - super-bright chrome



Interior illumination



Moonroof visor

## Sedan Accessories.

18" alloy wheel - super-bright chrome  
 19" alloy wheel - super-bright chrome  
 All-season floor mats  
 Ashtray, cup-holder style  
 Auto day/night mirror  
 Auto day/night mirror attachment  
 Body side molding  
 Car cover  
 Cargo hook  
 Cargo net  
 Door edge film  
 Door edge guards  
 Door lower garnish, chrome

Door sill trim  
 Door sill trim, illuminated  
 Door visors  
 Engine block heater  
 Fog lights  
 Front underbody spoiler  
 Full nose mask  
 Grille trim  
 Hood edge deflector  
 Interior illumination  
 Interior illumination, sport  
 Locking wheel nuts - exposed  
 Locking wheel nuts - unexposed

Moonroof visor  
 Paint pen  
 Rear back-up sensors  
 Rear bumper appliqué  
 Rear deck lid spoiler  
 Rear seat cover  
 Rear splash guards  
 Rear underbody spoiler  
 Rear wing spoiler  
 Side underbody spoiler  
 Trunk edge and bumper protector  
 Trunk tray  
 Wireless charger  
 Wireless charger attachment

### Protection package

All-season floor mats  
 Rear splash guards  
 Trunk tray

### Aero kit

Front underbody spoiler  
 Rear underbody spoiler  
 Side underbody spoiler

### Fundamental package

Cargo hooks  
 Cargo net

### ProStyle package

All-season floor mats  
 Door sill trim, illuminated  
 Grille trim  
 Trunk tray

### Remote engine starter package

Base unit  
 Attachment without pushbutton start  
 Key fob

## Coupe Accessories.

18" alloy wheel - super-bright chrome  
 19" alloy wheel - super-bright chrome  
 All-season floor mats  
 Ashtray, cup-holder style  
 Auto day/night mirror  
 Auto day/night mirror attachment  
 Body side molding  
 Car cover  
 Cargo hook  
 Cargo net  
 Door edge film  
 Door edge guards  
 Door sill trim, illuminated

Engine block heater  
 Fog lights, LED  
 Front underbody spoiler  
 Full nose mask  
 Hood edge deflector  
 Interior illumination  
 Locking wheel nuts - exposed  
 Locking wheel nuts - unexposed  
 Moonroof visor  
 Paint pen  
 Rear back-up sensors  
 Rear bumper appliqué  
 Rear deck lid spoiler

Rear splash guards  
 Rear underbody spoiler  
 Side underbody spoiler  
 Trunk edge and bumper protector  
 Trunk tray  
 Wireless charger  
 Wireless charger attachment

### Protection package

All-season floor mats  
 Rear splash guards  
 Trunk tray

### Aero kit

Front underbody spoiler  
 Rear underbody spoiler  
 Side underbody spoiler

### Fundamental package

Cargo hooks  
 Cargo net

### Remote engine starter package

Base unit  
 Attachment  
 Key FOB

Accessories and packages are subject to inventory availability.





HondaJet



Motorcycles



Side By Side



ASIMO



Honda Campus



Marine



Power Equipment



ATVs



Blue Skies for Our Children

## The Power of Dreams, in all their forms.

At Honda, we're committed to being a leader in innovative thinking. It's part of everything we do, from the design of our vehicles to the way we work. We have a proud tradition of turning ideas into products and initiatives that help move and improve people's lives in every conceivable way. Today, our innovation manifests itself in many forms: our revolutionary Earth Dreams™ technology; the race-inspired performance of our motorcycles and automobiles; the world's most advanced humanoid robot, ASIMO; HondaJet, the fastest, highest flying and most fuel-efficient aircraft in its class; and the first full line of fuel-efficient, low-emission, 4-stroke outboard motors. We continually strive to do things others think can't be done, because true innovation comes from daring to dream.

Beyond dreaming up new products, Honda believes we have a responsibility to help preserve our planet. This belief is why we make significant efforts to help ensure preservation of the environment in virtually all of our company's activities. It's why our head office in Markham, Ontario was designed and built to be LEED® (Leadership in Energy and Environmental Design) Gold Certified. It's why our Alliston, Ontario plant is ISO 14001 certified. And it's why Honda, along with our associates and families, has helped plant more than 100,000 trees in Canada over the last 9 years.

As we move forward, we will continue to honour our responsibility and tradition of turning innovative ideas into products that help make our world a better place. That's what we do. That's The Power of Dreams.







**We're Here.** At Honda, assistance and support are always available. The team of trained technicians at your Honda dealership will help keep your vehicle in terrific shape. If you need more information or assistance relating to your warranty, call us at 1-888-9-HONDA-9. For all of the latest Honda information, including product specifications, pricing, photos and more, visit [honda.ca](http://honda.ca). It has everything you need to "design" your Honda and personalize it with items from a list of quality accessories.

**We're Ready to Help.** When you purchase a new Honda, you automatically receive Honda Plus Roadside Assistance. This service is available to you, or any authorized driver, 24 hours a day, 7 days a week, anywhere in Canada or the continental United States. Coverage is for 3 years over an unlimited distance and includes a 24-hour toll-free Honda Plus Roadside Assistance number, mechanical breakdown towing, emergency roadside service and many other helpful features. Ask your dealer for more information.

**Honda Plus Extended Warranty.** Experience added protection with Honda Plus coverage that is behind you for the road ahead. With available coverage options of up to 8 years/200,000 km, you can choose the one that best suits your needs. With a plan this wide-ranging, the only thing that's uncertain is where it will take you.

**Honda Financial Services.** Whether you buy or lease a Honda, Honda Financial Services can assist you with the process. Ask your dealer which lease or purchase plan best suits your needs.

**New Honda Vehicle Warranty.** The Honda warranty protection makes Power Train components a minor concern with the Honda 5-year/100,000-km No Nonsense Warranty. In addition to the Honda 5-year/100,000-km No Nonsense Warranty, you and your new Honda are protected by a Honda 3-year/60,000-km Distributor's Warranty as well as an additional series of warranties for such items as emission controls, body corrosion and more.

**Genuine Honda Accessories** give you the opportunity to fine-tune your new Honda just how you like it. Whether you want to turn up the style, the versatility or the exclusivity, every accessory is designed and built to adhere to the strictest Honda standards. See your dealer for full details.

**Genuine Honda Replacement Parts** are made to the same exacting standards as original Honda components and are guaranteed by the Genuine Honda Parts Warranty. Using Genuine Honda Parts will help to maintain the quality, reliability and performance of your vehicle.

**Always use seat belts and appropriate child seats. Children 12 and under are safest when properly restrained in a rear seat. Properly secure all items stored in the cargo area. Always read the vehicle owner's manual for detailed vehicle operation and feature information.**

Honda reserves the right to terminate or change any of the services and/or features listed in this brochure at any time, for any reason. Some features require registration. Certain features may transmit to Honda and/or other service providers a vehicle's location, operating conditions or other information that may be tied to the vehicle identification number (VIN) and can be combined to track a vehicle. For Honda's data use and privacy policy, see [www.honda.ca/privacy](http://www.honda.ca/privacy). Specifications, features, illustrations and equipment shown in this brochure are based upon the latest available information at the time of publication. Although descriptions are believed to be correct, accuracy cannot be guaranteed. Honda reserves the right to make changes at any time, without notice or obligation, in colours, specifications, accessories, materials and models. Some vehicles may be shown with optional equipment. Some vehicles shown may be U.S. models. Canadian specifications may vary. For Android Auto™ data use and privacy policy, see Terms and Privacy Policy for Android Auto™ app or contact Google Inc. at [www.google.com](http://www.google.com). For Apple CarPlay™ data use and privacy policy, see Terms and Privacy policy for Apple CarPlay™ or contact Apple Inc. at [www.apple.com](http://www.apple.com). Aha, the Aha logo, and the Aha trade dress are trademarks or registered trademarks of HARMAN International Industries, used by permission. Android Auto is a trademark of Google Inc. Apple CarPlay, Siri and iPhone are trademarks of Apple Inc., registered in the U.S. and other countries. Bluetooth is a registered trademark of SIG Inc. Blu-ray is a trademark of Blu-ray Disc Association. HomeLink and HandsFreeLink are registered trademarks or trademarks of Johnson Controls Technology. HD Radio™ is a proprietary trademark of iBiquity Digital Corp. HDMI is a registered trademark of HDMI Licensing LLC. Windows Media is a registered trademark of Microsoft Corporation. LEED® is a registered trademark of the U.S. Green Building Council, licensed to the Canada Green Building Council for use in Canada. © 2016 Sirius XM Canada Inc. "SiriusXM", the SiriusXM logo, channel names and logos are trademarks of SiriusXM Radio Inc. and are used under licence. Honda, Accord, Civic, CR-V, Fit, HR-V, Odyssey, Pilot, Ridgeline, i-VTEC, Advanced Compatibility Engineering, ACE, Collision Mitigation Braking System, CMBS, Drive-by-Wire Throttle System, Earth Dreams, Eco Assist, HondaLink, Honda Satellite-Linked Navigation System, Honda Sensing, Honda LaneWatch, HondaVAC, i-VTM4, Intelligent Control System, Magic Seat, Maintenance Minder, PGM-FI, Real Time AWD, Smartvent, Variable Cylinder Management, VCM, VSA, The Power of Dreams, HondaJet and ASIMO are trademarks of Honda Motor Co., Ltd. Honda Canada Inc., 180 Honda Boulevard, Markham, ON, Canada L6C 0H9. 1-888-9-HONDA-9. [www.honda.ca](http://www.honda.ca).







## Sedan

COMFORT & CONVENIENCE (CONTINUED)	LX	SE	SPORT	EX-L	TOURING	EX-L V6	TOURING V6	HYBRID	HYBRID TOURING
Rear-seat heater ducts	•	•	•	•	•	•	•	•	•
Remote engine starter		•	CVT model	•	•	•	•	•	•
Maintenance Minder™ system	•	•	•	•	•	•	•	•	•
Steering wheel-mounted controls (cruise control, audio, telephone, multi-information display)	•	•	•	•	•	•	•	•	•
Sunglasses holder	•	•	•	•	•	•	•	•	•
Security system	•	•	•	•	•	•	•	•	•
Immobilizer theft-deterrent system	•	•	•	•	•	•	•	•	•
Wireless charging					•		•		•
Tilt and telescopic steering column	•	•	•	•	•	•	•	•	•

SEATING & TRIM	LX	SE	SPORT	EX-L	TOURING	EX-L V6	TOURING V6	HYBRID	HYBRID TOURING
Driver's seat position memory				•	•	•	•		•
Driver's seat with 10-way power adjustment including power lumbar support	•	•	•	•	•	•	•	•	•
Floor mats	•	•	•	•	•	•	•	•	•
60/40 split fold-down rear seatback	•	•	•	•	•	•	•		•
Front passenger's seat with 4-way manual adjustment	•	•	•					•	
Front passenger's seat with 4-way power adjustment				•	•	•	•		•
Heated front seats	•	•	•	•	•	•	•	•	•
Heated rear seats				•	•	•	•		•
Perforated leather-trimmed seating surfaces				•	•	•	•		•
Leather/fabric combi seating surfaces			•						
Leather shift knob		•	CVT model	•	•	•	•		
Aluminum-trimmed shift knob			MT model						
Leather-wrapped steering wheel	•	•	•	•	•	•	•	•	•

ENTERTAINMENT	LX	SE	SPORT	EX-L	TOURING	EX-L V6	TOURING V6	HYBRID	HYBRID TOURING
i-MID (intelligent Multi-Information Display)	•	•	•	•	•	•	•	•	•
160-watt AM/FM/CD audio system with MP3/Windows Media® Audio playback capability and 6 speakers	•	•							
360-watt AM/FM/CD Premium audio system with MP3/Windows Media® Audio playback capability and 7 speakers including subwoofer			•	•	•	•	•	•	•
Apple CarPlay™ <sup>2,4</sup> / Android Auto™ <sup>2,4</sup>	•	•	•	•	•	•	•	•	•
Bluetooth® Streaming Audio <sup>2,4</sup>	•	•	•	•	•	•	•	•	•
Display Audio System <sup>2</sup> with HondaLink™ <sup>2,4</sup>	•	•	•	•	Including Navigation <sup>2,7</sup>	•	Including Navigation <sup>2,7</sup>	•	Including Navigation <sup>2,7</sup>
HD Radio™ <sup>8</sup> ready					•		•		•
Siri Eyes Free compatibility <sup>2,4</sup>	•	•	•	•	•	•	•	•	•
Illuminated steering wheel-mounted audio controls	•	•	•	•	•	•	•	•	•
USB device connectors <sup>4</sup>	2	2	2	2	2	2	2	2	2
SMS text message <sup>2,4</sup> / E-mail function <sup>2,4</sup>	•	•	•	•	•	•	•	•	•
SiriusXM™ <sup>9</sup>				•	•	•	•	•	•
Wi-Fi tethering <sup>4</sup>	•	•	•	•	•	•	•	•	•

FUEL ECONOMY <sup>10</sup> (L/100 KM)	LX	SE	SPORT	EX-L	TOURING	EX-L V6	TOURING V6	HYBRID	HYBRID TOURING
Automatic transmission (City/Hwy/Combined)						11.4/7.2/9.5	11.4/7.2/9.5		
Manual transmission (City/Hwy/Combined)	10.4/7.4/9.0		10.4/7.4/9.0						
Continuously variable transmission (City/Hwy/Combined)	8.7/6.6/7.8	8.7/6.6/7.8	9.2/6.9/8.2	8.7/6.6/7.8	8.7/6.6/7.8				
E-Continuously Variable Transmission (City/Hwy/Combined)								4.9/5.1/5.0	4.9/5.1/5.0

DIMENSIONS	LX	SE	SPORT	EX-L	TOURING	EX-L V6	TOURING V6	HYBRID	HYBRID TOURING
Cargo volume (L)	447	447	439	439	439	439	439	382	382
Curb weight – MT/CVT (L4) AT(V6)/E-CVT (kg)	1466/1497/NA	NA/1500/NA	1507/1538/1541 (Honda Sensing™ model )/NA	NA/1530/NA	NA/1558/NA	NA/1609/NA	NA/1643/NA	NA/NA/1594	NA/NA/1613
Fuel tank capacity (L)	65	65	65	65	65	65	65	56	56
Ground clearance – no-load/full-load (mm)	146/110	146/110	146/110	141/110	141/110	141/110	141/110	136/110	136/110
Headroom – front/rear (mm)	994/952	994/952	955/940	955/940	955/940	955/940	955/940	994/952	955/940
Height (mm)	1465	1465	1465	1465	1465	1465	1465	1460	1460
Hip room – front/rear (mm)	1412/1389	1412/1389	1412/1389	1412/1389	1412/1389	1412/1389	1412/1389	1412/1389	1412/1389
Legroom – front/rear (mm)	1079/977	1079/977	1079/977	1079/977	1079/977	1079/977	1079/977	1079/977	1079/977
Length (mm)	4907	4907	4907	4907	4907	4907	4907	4948	4948
Passenger volume (L)	2922	2922	2854	2854	2854	2854	2854	2922	2854
Shoulder room – front/rear (mm)	1489/1435	1489/1435	1489/1435	1489/1435	1489/1435	1489/1435	1489/1435	1489/1435	1489/1435
Track – front/rear (mm)	1594/1601	1594/1601	1584/1593	1584/1591	1584/1593	1584/1591	1584/1593	1584/1592	1584/1592
Turning radius (m) (Curb-to-Curb)	5.81	5.81	6.03	5.81	6.03	5.81	6.03	5.81	5.81
Wheelbase (mm)	2775	2775	2775	2775	2775	2775	2775	2775	2775
Width – (mm)	1849	1849	1849	1849	1849	1849	1849	1849	1849
Width – including mirrors/mirrors folded (mm)	2051/1856	2051/1856	2084/1858	2084/1858	2084/1858	2084/1858	2084/1858	2084/1858	2084/1858

- Horsepower and torque calculations reflect SAE net, Rev. 08/04, SAE J1349 procedures.
- None of the features we describe are intended to replace the driver's responsibility to exercise due care while driving. Drivers should not use handheld devices or operate certain vehicle features unless it is safe and legal to do so. Some features have technological limitations. For additional feature information, limitations and restrictions, please visit [www.honda.ca/disclaimers](http://www.honda.ca/disclaimers) and refer to the vehicle's Owner's Manual.
- For optimal tire wear and performance, the pressure should be checked regularly with a tire gauge. Do not rely solely on the monitor system.
- Only compatible with certain devices and operating systems. Cellular data and/or voice charges may apply, including roaming charges and/or other amounts charged by your wireless carrier.
- Operation requires wireless mobile phone to be paired with the vehicle. Operation is dependent upon cellular data and/or voice connection availability and GPS satellite signal reception.
- HomeLink® can be programmed with codes of up to three remote-control devices (e.g., garage-door opener, home security system, etc.).
- Map database covers major metropolitan areas in Canada and the 48 contiguous U.S. states.
- Coverage varies by market.
- Only available in certain areas. Includes a no-charge trial of three months.
- Estimated fuel consumption based on Government of Canada's 5-cycle testing method. Your actual fuel consumption will vary based on driving habits and other factors – use for comparison only. For more information on 5-cycle testing, visit <http://vehicles.nrcan.gc.ca>.

## Coupe

ENGINE	EX	TOURING	TOURING V6
2.4-litre, 16-valve, Direct Injection DOHC, i-VTEC® 4-cylinder	•	•	
3.5-litre, 24-valve, SOHC, i-VTEC® V6			•
Horsepower @ rpm <sup>1</sup>	185 @ 6400	185 @ 6400	278 @ 6200
Torque (lb.-ft. @ rpm) <sup>1</sup>	181 @ 3900	181 @ 3900	252 @ 4900 (AT) 251 @ 5300 (MT)
Displacement (cc)	2356	2356	3471
Emissions rating MT/CVT (L4) or AT (V6)	Tier 3 Bin 125/Tier 3 Bin 30	Tier 3 Bin 125/Tier 3 Bin 30	Tier 3 Bin 125/Tier 3 Bin 125
Bore and stroke (mm)	87 x 99	87 x 99	89 x 93
Compression ratio	11.1:1	11.1:1	10.5:1 (AT)/10:1 (MT)
Active Control Engine Mount (ACM) system			•
Eco Assist™ system	•	•	•
Drive-by-Wire Throttle System™	•	•	•
Multi-Point Programmed Fuel Injection system (PGM-FI®)			•
Direct injection	•	•	
Variable Cylinder Management® (VCM®)			AT only
Recommended fuel	Regular	Regular	Regular

DRIVETRAIN	EX	TOURING	TOURING V6
6-speed automatic transmission (AT) with Grade Logic Control			•
6-speed manual transmission (MT)			•
Continuously variable transmission (CVT)	Available	Available	
ECON mode button	•	•	•
Front-wheel drive	•	•	•
Steering wheel-mounted paddle shifters (CVT)	Available	Available	Available

BODY/SUSPENSION/CHASSIS	EX	TOURING	TOURING V6
18" aluminum-alloy wheels	•		
19" aluminum-alloy wheels		•	•
All-season tires	P235/45 R18 94V	P235/40 R19 96V	P235/40 R19 96V
Electric power-assisted rack-and-pinion steering (EPS)	•	•	•
Front strut tower brace	•	•	•
MacPherson strut front suspension	•	•	•
Multi-link independent rear suspension	•	•	•
Power-assisted, ventilated front/solid rear disc brakes	•	•	•
Steering wheel turns, lock-to-lock	2.46	2.46	2.47
Stabilizer bars – front and rear (mm)	18/16	18/16	19/16
Temporary spare tire	T135/90D16 102M	T135/80D17 103M	T135/80D17 103M

ACTIVE SAFETY	EX	TOURING	TOURING V6
4-wheel Anti-lock Braking System (ABS) <sup>2</sup>	•	•	•
Brake Assist	•	•	•
Collision Mitigation Braking System™ (CMBS®) <sup>3</sup> (HS*)	Available	Available	Available
Electronic Brake-force Distribution (EBD)	•	•	•
Forward Collision Warning (FCW) system <sup>2</sup> (HS*)	Available	Available	Available
Hill Start Assist <sup>2</sup>	•	•	•
LED daytime running lights	•	•	•
Tire Pressure Monitoring System (TPMS) <sup>3</sup> – indirect	•	•	•
Lane Departure Warning (LDW) system <sup>2</sup> (HS*)	Available	Available	Available
Road Departure Mitigation (RDM) system <sup>2</sup> (HS*)	Available	Available	Available
Vehicle Stability Assist <sup>2</sup> (VSA®) with Traction Control	•	•	•

HS\* = Feature is a component of the Honda Sensing™ suite of safety and driver assist features. These features are only available on automatic transmission vehicles.

PASSIVE SAFETY	EX	TOURING	TOURING V6
3-point seat belts with automatic tensioning system	•	•	•
Next-generation Advanced Compatibility Engineering™ (ACE™) body structure	•	•	•
Dual-stage, multiple-threshold front airbags (SRS)	•	•	•
HondaLink™ Assist Automatic Emergency Response System <sup>2,4,5</sup>	•	•	•
Side curtain airbags with rollover sensor system	•	•	•
Smartvent™ side airbags	•	•	•
Lower Anchors and Tethers for Children (LATCH)	•	•	•

DRIVER ASSIST TECHNOLOGY	EX	TOURING	TOURING V6
Adaptive Cruise Control (ACC) <sup>2</sup> (HS*)	Available	Available	Available
Lane Keeping Assist System (LKAS) <sup>2</sup> (HS*)	Available	Available	Available
Auto high beam		•	•
Honda LaneWatch™ blind spot display <sup>2</sup>	•	•	•

HS\* = Feature is a component of the Honda Sensing™ suite of safety and driver assist features. These features are only available on automatic transmission vehicles.



## Coupe

EXTERIOR	EX	TOURING	TOURING V6
Body-coloured heated power door mirrors	•	•	•
Folding door mirrors	•	•	•
Mirror-integrated LED turn signal indicators	•	•	•
Chrome door handles	•	•	•
Dual exhaust with chrome finishers			•
LED fog lights	•	•	•
Front splash guards	•	•	•
LED taillights	•	•	•
One-touch power moonroof with tilt feature	•	•	•
Projector-beam halogen headlights	With auto-on/off		
LED headlights		With auto-on/off	With auto-on/off
LED front turn indicators		•	•
Rain-sensing windshield wipers		•	•
Rear deck lid spoiler	•	•	•
Rear window defroster	•	•	•
Speed-sensing, variable intermittent windshield wipers	•	•	•

COMFORT & CONVENIENCE	EX	TOURING	TOURING V6
12-volt power outlet	2	2	2
Active Noise Cancellation (ANC)	•	•	•
Auto-dimming rearview mirror		•	•
Body-coloured front and rear parking sensors		•	•
Cargo area light	•	•	•
Centre console and storage compartment	•	•	•
Driver's and front passenger's illuminated vanity mirrors	•	•	•
Driver's and front passenger's seatback pockets	•	•	•
Dual-zone automatic climate control with air-filtration system	•	•	•
Display Audio System <sup>3</sup> with Honda Satellite-Linked Navigation System™ <sup>2,7</sup> and bilingual Voice Recognition		•	•
Exterior temperature indicator	•	•	•
Front and rear beverage holders	•	•	•
Front door pockets	•	•	•
HandsFreeLink™-bilingual Bluetooth® wireless mobile phone interface <sup>2,4</sup> with steering wheel-mounted controls	•	•	•
HomeLink® remote system <sup>6</sup>		•	•
Map lights	•	•	•
Multi-angle rearview camera <sup>2</sup> with dynamic guidelines	•	•	•
One-touch turn signals	•	•	•
Power door locks	•	•	•
Power windows with auto-up/down driver's and front passenger's windows	•	•	•
Proximity key entry and pushbutton start	•	•	•
Remote engine starter	CVT model	CVT model	AT model
Maintenance Minder™ system	•	•	•
Security system	•	•	•
Immobilizer theft-deterrent system	•	•	•
Steering wheel-mounted cruise control	•	•	•
Sunglasses holder	•	•	•
Wireless charging		•	•
Tilt and telescopic steering column	•	•	•

SEATING & TRIM	EX	TOURING	TOURING V6
Driver's seat position memory		•	•
Driver's seat with 10-way power adjustment including power lumbar support	•	•	•
Floor mats	•	•	•
Fold-down rear seatback with lock	•	•	•
Front passenger's seat with 4-way manual adjustment	•	•	•
Heated front seats	•	•	•
Perforated leather-trimmed seating surfaces		•	•
Leather-wrapped steering wheel		•	•

ENTERTAINMENT	EX	TOURING	TOURING V6
i-MID (intelligent Multi-Information Display)	•	•	•
360-watt AM/FM/CD Premium audio system with MP3/Windows Media® Audio playback capability and 7 speakers including subwoofer	•	•	•
Apple CarPlay™ <sup>2,4</sup> / Android Auto™ <sup>2,4</sup>	•	•	•
Bluetooth® Streaming Audio <sup>2,4</sup>	•	•	•
Display Audio System <sup>3</sup> with HondaLink™ <sup>2,4</sup>	•	Including Navigation <sup>2,7</sup>	Including Navigation <sup>2,7</sup>
HD Radio™ <sup>8</sup>		•	•
Siri Eyes Free compatibility <sup>2,4</sup>	•	•	•
Illuminated steering wheel-mounted audio controls	•	•	•
USB device connector <sup>4</sup>	2	2	2
SMS text message <sup>2,4</sup> / E-mail function <sup>2,4</sup>	•	•	•
SiriusXM™ <sup>9</sup>	•	•	•
Wi-Fi tethering <sup>4</sup>	•	•	•

## Coupe

FUEL ECONOMY <sup>10</sup> (L/100 KM)	EX	TOURING	TOURING V6
Automatic transmission (City/Hwy/Combined)			11.4/7.4/9.6
Manual transmission (City/Hwy/Combined)	10.4/7.4/9.0	10.4/7.4/9.0	12.9/8.4/10.9
Continuously variable transmission (City/Hwy/Combined)	9.2/6.9/8.2	9.2/6.9/8.2	

DIMENSIONS	EX	TOURING	TOURING V6
Cargo volume (L)	379	379	379
Curb weight – MT/CVT (L4) AT (V6) (kg)	1494/1525/ 1528 (Honda Sensing™ model )	1497/1531	1559/1619
Fuel tank capacity (L)	65	65	65
Ground clearance – no-load/full-load (mm)	146/110	146/110	141/110
Headroom – front/rear (mm)	944/944	944/944	944/944
Height (mm)	1436	1436	1436
Hip room – front/rear (mm)	1406/1423	1406/1423	1406/1423
Legroom – front/rear (mm)	1073/855	1073/855	1073/855
Length (mm)	4832	4832	4832
Passenger volume (L)	2636	2636	2636
Shoulder room – front/rear (mm)	1497/1400	1497/1400	1497/1400
Track – front/rear (mm)	1584/1593	1584/1593	1584/1593
Turning radius (m) (Curb-to-Curb)	5.95	5.95	5.95
Wheelbase (mm)	2725	2725	2725
Width (mm)	1854	1854	1854
Width – including mirrors/mirrors folded (mm)	2085/1859	2085/1859	2085/1859

- Horsepower and torque calculations reflect SAE net, Rev. 08/04, SAE J1349 procedures.
- None of the features we describe are intended to replace the driver's responsibility to exercise due care while driving. Drivers should not use handheld devices or operate certain vehicle features unless it is safe and legal to do so. Some features have technological limitations. For additional feature information, limitations and restrictions, please visit [www.honda.ca/disclaimers](http://www.honda.ca/disclaimers) and refer to the vehicle's Owner's Manual.
- For optimal tire wear and performance, the pressure should be checked regularly with a tire gauge. Do not rely solely on the monitor system.
- Only compatible with certain devices and operating systems. Cellular data and/or voice charges may apply, including roaming charges and/or other amounts charged by your wireless carrier.
- Operation requires wireless mobile phone to be paired with the vehicle. Operation is dependent upon cellular data and/or voice connection availability and GPS satellite signal reception.
- HomeLink® can be programmed with codes of up to three remote-control devices (e.g., garage-door opener, home security system, etc.).
- Map database covers major metropolitan areas in Canada and 48 contiguous U.S. states.
- Coverage varies by market.
- Only available in certain areas. Includes a no-charge trial of three months.
- Estimated fuel consumption based on Government of Canada's 5-cycle testing method. Your actual fuel consumption will vary based on driving habits and other factors – use for comparison only. For more information on 5-cycle testing, visit <http://vehicles.nrcan.gc.ca>.



# Sedan Trims

#### ACCORD LX SEDAN

KEY FEATURES:

- 185-hp<sup>1</sup>, 2.4-litre, 16-valve, Direct Injection DOHC, i-VTEC<sup>®</sup> 4-cylinder engine
- 160-watt AM/FM/CD audio system with MP3/Windows Media<sup>®</sup> Audio playback capability and 6 speakers
- 17" aluminum-alloy wheels
- 4-wheel Anti-lock Braking System<sup>2</sup> (ABS)
- 6-speed manual transmission (MT)
- 60/40 split fold-down rear seatback
- Active Noise Cancellation (ANC)
- Apple CarPlay<sup>™2,3</sup> / Android Auto<sup>™2,3</sup>
- Available continuously variable transmission (CVT)
- Bluetooth<sup>®</sup> Streaming Audio<sup>2,3</sup>
- Body-coloured heated power door mirrors
- Display Audio System<sup>2</sup> with HondaLink<sup>™2,3</sup>
- Driver’s seat with 10-way power adjustment including power lumbar support
- Dual-stage, multiple-threshold front airbags (SRS)
- Dual-zone automatic climate control with air-filtration system
- Eco Assist<sup>™</sup> system/ECON mode button
- Electronic Brake-force Distribution (EBD)
- Front passenger’s seat with 4-way manual adjustment
- HandsFreeLink<sup>™</sup>-bilingual Bluetooth<sup>®</sup> wireless mobile phone interface<sup>2,3</sup> with steering wheel-mounted controls
- Heated front seats
- i-MID (intelligent Multi-Information Display)
- LED daytime running lights
- LED taillights
- MacPherson strut front suspension
- Multi-angle rearview camera<sup>2</sup> with dynamic guidelines
- Multi-link independent rear suspension
- Projector-beam halogen headlights with auto-on/off
- Remote entry system
- Security system
- Side curtain airbags with rollover sensor system
- Siri Eyes Free compatibility<sup>2,3</sup>
- Smartvent<sup>™</sup> side airbags
- Tilt and telescopic steering column
- Tire Pressure Monitoring System<sup>4</sup> (TPMS) – indirect
- USB device connectors<sup>3</sup> (2)
- Vehicle Stability Assist<sup>2</sup> (VSA<sup>®</sup>) with Traction Control
- Wi-Fi tethering<sup>2</sup>

#### ACCORD SE SEDAN

- ADDS TO OR REPLACES LX FEATURES:
- Continuously variable transmission (CVT)
  - Chrome door handles
  - Leather shift knob
  - Leather-wrapped steering wheel
  - LED fog lights
  - Mirror-integrated LED turn signal indicators
  - Proximity key entry and pushbutton start
  - Rear deck lid spoiler
  - Remote engine starter
  - Honda Sensing<sup>™</sup> Technologies

#### ACCORD SPORT SEDAN

ADDS TO OR REPLACES SE FEATURES:

- 189-hp<sup>1</sup>, 2.4-litre, 16-valve, Direct Injection DOHC, i-VTEC<sup>®</sup> 4-cylinder engine
- Available continuously variable transmission (CVT)
- Available steering wheel-mounted paddle shifters (with CVT, on Sport only)
- 19" aluminum-alloy wheels
- 360-watt AM/FM/CD Premium audio system with MP3/Windows Media<sup>®</sup> Audio playback capability and 7 speakers including subwoofer
- Body-coloured side sill garnish
- Dual exhaust with chrome finishers
- Honda LaneWatch<sup>™</sup> blind spot display<sup>2</sup>
- Leather/fabric combi seating surfaces
- One-touch power moonroof with tilt feature
- Remote engine starter (CVT model)
- Available Honda Sensing<sup>™</sup> Technologies (CVT model)

#### ACCORD EX-L SEDAN

ADDS TO OR REPLACES SPORT FEATURES:

- 185-hp<sup>1</sup>, 2.4-litre, 16-valve, Direct Injection DOHC, i-VTEC<sup>®</sup> 4-cylinder engine
- Continuously variable transmission (CVT)
- 17" aluminum-alloy wheels
- Auto-dimming rearview mirror
- Driver’s seat position memory
- Front passenger’s seat with 4-way power adjustment
- Heated rear seats
- Perforated leather-trimmed seating surfaces
- Rear console ventilation
- SiriusXM<sup>™5</sup>
- Honda Sensing<sup>™</sup> Technologies

#### ACCORD TOURING SEDAN

ADDS TO OR REPLACES EX-L FEATURES:

- 19" aluminum-alloy wheels
- Auto high beam
- Body-coloured front and rear parking sensors
- Body-coloured side sill garnish
- Display Audio System<sup>2</sup> with Honda Satellite-Linked Navigation System<sup>™2,6</sup> and bilingual Voice Recognition
- HD Radio<sup>™7</sup> ready
- HomeLink<sup>®</sup> remote system<sup>8</sup>
- LED headlights with auto-on/off
- Rain-sensing windshield wipers
- Rear deck lid spoiler
- Wireless charging

#### ACCORD EX-L V6 SEDAN

ADDS TO OR REPLACES EX-L FEATURES:

- 278-hp<sup>1</sup>, 3.5-litre, 24-valve, SOHC, i-VTEC<sup>®</sup> V6 engine
- 6-speed automatic transmission (AT) with Grade Logic Control
- Dual exhaust with chrome finishers

#### ACCORD TOURING V6 SEDAN

ADDS TO OR REPLACES EX-L V6 FEATURES:

- 19" aluminum-alloy wheels
- Auto high beam
- Body-coloured front and rear parking sensors
- Display Audio System<sup>2</sup> with Honda Satellite-Linked Navigation System<sup>™2,6</sup> and bilingual Voice Recognition
- HD Radio<sup>™7</sup> ready
- HomeLink<sup>®</sup> remote system<sup>8</sup>
- LED headlights with auto-on/off
- Rain-sensing windshield wipers
- Rear deck lid spoiler
- Wireless charging

#### ACCORD HYBRID SEDAN

KEY FEATURES:

- 2.0-litre, 16-valve, Atkinson cycle DOHC, i-VTEC<sup>®</sup> 4-cylinder engine
- 360-watt AM/FM/CD Premium audio system with MP3/Windows Media<sup>®</sup> Audio playback capability and 7 speakers including subwoofer
- Chrome door handles
- Chrome grille
- Deceleration selector
- Display Audio System<sup>2</sup> with HondaLink<sup>™2,3</sup>
- Dual-zone automatic climate control with air-filtration system
- E-Continuously Variable Transmission (E-CVT)
- EV and Sport Drive Button
- Heated front seats
- Honda LaneWatch<sup>™</sup> blind spot display<sup>2</sup>
- Leather-wrapped steering wheel
- LED daytime running lights
- LED fog lights
- Mirror-integrated LED turn signal indicators
- Multi-angle rearview camera<sup>2</sup> with dynamic guidelines
- Proximity key entry and pushbutton start
- Remote engine starter
- Three-mode drive system (EV, Hybrid, Engine)
- Honda Sensing<sup>™</sup> Technologies

#### ACCORD HYBRID TOURING SEDAN

ADDS TO OR REPLACES HYBRID FEATURES:

- Auto high beam
- Auto-dimming rearview mirror
- Body-coloured front and rear parking sensors
- Body-coloured side sill garnish
- Display Audio System<sup>2</sup> with Honda Satellite-Linked Navigation System<sup>™2,6</sup> and bilingual Voice Recognition
- Driver’s seat position memory
- Front passenger’s seat with 4-way power adjustment
- Heated rear seats
- HomeLink<sup>®</sup> remote system<sup>8</sup>
- One-touch power moonroof with tilt feature
- Perforated leather-trimmed seating surfaces
- Rain-sensing windshield wipers
- SiriusXM<sup>™5</sup>
- Wireless charging

#### HONDA SENSING<sup>™</sup> TECHNOLOGIES

AVAILABLE ON SPORT (CVT), STANDARD ON SE, EX-L, EX-L V6, TOURING, TOURING V6, HYBRID AND HYBRID TOURING

- Forward Collision Warning (FCW) system<sup>2</sup>
- Collision Mitigation Braking System<sup>™</sup> (CMBS<sup>®</sup>)<sup>2</sup>
- Lane Departure Warning (LDW) system<sup>2</sup>
- Lane Keeping Assist System (LKAS)<sup>2</sup>
- Road Departure Mitigation (RDM) system<sup>2</sup>
- Adaptive Cruise Control (ACC)<sup>3</sup>

# Coupe Trims

#### ACCORD EX COUPE

KEY FEATURES:

- 185-hp<sup>1</sup>, 2.4-litre, 16-valve, Direct Injection DOHC, i-VTEC<sup>®</sup> 4-cylinder engine
- 18" aluminum-alloy wheels
- 360-watt AM/FM/CD Premium audio system with MP3/Windows Media<sup>®</sup> Audio playback capability and 7 speakers including subwoofer
- 4-wheel Anti-lock Braking System<sup>2</sup> (ABS)
- 6-speed manual transmission (MT)
- Active Noise Cancellation (ANC)
- Apple CarPlay<sup>™2,3</sup> / Android Auto<sup>™2,3</sup>
- Available continuously variable transmission (CVT)
- Bluetooth<sup>®</sup> Streaming Audio<sup>2,3</sup>
- Body-coloured heated power door mirrors
- Brake Assist
- Chrome door handles
- Display Audio System<sup>2</sup> with HondaLink<sup>™2,3</sup>
- Driver’s seat with 10-way power adjustment including power lumbar support
- Dual-stage, multiple-threshold front airbags (SRS)
- Dual-zone automatic climate control with air-filtration system
- Eco Assist<sup>™</sup> system
- Electric power-assisted rack-and-pinion steering (EPS)
- Electronic Brake-force Distribution (EBD)
- Front passenger’s seat with 4-way manual adjustment
- HandsFreeLink<sup>™</sup>-bilingual Bluetooth<sup>®</sup> wireless mobile phone interface<sup>2,3</sup> with steering wheel-mounted controls
- Heated front seats
- Honda LaneWatch<sup>™</sup> blind spot display<sup>2</sup>
- i-MID (intelligent Multi-Information Display)
- Illuminated steering wheel-mounted audio controls
- LED daytime running lights
- LED fog lights
- LED taillights
- MacPherson strut front suspension
- Multi-angle rearview camera<sup>2</sup> with dynamic guidelines
- Multi-link independent rear suspension
- One-touch power moonroof with tilt feature
- Power windows with auto-up/down driver’s and front passenger’s windows
- Power-assisted, ventilated front/solid rear disc brakes
- Projector-beam halogen headlights with auto-on/off
- Proximity key entry system and pushbutton start
- Rear deck lid spoiler
- Security system
- Side curtain airbags with rollover sensor system
- Siri Eyes Free compatibility<sup>2,3</sup>
- SiriusXM<sup>™4</sup>
- Smartvent<sup>™</sup> side airbags
- SMS text message<sup>2,3</sup> / E-mail function<sup>2,3</sup>
- Steering wheel-mounted paddle shifters (CVT)
- Tilt and telescopic steering column
- Tire Pressure Monitoring System<sup>5</sup> (TPMS)
- USB device connector<sup>3</sup> (2)
- Vehicle Stability Assist<sup>2</sup> (VSA<sup>®</sup>) with Traction Control
- Wi-Fi tethering<sup>3</sup>
- Available Honda Sensing<sup>™</sup> Technologies (CVT model)

#### ACCORD TOURING COUPE

ADDS TO OR REPLACES EX FEATURES:

- 19" aluminum-alloy wheels
- Auto high beam
- Auto-dimming rearview mirror
- Body-coloured front and rear parking sensors
- Display Audio System<sup>2</sup> with Honda Satellite-Linked Navigation System<sup>™2,6</sup> and bilingual Voice Recognition
- Driver’s seat position memory
- HD Radio<sup>™7</sup>
- HomeLink<sup>®</sup> remote system<sup>8</sup>
- Leather-wrapped steering wheel
- LED headlights with auto-on/off
- Perforated leather-trimmed seating surfaces
- Rain-sensing windshield wipers
- Wireless charging
- Honda Sensing<sup>™</sup> Technologies (CVT model)

#### ACCORD TOURING V6 COUPE

ADDS TO OR REPLACES TOURING FEATURES:

- 278-hp<sup>1</sup>, 3.5-litre, 24-valve, SOHC, i-VTEC<sup>®</sup> V6 engine
- Available 6-speed automatic transmission (AT) with Grade Logic Control
- Dual exhaust with chrome finishers
- Variable Cylinder Management<sup>®</sup> (VCM<sup>®</sup>) (AT model)
- Honda Sensing<sup>™</sup> Technologies (AT model)

#### HONDA SENSING<sup>™</sup> TECHNOLOGIES

AVAILABLE ON EX (CVT), STANDARD ON TOURING (CVT) AND TOURING V6 (AT)

- Forward Collision Warning (FCW) system<sup>2</sup>
- Collision Mitigation Braking System<sup>™</sup> (CMBS<sup>®</sup>)<sup>2</sup>
- Lane Departure Warning (LDW) system<sup>2</sup>
- Lane Keeping Assist System (LKAS)<sup>2</sup>
- Road Departure Mitigation (RDM) system<sup>2</sup>
- Adaptive Cruise Control (ACC)<sup>2</sup>

<sup>[1]</sup> Horsepower and torque calculations reflect SAE net, Rev. 08/04, SAE J1349 procedures

<sup>[2]</sup> None of the features we describe are intended to replace the driver's responsibility to exercise due care while driving. Drivers should not use handheld devices or operate certain vehicle features unless it is safe and legal to do so. Some features have technological limitations. For additional feature information, limitations and restrictions, please visit www.honda.ca/disclaimers or refer to the vehicle's Owner's Manual.

<sup>[3]</sup> Only compatible with certain devices and operating systems. Cellular data and/or voice charges may apply, including roaming charges and/or other amounts charged by your wireless carrier.

<sup>[4]</sup> For optimal tire wear and performance, tire pressure should be checked regularly with a gauge. Do not rely solely on the monitor system.

<sup>[5]</sup> Only available in certain areas. Includes a no-charge trial of three months.

<sup>[6]</sup> Map database covers major metropolitan areas in Canada and 48 contiguous U.S. states.

<sup>[7]</sup> Coverage varies by market.

<sup>[8]</sup> HomeLink® can be programmed with codes of up to three remote-control devices (e.g., garage-door opener, home security system, etc.)

<sup>[1]</sup> Horsepower and torque calculations reflect SAE net, Rev. 08/04, SAE J1349 procedures.

<sup>[2]</sup> None of the features we describe are intended to replace the driver's responsibility to exercise due care while driving. Drivers should not use handheld devices or operate certain vehicle features unless it is safe and legal to do so. Some features have technological limitations. For additional feature information, limitations and restrictions, please visit www.honda.ca/disclaimers or refer to the vehicle's Owner's Manual.

<sup>[3]</sup> Only compatible with certain devices and operating systems. Cellular data and/or voice charges may apply, including roaming charges and/or other amounts charged by your wireless carrier.

<sup>[4]</sup> Only available in certain areas. Includes a no-charge trial of three months.

<sup>[5]</sup> For optimal tire wear and performance, tire pressure should be checked regularly with a gauge. Do not rely solely on the monitor system.

<sup>[6]</sup> Map database covers major metropolitan areas in Canada and 48 contiguous U.S. states.

<sup>[7]</sup> Coverage varies by market.

<sup>[8]</sup> HomeLink® can be programmed with codes of up to three remote-control devices (e.g., garage-door opener, home security system, etc.)



# Sedan Exterior & Interior Colours

ACCORD SEDAN	LX	SE	SPORT	EX-L	TOURING	EX-L V6	TOURING V6	HYBRID	HYBRID TOURING
White Orchid Pearl	Grey Fabric	Grey Fabric	Black Combi (Leather/Fabric)	Black Leather	Black Leather	Black Leather	Black Leather	Ivory Fabric	Ivory Leather
Crystal Black Pearl	Grey Fabric	Grey Fabric	Black Combi (Leather/Fabric)	Black Leather	Black Leather	Black Leather	Black Leather	Black Fabric	Black Leather
Modern Steel Metallic			Black Combi (Leather/Fabric)	Black Leather	Black Leather	Black Leather	Black Leather	Black Fabric	Black Leather
Obsidian Blue Pearl			Black Combi* (Leather/Fabric)	Grey Leather	Grey Leather	Grey Leather	Grey Leather		
Lunar Silver Metallic	Grey Fabric	Grey Fabric	Black Combi* (Leather/Fabric)						
Basque Red Pearl II					Black Leather		Black Leather		
San Marino Red			Black Combi (Leather/Fabric)						
Vortex Blue Pearl									Black Leather

\*CVT only.

# Coupe Exterior & Interior Colours

ACCORD COUPE	EX	TOURING	TOURING V6
White Orchid Pearl	Black Fabric	Black Leather	Black Leather
Crystal Black Pearl	Black Fabric	Black Leather	Black Leather
Modern Steel Metallic	Black Fabric**	Black Leather	Black Leather
San Marino Red	Black Fabric	Black Leather	Black Leather
Still Night Pearl		Ivory Leather**	Ivory Leather*

\*AT only.  
\*\*CVT only.